

THE STAGE

POWERFUL.
PROVOCATIVE.
PROFOUND.

WEST COAST PREMIERE



WRITTEN BY
VICHET CHUM

DIRECTED BY
JEFFREY LO

SEPT 13 – OCT 8, 2023

FROM THE ARTISTIC DIRECTOR

Welcome to our 41st season, which we are absolutely thrilled to kick off with the West Coast premiere of the compelling family saga **Bald Sisters** by the rising new playwright Vichet Chum.

Looking ahead to the holiday season, get ready for the long-anticipated laugh-a-minute farce **The Play That Goes Wrong** by the comedic team of Henry Lewis, Jonathan Sayer, and Henry Shields. In January, we'll take you to the Highlander Folk School in the mid-1950s for a thought-provoking



journey with the West Coast premiere of **People Where They Are** by Bay Area playwright Anthony Clarvoe, followed by the multi-award-winning comedy **Hangmen** by the brilliant Martin McDonagh. Finally, our 41st season will conclude with the eagerly-awaited return of our summer musical extravaganza, which is always worth the wait!

We are incredibly proud to present the West Coast premiere of **Bald Sisters**. This extraordinary story took shape at the renowned Steppenwolf Theatre in Chicago, where it made its world premiere during an extended run in early 2023. Vichet Chum has created a deeply resonant work seamlessly aligned with our mission to explore the profound power of human connection, the liberating embrace of our individual stories, and the joyous celebration of our shared human journey.

As you will see, those elements are artfully highlighted and aligned in the very capable hands of our director extraordinaire, Jeffrey Lo, and the stellar cast and creative team he leads. Their passion, dedication, and artistic brilliance are the heart and soul of this production.

As we wove into the season, the talented team at The Stage will bring to life another bold and diverse set of voices that resonate with heart, humor, and even some hard truths. These plays are more than just entertainment. They are a testament to the unbreakable bonds that hold us together in a world often bent on tearing us apart. They explore the transformative power of connection and compassion.

Propelled by a four-decade legacy of courageous, innovative, and unwavering artistic risk-taking, this season will again deliver the kind of thought-provoking, powerful, and profound theatrical experiences that audiences in San Jose and across the Bay Area have come to expect from The Stage. We remain committed to showcasing the best of Bay Area artists and we sincerely thank you for joining us for these truly remarkable productions.

As ever, we extend our heartfelt gratitude to each and every one of our subscribers, patrons, and funders for your unwavering support of The Stage. In a time when theatres across the globe are struggling to recover from the impacts of the pandemic, The Stage remains a vital cornerstone of our community, strengthening the bonds that lift us all higher.

We hope you thoroughly enjoy the season ahead! Your nurturing presence and unfettered enthusiasm mean the world to us.

អរគុណច្រើន (âkun chraen)

Randall King
Artistic Director

SAN JOSE STAGE COMPANY and associate producer KATHLEEN COHEN

present the West Coast premiere of

BALD SISTERS

by Vichet Chum

Keiko Carreiro*

Rinabeth Apostol*

Nicole Tung*

Zaya Kolia*

Will Springhorn Jr.*

Scenic Designer

Christopher
Fitzer

Costume Designer

Becky
Bodurtha^

Lighting Designer

Maurice
Vercoutere

Sound Designer

Steve
Schoenbeck

Video Designer

Spenser
Matubang

Wig Maker

Sharon Ridge
Jessica Carter

Props Coordinator

Jenn
Trampenau

Dialect, Language, and Cultural Consultant

Patrick
Chew

Intimacy Coordinator

Will
Springhorn Jr.

Stage Manager

Alexa
Burn*

Directed by
Jeffrey Lo°

* Member of Actors' Equity Association. This theater operates under an agreement with Actors' Equity Association, the Union of Professional Actors and Stage Managers in the United States.



° The director is a member of the Stage Directors and Choreographers Society, a national theatrical labor union.



^ Member of United Scenic Artists, Local USA 829 of the International Alliance of Theatrical Stage Employees.



Bald Sisters was developed by Steppenwolf Theatre Company as part of its new play development initiative, SCOUT. Anna D. Shapiro, Artistic Director and David Schmitz, Executive Director.

The world premiere of **Bald Sisters** was produced at Steppenwolf Theatre Company, Chicago, IL. Glenn Davis and Audrey Francis, Artistic Directors, and E. Brooke Flanagan, Executive Director.

PLACE: Carrollton, Texas. TIME: Spring of 2017, backwards and forwards.

The performance lasts one hour and thirty-five minutes. There is no intermission.

THE STAGE

SAN JOSE STAGE COMPANY, 490 South 1st Street, San Jose, CA, 95113

www.thestage.org • 408.283.7142 • boxoffice@thestage.org

Please note the location of all exits.

Please check to see that all electronic and mobile devices are turned off during the performance. The use of cameras or any recording equipment in the theater is strictly forbidden. For your safety and the safety of our performers, do not step onto the set or stage nor touch any props or set pieces.

PRODUCTION TEAM

Technical Advisor	Robert Pickering
Lead Scenic Artist	Bill Vujevich
Scenic Builders.....	Bennett Seymour Corinne Seymour
Scenic Artist.....	Jenn Kirchner
Master Electrician	Aaron Gin
Electricians	Zach Bridges Chiana Neidbalec Marisa Whitmore Sofia Williams
Production Assistants.....	Cheyenne Bacon Chiana Niedbalec Steph Puentes
Stage Management Intern.....	Haley Baugher
Special Thanks	Kyra Hubis Candace Lambrecht City Lights Theater Company San José State University TheatreWorks Silicon Valley

COMMUNITY PARTNERS

Academic Coffee • Contemporary Asian Theater Scene • Mosaic





Rinabeth Apostol



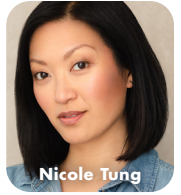
Keiko Carreiro



Zaya Kolia



Will Springhorn Jr.



Nicole Tung

ARTIST BIOGRAPHIES

CAST

Rinabeth Apostol*

Sophea

Rinabeth returns to The Stage long after playing Christmas Eve in **Avenue Q**. Onstage credits include American Conservatory Theater, Actors Theatre of Louisville, Seattle Repertory Theatre, TheatreWorks Silicon Valley, California Shakespeare Theater, Magic Theatre, Arizona Theatre Company, East West Players, and The Ground Floor at Berkeley Rep. Post pandemic credits include **Hamlet** (Marin Shakespeare Company), **South Pacific** (Billings Symphony), **The Chinese Lady** and **Smart People** (Capital Stage), **Fun Home** (42nd Street Moon), the world premieres of **Red Winged Blackbird** and **Monument** (Magic Theatre), **Magic Lamp** (Presidio Theatre), and **Starting Here, Starting Now** (San Francisco Playhouse). Offstage, hear her as Gretchen Campbell on **Marvel's Squirrel Girl: The Unbeatable Radio Show!** podcast series (SiriusXM). Rinabeth is a proud member of Actors' Equity Association and SAG-AFTRA.
 @rbdtwo | www.rinabeth.com

Keiko Carreiro*

Ma

Keiko is a collective member with the Tony Award-winning San Francisco Mime Troupe. Since 1987, she has been an actor, designer, co-writer, and director with the company and has performed in almost every summer production. Keiko most recently performed in the West Coast premiere of **The Headlands** by Christopher Chen and Swing and understudy for Glinda and Aunt Em in **The Wizard of Oz** at American Conservatory Theater. She has performed at Berkeley Repertory Theatre, American Conservatory Theater, Magic Theatre, Aurora Theatre Company, Word for Word Performing Arts Company, Oakland Theater Project, and Center REpertory Company. In 2020 Keiko co-founded Kunoichi Productions ("kunoichi"

translates as "female ninja"), an innovative, multidisciplinary theatre company.

Zaya Kolia*

Seth, Seif

Zaya is an Assyrian Bay Area native. He earned a BFA in acting from the Academy of Art University where his credits include Flan in **Six Degrees of Separation**, Joshua and Martin in **Cloud Nine**, Barnett in **Crimes of the Heart**, Aldolpho in **The Drowsy Chaperone**, and Kevin Rosario in **In the Heights**. Other credits include Frank Jr. in **Saturday Night Fever** (Broadway by the Bay), **The Wizard of Oz** (Berkeley Playhouse), Khadim in **The North Pool** (Bread & Butter Theatre), The Captain in **Anything Goes** (Hillbarn Theatre), Ludovic and Augenti in **Passion** and Harry and Martin in **Cloud Nine** (Custom Made Theatre Co.), Azad in **On the Periphery** (Golden Thread Productions and Crowded Fire Theater), **Tiny Beautiful Things** (Los Altos Stage Company), and Sky Masterson in **Guys and Dolls** (Peninsula Ballet Theatre). Zaya now resides in Los Angeles where he performed in the Hollywood Fringe Festival and a tour of **Romeo and Juliet**. He recently originated the role of Danial in the world premiere of **The Language of Wild Berries** (Golden Thread Productions) and understudied the role of Omid in the West Coast premiere of **English** at Berkeley Repertory Theatre. Zaya is very excited to return to the Bay Area and reunite with director Jeffrey Lo!

Will Springhorn Jr.*

Nate

Will earned an MFA from Mountview Theatre School in London and a BA from the University of Minnesota. Favorite roles include Melvin and Toxie in **The Toxic Avenger** (San Jose Stage Company), Andy in **An Entomologist's Love Story** (San Francisco Playhouse), and Edmund in **King Lear** (San Francisco Shakespeare Festival). He is an artistic associate at The Stage, where he

originated the roles of Captain Wentworth in the world premiere of **Persuasion** and Maximilian in the world premiere of **Adiós Mamá Carlota**. Additional credits here include Kent in **reasons to be pretty**, Noah in **The Rainmaker**, Ralph in **Reefer Madness**, Tiger Brown in **The Threepenny Opera**, Buck in **Bonnie & Clyde**, Eddie and Dr. Scott in **The Rocky Horror Show**, Will in **Every Christmas Story Ever Told**, Tom and Tom Jr. in **Reckless**, Ernst in **Cabaret**, George Bailey in **It's a Wonderful Life: A Radio Play**, Harold in **Death of a Salesman**, Lurch in the musical **The Addams Family**, Brother Man in **Cat on a Hot Tin Roof**, and Calhoun in **Bloody Bloody Andrew Jackson**. Will has worked locally with TheatreWorks Silicon Valley, San Francisco Playhouse, Center REPeritory Company, 42nd Street Moon, the San Francisco Shakespeare Festival, Pacific Repertory Theatre, B Street Theatre, Magic Theatre, Woodminster Summer Musicals, Berkeley Repertory Theatre, and Theatre Rhinoceros. He teaches theatre at Diablo Valley College and West Valley College and is a proud member of Actors' Equity Association. www.willspringhornjr.com

Nicole Tung*

Him

Nicole (she, her) is thrilled to make her San Jose Stage Company debut. Recent credits include Xi Yan in **Chinglish** (San Francisco Playhouse) and the roles of Thuy, Mui, and Danielle in the world premiere of **Colonialism is Terrible, But Pho is Delicious** (Aurora Theatre Company, San Francisco Bay Area Theatre Critics Circle nomination). Other credits include work with TheatreWorks Silicon Valley, 42nd Street Moon, Magic Theatre, Theatre on San Pedro Square, Sunnyvale Community Players, Foothill Music Theatre, American Musical Theatre of San Jose, Palo Alto Players, South Bay Musical Theatre, San Jose Repertory Theatre, South Valley Civic Theatre, StirFry Theatre, Hillbarn Theatre, and Woodminster Summer Musicals. She is currently co-director and co-choreographer for **Rent** at South Bay Musical Theatre. "Favorite roles: wife and mama opposite husband, Jason, and daughter, Kalana." [@nicole_tung](https://twitter.com/nicole_tung)

CREATIVE TEAM

Jeffrey Lo°

Director

Jeffrey Lo (he, him, his) is thrilled to be back at The Stage after directing **Between Riverside**

and Crazy and **The Great Leap**. He is a Filipino-American playwright and director based in the Bay Area. He is the recipient of the Leigh Weimers Emerging Artist Award, the Emerging Artist Laureate by Arts Council Silicon Valley, and the Theatre Bay Area Director TITAN Award. Selected directing credits include **The Language Archive**, **Little Shop of Horrors**, and **The Santaland Diaries** (TheatreWorks Silicon Valley), **The Paper Dreams of Harry Chin** and **Hold These Truths** (San Francisco Playhouse), **Vietgone** and **The Great Leap** (Capital Stage), **A Doll's House, Part 2** and **Eurydice** (Palo Alto Players, TBA Award finalist for direction), and **The Grapes of Wrath**, **The Crucible**, and **Yellow Face** (Los Altos Stage Company). As a playwright, his plays have been produced and workshoped at Berkeley Repertory Theatre, TheatreWorks Silicon Valley, Bindlestiff Studio, City Lights Theater Company, and Stanford University. His play **Writing Fragments Home** was a finalist for the Bay Area Playwrights Conference and a semi-finalist for the Eugene O'Neill Theater Center National Playwrights Conference. Jeffrey has also worked with the Oregon Shakespeare Festival, the Asian American International Film Festival, San Jose Repertory Theatre, Ferocious Lotus Theatre Company (company member), and PlayGround (company member). His short play **Brendan's Damn Good Day** was adapted to a short film which was selected for the Manchester Lift-Off Film Festival and the Black Cat Award International Film Festival in Bolivia. Jeffrey also works as an educator and advocate for issues of Equity, Diversity, and Inclusion and has served as a grant panelist for the Zellerbach Family Foundation, SV Creates, and Theatre Bay Area. He is the director of community partnerships and casting director at the Tony Award-winning TheatreWorks Silicon Valley, a graduate of the Multicultural Arts Leadership Institute, and a proud alumnus of the drama department at the University of California, Irvine.

Becky Bodurtha^

Costume Designer

Becky is a costume designer and educator in the Bay Area. Recent credits include **Chinglish** (San Francisco Playhouse), **Red Bike** (Center REPeritory Company), **Drowning in Cairo** (Potrero Stage), **Felix Starro** (Ma-Yi Theatre Company), **Open** (The Tank NYC), and **One Thousand Nights and One Day** (Prospect Theater Company). Other credits

include **Constellations** (Wilma Theater), **The Stranger** (Forth Street Theatre), **Passover** (Cherry Lane Theatre), **The Wong Kids in the Secret of the Space Chupacabra**, **Among the Dead**, and **Go!** (Ma-Yi Theatre Company), and **This Lingering Life** (HERE Arts Center). International credits include **Anna in the Tropics** (Repertory Philippines), **Movement for Humanity** and **Africa's Hope** (Ubumuntu Arts Festival, Rwanda). She is currently a senior lecturer of design at Stanford University and earned an MFA at the University of Iowa.
www.beckybodurtha.com

Alexa Burn* **Stage Manager**

Alexa is stage managing her first production at San Jose Stage Company! Previous stage manager credits include **The Code** (American Conservatory Theater) and **Chess** and **A Little Night Music** (42nd Street Moon). Assistant stage manager credits include The New Roots Theatre Festival (San Francisco Bay Area Theatre Company), **The Three Musketeers**, **Chicken and Biscuits**, **The Great Leap**, **Grand Horizons**, and **Hood** (Asolo Repertory Theatre, Sarasota, FL), and **A Leg Up** and **Clue** (Bristol Riverside Theatre, Bristol, PA). She was also a stage manager at the Disneyland Resort for many years, working with groups including the Disneyland Band and Dapper Dans. Alexa is thrilled to join The Stage family!

Patrick Chew **Dialect, Language, and Cultural Consultant**

Patrick is delighted to be working with San Jose Stage Company for the first time. He previously coached and consulted for Masquers Playhouse, San Francisco Playhouse, Jungle Theater, American Conservatory Theater, Ten Thousand Things Theater, Palo Alto Players, Contra Costa Civic Theatre, and Jay Kuo Productions. Patrick earned degrees in linguistics and East Asian languages (Chinese, Altaic languages) from the University of California, Berkeley, and has been written up for his hyperpolygllossia by Michael Erard (author of *Babel No More*). His day job is normally in tech, focusing on internationalization and localization.

Christopher Fitzer **Scenic Designer**

Christopher is currently properties director at TheatreWorks Silicon Valley and an award-winning freelance scenic designer in the Bay Area. He previously designed **The Lieutenant**

of Inishmore, **Between Riverside and Crazy**, and **The Great Leap** for The Stage. His other design credits include productions at TheatreWorks Silicon Valley, American Conservatory Theater, San Francisco Playhouse, Aspen Opera Theater Center, World Literature Today's Puterbaugh Festival, Capital Stage, Los Altos Stage Company, Woodminster Summer Musicals, Oklahoma City Theatre Company, Flat Rock Playhouse, Hillbarn Theatre, Douglas Morrisson Theatre, Palo Alto Players, and Foothill Music Theatre. Christopher held production and artistic positions at Aspen Music Festival, Curtis Opera Theatre, and Dallas Summer Musicals. He earned a BFA in theatrical design from the University of Oklahoma.
www.christopherfitzer.com

Sharon Ridge **Wig Maker**

Sharon has enjoyed a long career styling wigs and hair for the theatre, as well as designing and teaching theatrical makeup. Her design work for regional theatre includes American Musical Theatre of San Jose, California Shakespeare Theater, Jewel Theater Company, Opera San José, San Jose Repertory Theatre, San Jose Stage Company, Santa Cruz Shakespeare, and TheatreWorks Silicon Valley. She has taught stage makeup at San José State University and mentored students in the drama department of Palo Alto High School. A member of Local 706 IATSE, Sharon has worked backstage for Ballet San Jose Silicon Valley, Mark Morris Dance Company, and several national tours. Most recently, she assisted in the hair department of the musical **Dear Evan Hansen**. Sharon earned a BA in creative arts from San José State University.

Steve Schoenbeck **Sound Designer**

Steve is the resident sound designer and sound supervisor at The Stage. He designed sound here for **Othello**, **Grand Horizons**, **Satchmo at the Waldorf**, **Sex with Strangers**, **August: Osage County**, **Great Expectations**, **Chicago**, **The Rocky Horror Show**, **Adiós Mamá Carlota**, **Cat on a Hot Tin Roof**, **Between Riverside and Crazy**, **The Lieutenant of Inishmore**, **Hedwig and the Angry Inch**, **Sweeney Todd**, **Fool for Love**, **Hand to God**, **The Memory Stick**, **Disgraced**, **Rock 'n' Roll**, **Buffalo'ed**, and **Mamma Mia!** You may have also heard his work at companies including

San Jose Repertory Theatre (resident sound designer), TheatreWorks Silicon Valley, American Conservatory Theater, Pear Theatre, San Francisco Playhouse, Marin Theatre Company, Teatro Vision, Arizona Theatre Company, Portland Center Stage, and the Edinburgh Festival Fringe Assembly Theatre. His designs have been honored with a Dean Goodman Choice Award, several San Francisco Bay Area Theatre Critics Circle nominations, and a SFBATCC award for **Great Expectations** at The Stage.

Jenn Trampenau **Props Coordinator**

Jenn is happy to be returning to The Stage where she previously coordinated props for **Othello**, **Grand Horizons**, **Meet John Doe**, **Sex with Strangers**, **August: Osage County**, and **Great Expectations**. She also worked as a production assistant on **Adiós Mamá Carlota**, **The Rocky Horror Show**, **Chicago**, **The Great Leap**, and **August: Osage County**. Jenn was the light and sound board operator on **Great Expectations** and a set constructor on **The Humans**.

Maurice Vercoutere **Lighting Designer**

Maurice returns to The Stage, where he designed the lights for the critically-acclaimed **Othello**, **Grand Horizons**, **Satchmo at the Waldorf**, **Meet John Doe**, **Sex with Strangers**, **August: Osage County**, **Great Expectations**, **Death of a Salesman**, **Disgraced**, and **Venus in Fur**, as well as the world premieres of **Buffalo'ed**, **Lolita Roadtrip**, and **Tenders in the Fog**, for which he received the Dean Goodman Choice Award for lighting. Other designs for the stage include **The Threepenny Opera**, **The Glass Menagerie**, and **Boeing-Boeing**. Maurice has designed for many theatres in the Bay Area and beyond including Sacramento Theatre Company, The Western Stage (resident designer), TheatreWorks Silicon Valley, Marin Theatre Company, Pacific Repertory Theatre, and Magic Theatre.

LEADERSHIP

Cathleen King **Executive Director**

Cathleen is the executive director of The Stage and where she has managed over 170 productions and twenty world premieres. She initiated and developed commissions, international partnerships, and co-productions

including with Electric Company Theatre in Canada, Irish Theatre Institute in Ireland, El Teatro Campesino, African-American Shakespeare Company, Capital Stage, Ice Nine (The Grateful Dead), and Roshi Productions. Cathleen secured the acquisition of our property at 490 South First Street and is helming the planning and development of a new theatre facility and company home. She was a founding member of the Coalition of Bay Area Theaters, responsible for negotiating the establishment of a collective bargaining agreement with Actors' Equity Association for mid-size theatre companies in the Bay Area region. Cathleen produced the Downtown Arts Series in partnership with the City of San Jose, serving a diverse community of artists and emerging arts organizations for over ten years. She has served on the Theatre Service Committee for Theatre Bay Area, the SoFA Leadership Committee, and recently participated as a member of the Greater Downtown San Jose Economic Recovery Task Force which leveraged additional funding for the arts in San Jose. In addition, she has served on grant panels for the City of San Jose and SVCcreates, among others, and also served as an Arts Advisory Council member for the performance venue design process for Evergreen Valley College. Cathleen established a three-year educational outreach partnership with Notre Dame High School in San Jose and has adjudicated for many local high school and college theatre programs. She is the recipient of several distinguished awards including the 2018 Cornerstone of the Arts Award from the San José Arts Commission, as well as the 2018 Paine Knickerbocker Award for Continuing Contributions to Bay Area Theatre from the San Francisco Bay Area Theatre Critics Circle.

Randall King **Artistic Director**

Randall is the artistic director and co-founder of San Jose Stage Company. Under his leadership, The Stage has produced over 160 plays and musicals and premiered over fifty new works, including eighteen world premieres. Randall is the recipient of the 2018 City of San José Cornerstone of the Arts Award for providing enduring and effective leadership that contributes to the betterment of the San José arts community. Acting credits at The Stage include Beverly Weston in **August: Osage County**, Big Daddy in **Cat on a Hot Tin Roof**, Willy Loman in the critically acclaimed **Death of a**

Salesman (San Francisco Bay Area Theatre Critics Circle award, 2015), H. C. Curry in **The Rainmaker**, Frank Hamer and the Judge in **Bonnie & Clyde** (TBA Award finalist), EKO in **The Elaborate Entrance of Chad Deity**, Mark Rothko in **Red**, Jack Lawson in **Race** (2013 Standout Contemporary Production, Silicon Valley Awards), Dodge in **Buried Child** (2012 Standout Drama Production, Silicon Valley Small Venue Theatre Awards), Johnny Friendly in **On the Waterfront**, Milan and the Waiter in **Rock 'n' Roll**, Sharky in **The Seafarer** (Top Ten in Theatre in 2009, Bay Area News Group), Ariel in **The Pillowman** (2010 Standout Dramatic Production Award by Wave magazine and Artsopolis-sponsored Silicon Valley Small Theatre Awards), and Richard Roma in **Glengarry Glen Ross**. Directing credits include a three-month extended run of **Picasso at the Lapin Agile** by Steve Martin, the world premiere of **Cumberland Blues**, the Grateful Dead musical featuring music and lyrics by Jerry Garcia and Robert Hunter that transferred to San Francisco, the Tuna trilogy (**Greater Tuna**, **A Tuna Christmas**, and **Red, White and Tuna**), **R.F.K.** (SFBATCC award), **Hand to God**, and most recently, the critically acclaimed production of **Chicago**. He has performed in leading roles at many other theatre companies, including San Jose Repertory Theatre, Berkeley Repertory Theatre, Sacramento Theatre Company, and the Alaska Theatre Festival. On screen, Randall has acted in **The Rainmaker** (directed by Francis Ford Coppola), **Mumford** (directed by Lawrence Kasdan), and **The Rock** (directed by Michael Bay). He has also performed in numerous television productions.

PRODUCTION AFFILIATIONS

Actors' Equity Association*

Actors' Equity Association (AEA) was founded in 1913 and is the US labor union that

represents more than 50,000 actors and stage managers. Equity seeks to foster the art of live theatre as an essential component of society and advances the careers of its members by negotiating wages, working conditions, and providing a wide range of benefits, including health and pension plans. Equity is a member of the AFLCIO and is affiliated with FIA, an international organization of performing arts unions. www.actorsequity.org

Stage Directors and Choreographers Society°

The Stage Directors and Choreographers Society (SDC) is the theatrical union that unites, empowers, and protects professional stage directors and choreographers throughout the United States. Its mission is to foster a national community of professional stage directors and choreographers by protecting the rights, health, and livelihoods of all our members by negotiating and enforcing employment agreements across a range of jurisdictions, facilitating the exchange of ideas, information and opportunities, and educating current and future generations about the critical role of directors and choreographers in leading the field. www.sdcweb.org

United Scenic Artists^

United Scenic Artists, Local USA 829, IATSE, is a labor union and professional association of designers, artists, craftspeople, and department coordinators, organized to protect craft standards, working conditions, and wages for the entertainment and decorative arts industries. The members of Local USA 829 work in film, theatre, opera, ballet, television, industrial shows, commercials, and exhibitions. www.usa829.org

SAN JOSE STAGE COMPANY

STAFF

Artistic Director..... Randall King
Executive Director..... Cathleen King
Associate Artistic Director..... Allison F. Rich
Production Manager.....Matt Casey
Technical Advisor &
Lead Set Construction..... Robert Pickering
Master Electrician..... Aaron Gin
PR Manager.....Jonathan White
Business & Operations
Associate..... Tor-Elias Johnson
Box Office &
Patron Manager..... Mac Williams
Patron Services Associates ... Aleisha LaCruise
Patrick Rivera
Photographer..... Dave Lepori
Playbill Production..... Third Act Services
Associate Artists.....Ashley Garlick
Kenneth Kelleher
Johnny Moreno
Giulio Cesare Perrone
Steve Schoenbeck
Will Springhorn Jr.
Halsey Varady
Maurice Vercoutere

BOARD OF DIRECTORS

President..... Jason St. Claire
Vice President..... Elizabeth Monley
Secretary..... Richard Keit
Legal Counsel..... Richard T. Hilovsky
Capital Campaign Chair.....Jerry Strangis
Members.....James T. Beall
David Chamberlain
Cathleen King
Randall King
Patricia McDonald
Michael Van Every

MISSION

Through powerful, provocative, and profound theatre, San Jose Stage Company (The Stage) seeks to expand community, forge creative partnerships, and challenge individuals in order to illuminate the human condition.

ABOUT THE STAGE

Now in its 41st season, San Jose Stage Company is recognized as the South Bay's leading professional theatre company, having earned a reputation for artistic excellence through powerful, provocative, and profound work that illuminates the human condition. The Stage is devoted to new, cutting-edge work and reinterpreting American literature and world classics using innovative stagecraft, multi-media that propels the narrative, and accomplished, local actors in true repertory style. With the farthest seat in the house no more than fifteen feet from the three-quarter thrust stage, the connection between actor and audience is profoundly visceral. Attracting more than 30,000 patrons to downtown and employing more than 150 local artists annually, San Jose Stage Company continues to be a vital force in the region's economic and creative landscape. As a strong community partner, The Stage has been the creative home for more than 500 performance groups including San Jose Jazz and Notre Dame High School, working together to engage, provoke, and inspire current and future theatre participants and arts advocates. The Stage has produced over 200 productions, including twenty world premieres and fifty new works and is ranked as the second largest professional theatre and eighth largest performance arts organization in Silicon Valley by the *Silicon Valley/San Jose Business Journal*. www.thestage.org

LAND ACKNOWLEDGMENT

The Stage respectfully acknowledges the benefits and origins of its venue. We present our productions on land stolen from the Indigenous peoples in the region of the Ohlone Tribe. Over the years we have brought Indigenous shamans from the Ohlone Tribe into the space to bless the building and ask permission to continue the "oral tradition" of storytelling. We honor and recognize that the Ohlone people are a vital part of our community today. We are grateful to live, learn, and work on their ancestral lands, and continue the tradition of oral storytelling. The Stage is always seeking to deepen our connections with the Indigenous community. Please contact us with suggestions for ways we can continue to support Indigenous people.

BOX OFFICE INFORMATION

The box office is open one hour prior to curtain for will call and walk-up ticket purchases on performance days.

Subscribers may exchange their tickets up to one business day in advance of their scheduled performance. Exchanges are made on a seat availability basis and we cannot guarantee the same assigned seats.

Special discounts are available to students, seniors over sixty, and groups of ten or more.

You can also contact boxoffice@thestage.org for subscription questions, ticketing policies, or other information about The Stage.

408.283.7142
boxoffice@thestage.org

PERFORMANCE SCHEDULE

Wednesday	7:30 PM
Thursday	7:30 PM
Friday	8:00 PM
Saturday	2:00 PM
Saturday	8:00 PM
Sunday	2:00 PM

TICKET PRICES

	CTR	LR	LR
	CTR	CTR	SIDE
Previews (Wed-Thu):	\$40	\$37	\$34
Previews (Friday):	\$43	\$40	\$37
Opening Gala (Sat):	\$74	\$69	\$64
Wednesday Evenings:	\$50	\$47	\$43
Thursday Evenings:	\$52	\$49	\$45
Friday Evenings:	\$56	\$52	\$47
Saturday Matinees:	\$56	\$52	\$47
Saturday Evenings:	\$62	\$58	\$54
Sunday Matinees:	\$56	\$52	\$47

Tickets subject to additional fees.

COVID-19 SAFETY PROTOCOLS FOR IN-PERSON PERFORMANCES

The health and safety of our artists, patrons, and staff are top priority. To continue our safe return to in-person performances at The Stage, we have updated our Covid-19 Safety Policies in accordance with guidelines provided by the State of California and Santa Clara County:

- Vaccination checks will no longer be required of patrons before entering the theater.
- Masking is strongly encouraged but no longer required for all patrons and staff while inside the theater and lobby area.
- San Jose Stage Company remains a fully vaccinated company, i.e., artists, staff, and crew are vaccinated.
- Concessions will be permitted in the theater or lobby area.
- We have upgraded our air filters and increased air flow in the theater.
- Hand sanitizer stations will be provided throughout the theater and lobby area.
- Performers will not be masked.
- Tickets will be e-tickets for touchless check-in.
- Digital playbills will be available by QR code and website link. Physical playbills can be provided upon request.
- Patrons will not be allowed to wait for performers in the lobby after the show.
- The theater, backstage, and lobby areas will be sanitized after each performance.

We are constantly monitoring State and County guidelines and these policies may change and evolve over time. We appreciate your cooperation in maintaining safety at The Stage. These policies and procedures are in place to keep our doors open for live performances. Please contact us via email at boxoffice@thestage.org if you have any questions or concerns regarding our policies.

INSTITUTIONAL SUPPORT

San Jose Stage Company gratefully acknowledges our government, foundation, and corporate partners whose support allows The Stage to present bold, diverse, and innovative new work.

GOVERNMENT PARTNERS CIRCLE

California Nonprofit Performing Arts Grant
California Venues Grant
The County of Santa Clara
City of San Jose Office of Cultural Affairs

FOUNDATIONS & VISIONARIES CIRCLE

The Applied Materials Foundation
Robert E. and Adele M. Boydston Charitable Foundation
Brandenburg Family Foundation
KLA Foundation
The David and Lucile Packard Foundation
The Richardson Family Foundation
The Rotary Club of San Jose
The Shubert Foundation
SV Creates
Swenson Foundation

CORPORATE & LEADERSHIP CIRCLE

\$50,000+

Republic Urban Properties
Swenson

\$10,000+

Urban Catalyst

\$5,000+

Boccardo Management
Core Companies
Google, Inc.

MTM Building Group
Strangis Properties

\$2,500+

Bozzuto Insurance Services
Cornerstone Earth Group
DAL Properties | Terrascape
Ventures LLC

HMH Engineers
Lincoln Properties
LPMD Architects
McCarthy Ranch

Morgan Stanley
Orange Barrel Media
San Jose Water Company
The Schoennauer Company

\$1,500+

Bank of the West
Blach Construction
Chicago Title Insurance
Company

Cox Castle Nicholson
Duran and Venables Inc.
Form4 Architecture
The Morley Bros

Republic Services, Inc.
San Jose Water Company
Valley Water

\$1,000+

SDS NexGen Partners

\$500+

Adobe

INDIVIDUAL & BUSINESS SUPPORT

LEGACY CIRCLE | \$50,000+

Marilyn Taghon

FOUNDER'S CIRCLE | \$25,000+

Robert J. Bettencourt
Ronald Whyte

DIRECTOR'S CIRCLE | \$10,000+

Mark Petersen

ASSOCIATE'S CIRCLE | \$5,000+

Greg M. Bettencourt
Peter & Barbara Dehlinger
Kyra & Hal Hubis
James Kleinrath & Melody Singleton
Dave & Elizabeth Monley
Jason St. Claire
Suzanne Wittrig & Alfonso Banuelos, MD

DESIGNER'S CIRCLE | \$2,500+

Cheryl Booton & Robert Mannell
Richard & Julie Hilovsky
Robert Leininger & Judy Rookstool
Howard Lyons
Lyle Merithew & Eileen Sandra Swirsky
James Rees
Judith Miller Siebenthal*

ACTOR'S CIRCLE | \$1,000+

Iris Berke
Sarah Clish
Kathleen Cohen
Aiko Fadness
Clayton & Sandra Feldman
Katherine Mason
Jennifer Mullins
Jeff & Elaine Neeley
Arlene Okerlund
Daniel Pappone
The Richardson Family,
In honor of Norman Gee
Jeanne Torre*
Nadejda & Mark Waite
Peter K. Wanger Jr.
Ronald & Ann Whyte

BENEFACTOR'S CIRCLE | \$500+

Russell Alongi
Mike & Jan Bergkamp
Cindy Chavez & Mike Potter
Suzanne Currie Noble
David & Liyuza Eisbach
Kaye Evleth & Robert Burns

Mary Feldman & Richard Morris
Robert & Maxine Halem
Gloria Hom
Rich & Peggy James
Richard Keit & Ru Weerakoon
Marsha Jones
Ed Lee
Judith Marlin
Richard Singleton
Clinton & Loni Stark*
Jeff & Cathie Thermond
KT & Mark Tucker
Barbara Vold
Wanda Waldera
Lisa & Jeff Westerinen
Diana Wirt
Anne Yoshiwara

PATRON'S CIRCLE | \$250+

Blanca Alvarado
Rebecca & David Ayer
Bob & Susan Biskeborn
Virginia Carpio
Mary Chin
Rev. John & Marcia Freeseemann
Flavia Geist & Donald Polensky
Richard A. & Cynthia A. Lake
Jan & Sofia Laskowski
John G Maier
Carolyn McInnes
Barbara Nilsen
Norvelle Ortega Benevento
Phyllis Perez-Sorensen
Glenn Reed
Marvin Sabado
Marilyn Sefchovich
Victoria Taketa
La Donna Yumori-Kaku

FRIEND'S CIRCLE | \$100+

Adonna J Amoroso
Kent & Barbara Anderson
Cecil Anison
Erin Barclay
Kathryn Barclay
Bob Baylor
Thomas Becker
Robert & Elaine Benoit
Jane & Link Bradley
Bob Brownstein
Steven & Karin Chase
Catherine Coe
Robert Creth
Ronald Danielson

INDIVIDUAL & BUSINESS SUPPORT

FRIEND'S CIRCLE | \$100+

(Continued)

Lloyd Darknell
Marlin Deckert
Paul & Connie Del Vigna
Lynn Dobson
Dr. & Mrs. Richard Dorsay
V. Gelczis & M. Diamond
The George Family,
In memory of Mary Jane LeFebvre
Marilynn Gilmore
Brian Glick
Martin Gorfinkel
Jane Hiatt
Darci Hill
Mary Idso
Teresa Jacobsen
Dennis Keane
Diana Keith
Robert & Mary Kelly
Harvey Kohs
Rick LaFrentz
Douglas & Mary Ann Le Blanc
Liz Lillard-Bernal
Joseph Maggolino
Maria Marquis

The McBurney-Lin Family
Jean Meyer
Jennifer Michael
E. Mireault
Sandra Moll
Alan Moo & Barbara Park
Peter Muller
Jack & Jessica Powell
Madalyn Radlauer
Matthew Reilly & April Durrett
Monika Restifo
Michelle Ruschetta
Joan & Peter Sharrock
Joan Smith
Neville Spadafore
Patrice Steiner
Laura Sternberg
Jim Tellefson
J.G. & Suzanne Van Stee
Rose Wahlin
Christine Wait
Linda Walton
Rebecca Wheale
Benjamin White
Michael B Wisper
Consuelo Yepiz
Cecily & Fernando Zazueta

*Reflects contributions received through August 31, 2023.

FRONT OF HOUSE VOLUNTEERS

Margaret Akdeniz
Lee Brunngraber
Susan Buchs
Missy Covello-Blank
Ebony Davys
Pamela DeMartini
Claudia Druhan
Lynnea Hagen
Garry Johnson
Daniel Katzen

Linda Lappin
Polina Lozhnevskaya
Alex McKale
Pam McLean
Pedja Miskin
Sarireh Nadimi
Ralph Occhipinti
Laurie Pines
Lynn Repetsky
Susan Shalit

Melinda Sheehan
Gerald Smilovitz
Rebecca Smilovitz
Joan Smith
Phyllis Sorensen
Jeaneen Sullivan
Diane Thorne
Kathy Weeks
Joyce Weiss
Chris Zegelin

INSTITUTIONAL SUPPORT

GOVERNMENT PARTNERS CIRCLE



FOUNDATIONS & VISIONARIES CIRCLE



Robert E. And Adele M. Boydston
Charitable Foundation



CORPORATE & LEADERSHIP CIRCLE



LPMD ARCHITECTS



Morgan Stanley

STRANGIS PROPERTIES



THE STAGE

SEASON 2023 | 2024

WEST COAST PREMIERE

BALD SISTERS

BY VICHET CHUM
DIRECTED BY JEFFREY LO

SEPT 13 – OCT 8, 2023

AWARD-WINNING COMEDY

THE PLAY THAT GOES WRONG

BY HENRY LEWIS, JONATHAN SAYER
& HENRY SHIELDS
DIRECTED BY KENNETH KELLEHER

NOV 15 – DEC 17, 2023

WEST COAST PREMIERE

PEOPLE WHERE THEY ARE

BY ANTHONY CLARVOE
DIRECTED BY BENNY SATO AMBUSH

JAN 31 – FEB 25, 2024

WEST COAST PREMIERE

HANGMEN

BY MARTIN MCDONAGH
DIRECTED BY JAMES REESE

APRIL 3 – 28, 2024

TO BE ANNOUNCED...

SUMMER MUSICAL

JUNE 5 – 30, 2024

L. PETER CALLENDER IN "SACOMO AT THE WELLDORF" 2023 Photo by DAVID LEFOR

POWERFUL.
PROVOCATIVE.
PROFOUND.

THE STAGE GRATEFULLY ACKNOWLEDGES OUR 2023-24 SEASON FUNDERS FOR THEIR GENEROUS SUPPORT OF OUR MISSION AND FUTURE: THE STATE OF CALIFORNIA | CITY OF SAN JOSE OFFICE OF CULTURAL AFFAIRS | THE COUNTY OF SANTA CLARA | SV CREATES APPLIED MATERIALS FOUNDATION | THE PACKARD FOUNDATION | THE SHUBERT FOUNDATION | THE BOYDSTON FOUNDATION

PURCHASE TICKETS AT
WWW.THESTAGE.ORG