

# GOYS AND DOLLS

A MUSICAL FABLE OF BROADWAY  
BASED ON A STORY AND CHARACTERS BY DAMON RUNYON



BOOK BY **ABE BURROWS** AND **JO SWERLING**

MUSIC BY **FRANK LOESSER**

DIRECTED BY **BILL ENGLISH**

CHOREOGRAPHY BY **NICOLE HELFER**

MUSIC DIRECTION BY **DAVE DOBRUSKY**

**SAN FRANCISCO**  
**PLAYHOUSE**

**EXECUTIVE PRODUCERS**  
ROBERT HULTENG  
PAUL ASETE & RON JENKS

# BOARD OF DIRECTORS

President ..... William Adler  
Nancy K Austin  
Bobak Bakhtiari  
Cynthia Bogolub  
Linda Brewer  
Andre Glenn Chenoweth  
Susi Damilano  
Bill English  
Margot Golding  
William J. Gregory  
Mr. Robert Hulteng  
Samuel Muir  
Betty Nakamoto  
Howard Oringer  
Louis Parnell  
Jeffrey Pfeffer  
Phyllis Rosenberg  
Frances Schendle  
Dana Shapiro  
Margaret Sheehan  
Michael Torres

Fred L. Karren  
Janet McAllister  
*In Memoriam*

## Land Acknowledgment

We acknowledge that the land on which we gather belongs to the Ohlone people of past, present, and future, whose homelands extend from Big Sur to the San Francisco Bay Area. We recognize that every member of the Bay Area community has, and continues to benefit from, the use and occupation of this land. We recognize that the Ohlone people are alive and flourishing members of the Bay Area communities today. We are grateful for the opportunity to live, work, and learn on their land. Visit [sfplayhouse.org/edi](http://sfplayhouse.org/edi) for more information.

### SAN FRANCISCO PLAYHOUSE

450 Post Street, San Francisco, CA 94102  
415-677-9596 • [www.sfplayhouse.org](http://www.sfplayhouse.org)  
[info@sfplayhouse.org](mailto:info@sfplayhouse.org)

# PRODUCTION SPONSORS

## Producers

### Executive Producers

Robert Hulteng  
Paul Asente & Ron Jenks

### Producers

Betty & Clifford Nakamoto  
Sharon & Samuel Muir  
Hart Family Foundation

### Associate Producers

Wayne Bryan  
Gale Gottlieb  
Nancy Larson  
David Madfes & Judith Leash  
Marcy Taylor Pattinson

## Artistic Underwriters

### Director

Craig Moody

### Choreographer

Louis Parnell & Jeff Wincek

### Music Director

Susannah Raub

### Scenic Designer

Kevin Gahagan

### Costume Designer

Joan Zinner

### Lighting Designer

Linda Brewer

### Sound Designer

Myles & Ida Abbott

### Properties Designer

Mark Herrmann & John Ontiveros

# WELCOME

Despite our deepening understanding of the subtleties and nuances of human behavior, despite a growing intellectual consensus that good and evil are inextricably intertwined, we are nonetheless living in a world being pushed deeper into extremist positions, where beliefs are polarized into black and white postures, each camp despising the other with little hope for reconciliation.



***Guys and Dolls***, the classic musical, despite its seemingly innocuous and sanitized depiction of colorful New York characters drawn from the writings of Damon Runyon in the mid-1930s, is actually a brilliant satire of binary thinking. From a 21st-century point of view, it is a story of sex workers, gambling addicts, and right-wing Christian evangelists that explores the binaries of male versus female, good versus evil, saint versus sinner, and criminal versus the law. In the nuanced mind of Damon Runyon and his champions, Jo Swerling, Abe Burrows, and Frank Loesser, ***Guys and Dolls*** illuminates the dangers of polarization. Its theme: it is impossible for anyone to be happy living in a world dominated by extremist thinking.

Adelaide's vision of reforming Nathan prevents her from truly understanding him. Sarah knows she could never love a gambler. Sky could never love an evangelist. Humans beaten down by the depression and reaching to gambling for hope are labeled criminals. As the Save-a-Soul general describes them, they are "evil-looking sinners." All the characters are miserably locked in polarities, in the kind of binary thinking that insists everything must be either a one or a zero, good or bad, wrong or right. Now, ninety years after Damon Runyon wrote the stories and seventy-five years after ***Guys and Dolls*** opened on Broadway, our world is perhaps even more bedeviled by the same kind of polarization.

Of course, like any enduring work of art, ***Guys and Dolls*** hides its message in its spectacular humor and one of American theatre's greatest musical scores and, of course, the antidote it suggests for the polarized world is love. It speaks to us across the decades as clear as the "bell" in one of its greatest songs. It beckons us to open our hearts at this holiday season to the power of forgiveness and transformation. If we look behind its cutesy reputation, we find a work of art determined to bend our souls to empathy and understanding. It does that by opening our hearts with great music, brilliant dialogue, and a message of healing for our troubled time.

**Bill English**, Artistic Director

**SAN FRANCISCO PLAYHOUSE**  
**BILL ENGLISH**, Artistic Director, **SUSI DAMILANO**, Producing Director  
and **ROBERT HULTENG** and **PAUL ASENTE & RON JENKS**, Executive Producers,  
present

# GUYS AND DOLLS

A musical fable of Broadway  
Based on a story and characters by Damon Runyon  
Music & Lyrics by FRANK LOESSER  
Book by JO SWERLING & ABE BURROWS

Directed by BILL ENGLISH  
Choreography by NICOLE HELFER  
Music Direction by DAVE DOBRUSKY

## Creative Team

Scenic Designer HEATHER KENYON <sup>^</sup>	Costume Designer KATHLEEN QIU	Lighting Designer YORK KENNEDY <sup>^</sup>	Sound Designer JAMES ARD
Properties Designer ANGELA KNUTSON	Wig Designer LAUNDRY TYME	Intimacy Director MAYA HERBSMAN	
Fight Director DAVE MAIER	Dialect Coach KIMBERLY MOHNE HILL	Dramaturg MARIE-CLAIRE ERDYNAST	
Assistant Director MARIE-CLAIRE ERDYNAST	Casting Director KIERAN BECCIA, <i>Casting Collective</i>	Assistant Costume Designer JASMIN SANTIAGO	

## Cast (in alphabetical order)

Benny Southstreet, Chorus.....	DAVE J. ABRAMS* [12.28.23 - 1.13.24]
Agatha, Angie the Ox, Chorus .....	MALIA ABAYON
Sarah Brown .....	ABIGAIL ESFIRA CAMPBELL*
Big Jule, Chorus.....	JESSICA COKER
Sky Masterson .....	DAVID TOSHIRO CRANE*
Chorus, Rusty Charlie, Emcee.....	JURÄ DAVIS*
Benny Southstreet, Chorus, <i>Assistant Dance Captain</i> .....	CHACHI DELGADO [11.16.23 - 12.27.23]
Chorus, General Cartwright, <i>Dance Captain</i> .....	ALISON EWING*
Lt. Brannigan, Chorus.....	ALEX HSU*
Nicely-Nicely Johnson, Chorus .....	KAY LOREN*
Mimi, Chorus .....	BRIGITTE LOSEY
Harry the Horse, Chorus.....	MILES MECKLING
Nathan Detroit, <i>Fight Captain</i> .....	JOEL ROSTER*
Arvide Abernathy, Chorus .....	JILL SLYTER
Adelaide.....	MELISSA WOLFKLAIN*
<i>Assistant Dance Captain</i> .....	LESLIE WAGGONER [12.19.23 - 1.13.24]

**Guys and Dolls** is presented through special arrangement with  
Music Theatre International (MTI). All authorized performance materials are also  
supplied by MTI. [mtishows.com](http://mtishows.com)

Any video and/or audio recording of this production is strictly prohibited.

## Understudies (in alphabetical order)

Nicely-Nicely Johnson.....	JESSICA COKER
Sky Masterson, Lt. Brannigan, Chorus.....	JOSE GALLETES [11.16.23 - 12.17.23]
Benny Southstreet, Chorus.....	NICOLE HELFER*
Nathan Detroit.....	ALEX HSU*
Sky Masterson, Lt. Brannigan, Chorus.....	KEITH PINTO* [12.19.23 - 1.13.24]
General Cartwright, Arvide Abernathy, Chorus.....	TIJU EVA REBANE*
Sarah Brown, Lt. Brannigan Chorus.....	BRENNIA SILVA
Adelaide.....	JILL SLYTER
Big Jule, Chorus.....	LESLIE WAGGONER

Understudies never substitute for the listed performers  
unless a specific announcement is made at the time of the performance.

## Stage Management

Stage Manager .....	DAREN A.C. CAROLLO*
Assistant Stage Manager.....	JO DAVITA ORTIZ*
Production Assistant .....	SAM HATTERSLEY
Production Assistant .....	ANTHONY ARANDA
Wardrobe Assistant.....	CAITLYN SLAVICH

## Production Team

Production Manager.....	ANGELA KNUTSON
Technical Director .....	TISH LEUNG
Assistant Technical Director .....	ARIAN GRIMSRUD
Production Coordinator.....	SARAH SELIG
Costume and Properties Coordinator .....	LEX NOSEWORTHY
Master Electrician .....	LIZ KRETER-KILLIAN
Scenic Charge Painter .....	CAYLA RAY-PERRY
Audio Supervisor .....	JAMES ARD
Audio Engineers.....	EDDIE CONTRERAS, RACHEL KATIN, ELLIOTT ORR
Automation Coordinator .....	ED JOHNSON
Shop Carpenter.....	YOUSSEF RIAHI
Carpenters .....	JEREMIAH DUGGER, JACOB EHRlich, GALEN FOLK, DAVID GARDENER, KENYATTA GEORGE, JOSHUA GRAVES, LEAH HAMMOND, WINSTON HENRY, BLUE HEPHAESTUS, GABRIEL MARTINEZ, TRENT MARTINEZ, JONAH PREZA, BECCA SALSBERG-FRANK, KEVIN VALOR, JIM WILSON
Electricians.....	SHY BANIANI, SAM FEHR, ELLE GHINI, TIFFANY HERNANDEZ, COLIN JOHNSON, KEVIN O'SHAUGHNESSY, CODY POEHNELT, TAYLOR RIVERS, BEN VISINI
Painters.....	KENZIE BRADLEY, WYN DI STEFANO, ADELINE SMITH, ALEXANDRIA XIONG
Pre-Production & Production Photographer .....	JESSICA PALOPOLI
Trailer Videographer .....	ADAM ELDER MONTANARO
Key Art Designer.....	LENA SEMENKOVA
Publicists .....	CARLA BEFERA, LAUREN GOLDFARB

## Special Thanks

Michael Cazares, Ed Johnson, TheatreWorks Silicon Valley, Actors' Equity Association,  
and the staff of the Kensington Park Hotel

\* Member of Actors' Equity Association. This theater operates under an agreement with Actors' Equity Association, the Union of Professional Actors and Stage Managers in the United States.



^ Member of United Scenic Artists, Local USA 829 of the International Alliance of Theatrical Stage Employees.



# Musical Numbers

## Act One

Overture	Orchestra
"Runyonland"	Company, Orchestra
"Fugue for Tinorns"	Nicely-Nicely, Benny, Rusty
"Follow the Fold"	Sarah, Mission Band
"The Oldest Established"	Nathan, Nicely-Nicely, Benny, Company
"I'll Know"	Sarah, Sky
"A Bushel and a Peck"	Adelaide, Company
"Adelaide's Lament"	Adelaide
"Guys and Dolls"	Nicely-Nicely, Benny
"Havana"	Orchestra, Havana Dancers*
"If I Were a Bell"	Sarah
"My Time of Day" / "I've Never Been in Love Before"	Sky, Sarah

## Act Two

"Take Back Your Mink"	Adelaide, Company
"Adelaide's Lament" (Reprise)	Adelaide
"More I Cannot Wish You"	Arvide
"The Crapshooter's Dance"	Orchestra, Crapshooter Dancers*
"Luck Be a Lady"	Sky, Company
"Sue Me"	Adelaide, Nathan
"Sit Down, You're Rockin' the Boat"	Nicely-Nicely, Company
"Marry the Man Today"	Adelaide, Sarah
"Guys and Dolls" (Reprise)	Company

\* Dance Specialty

## Musicians

Conductor	DAVE DOBRUSKY
Reed 1	NICK DI SCALA AUDREY JACKSON
Reed 2	WILL BERG HAL RICHARDS
Trumpet	JASON PARK JUSTIN J. SMITH
Trombone	DEREK JAMES
Drums	KIRK DUPLANTIS BEN VISINI
Keyboard	DAVE DOBRUSKY

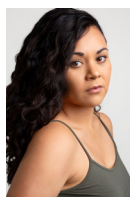
Not all musicians play at every performance.

The performance lasts approximately two hours and forty minutes. There is one intermission.

Performance Dates: November 16, 2023 – January 13, 2024  
Playbill content current as of November 7, 2023.

Please visit [sfplayhouse.org/playbill](https://sfplayhouse.org/playbill)  
for the most current version of our  
digital playbill or scan this QR code.

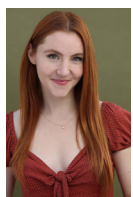




**MALIA  
ABAYON**



**DAVE J.  
ABRAMS**



**ABIGAIL ESFIRA  
CAMPBELL**



**JESSICA  
COKER**



**DAVID TOSHIRO  
CRANE**



**JURÁ  
DAVIS**



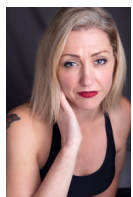
**CHACHI  
DELGADO**



**ALISON  
EWING**



**JOSE  
GALLENTE**



**NICOLE  
HELFER**



**ALEX  
HSU**



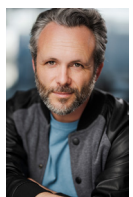
**KAY  
LOREN**



**BRIGITTE  
LOSEY**



**MILES  
MECKLING**



**KEITH  
PINTO**



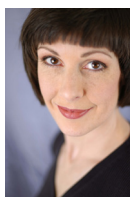
**TIJU EVA  
REBANE**



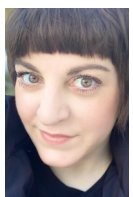
**JOEL  
ROSTER**



**BRENNA  
SILVA**



**JILL  
SLYTER**



**LESLIE  
WAGGONER**



**MELISSA  
WOLFKAIN**

# BIOGRAPHIES

## CAST

### MALIA ABAYON

#### Agatha, Angie the Ox, Chorus

Malia (she, her) is beyond grateful to make her debut at San Francisco Playhouse. Last season she performed an ensemble role and understudied Nina in *In the Heights* (Center REPeratory Company) as well as Swing and understudy for Audrey in *Little Shop of Horrors* and a Kit-Kat Dancer in *Cabaret* (6th Street Playhouse). Other favorite roles include Mimi in *Rent*, Adela in *Bernarda Alba*, The Acid Queen in *The Who's Tommy*, and *Revelation: The Musical* (Off-Broadway). Malia earned a BA in dramatic arts from the University of California, Davis and trained at Broadway Dance Center and Steps on Broadway in New York. She is grateful to continue working in theatre as a teaching artist and performer. Malia also teaches Inferno Hot Pilates classes in her spare time. [maliaabayon.com](http://maliaabayon.com) | [@Malia27](https://www.instagram.com/Malia27)

### DAVE J. ABRAMS\*

[12.28.23 - 1.13.24]

#### Benny Southstreet, Chorus

Dave Abrams is returning for his second San Francisco Playhouse production. Recent credits include Chip in *The 25th Annual Putnam County Spelling Bee*, Bobby in *A Chorus Line*, Benny in *In the Heights*, Andre in *Ain't Misbehavin'*, Seaweed in *Hairspray* (2019 TBA Award for Outstanding Featured Actor), and Coalhouse in *Ragtime* (2018 TBA Award for Outstanding Actor in a Principal Role). Dave earned a BA in Theatre and Dance from the University of California, Berkeley. In addition to performing, Dave works as a teaching artist sharing his passion for the performing arts with youth. "Enjoy the show!"  
IG: [@davejabrams](https://www.instagram.com/davejabrams)

### ABIGAIL ESFIRA CAMPBELL\*

#### Sarah Brown

Abigail (she, her) is thrilled to return to San Francisco Playhouse after playing Celia in *As You Like It*. Originally from New Jersey,

she earned a BFA in musical theatre at the University of Miami and is now grateful to call San Francisco home. Favorite credits include Ariel in *The Little Mermaid* (Sierra Repertory Theatre), Molly in *Peter and the Starcatcher* (Adrienne Arsht Center), and Andy in the original cast of the new rock musical *Coming Soon* (Z Space). "Always, ForEv&Teddy." @badgalwabby

## JESSICA COKER

**Big Jule, Chorus**

**U/S: Nicely-Nicely Johnson**

Jessica (she, her) is thrilled to make her San Francisco Playhouse debut. She most recently played Adult Woman in *Spring Awakening* and Emily in *Elf The Musical*. Favorite roles include Audrey II in *Little Shop of Horrors*, Miss Gardner in the musical *Carrie*, Shawntel in *Jerry Springer: The Opera*, and Emma Borden in *LIZZIE* (Ray of Light Theatre), Henri in *The View Upstairs* (New Conservatory Theatre Center), Emma Goldman in *Ragtime*, Ursula in *The Little Mermaid*, and Penelope Pennywise in *Urinetown* (Berkeley Playhouse), as well as roles in *Gravity - A New(tonian) Musical* (San Francisco Bay Area Theatre Company) and *Smokey Joe's Cafe* (Broadway by the Bay). She is a founding member of the comedy trio B.O.O.B.S. and The Coker Sisters. Jessica is a dog mom and cabaret singer. In her spare time, she can be found changing her hair color, running a theatre company, and traveling the world. "Love to Rob for letting me miss dinner every night."

## DAVID TOSHIRO CRANE\*

**Sky Masterson**

David (he, him) is a New York based multi-hyphenate performer hailing from Berkeley. Selected credits include *Tuck Everlasting* and the world premiere of *The Prince of Egypt* (TheatreWorks Silicon Valley), *The Glass Menagerie* (Sacramento Theatre Company), *Vietgone* and *Miss Bennet: Christmas at Pemberley* (Capital Stage), *Don't Stop Me* by Dave Malloy and *Next to Normal* (Youth Musical Theater Company), *Indoor Person* (Normal Ave), *Noises Off* (Hillbarn Theatre), *Grease, Hair*, and *West Side Story* (Mountain Play), and *110 in the Shade* (Actor's Co-op Theatre Company). You can catch him on the (tiny) silver screen in numerous BuzzFeed sketches, some with over 150 million views. David is a proud graduate of the musical theatre program at the University of California, Los Angeles. [davidtcrane.com](http://davidtcrane.com)

## JURÄ DAVIS\*

**Chorus, Rusty Charlie, Emcee**

Jurä (he, him) is super excited to make his West Coast theatrical debut at San Francisco Playhouse. He has performed all over the East Coast from New York City all the way down to North Carolina. Favorite productions include *In the Heights*, *Jesus Christ Superstar*, and *Cats* (The North Carolina Theatre), *Memphis*, *And Then There Were None*, *A Christmas Carol*, and the title role in *The Stinky Cheese Man* (Walnut Street Theatre), and *Chicago* (Piedmont Players Theatre). Most recently, Jurä workshopped the new musical *Devotion*, directed by Maggie Burrows, in New York City. He thanks the creative team for this fabulous opportunity.

## CHACHI DELGADO

[12.19.23 - 1.13.24]

**Benny Southstreet, Chorus**

**Assistant Dance Captain**

Chachi is so excited to return to San Francisco Playhouse after performing here as Richie in *A Chorus Line* and Young Buddy in *Follies*. Other recent credits include *Into the Woods* and *Hello, Dolly!* (Mountain Play) and *I, Too, Sing America* (San Francisco Bay Area Theatre Company). He thanks his family, friends, and Youth Musical Theater Company for all the love and support. Chachi dedicates all his performances to his grandfather. He hopes you sit back and enjoy this brilliant show!

## ALISON EWING\*

**Chorus, General Cartwright**

**Dance Captain**

Alison (she, her) is thrilled return to San Francisco Playhouse after playing Sheila in *A Chorus Line*. Broadway credits include Lulu in *Cabaret* (Roundabout Theatre Company) and Tanya in *Mamma Mia!* National tours include Countess Lily in *Anastasia*, *An American in Paris*, Fraulein Kost in *Cabaret*, Tess in *Flashdance*, and Tanya in *Mamma Mia!* Regional favorites include Helen in *Fun Home* (Berkeley Playhouse), *Hand to God* (San Jose Stage Company), *Emma*, *Big River*, *Into the Woods*, *Harold and Maude*, and *It Ain't Nothin' But the Blues* (TheatreWorks Silicon Valley), *The 25th Annual Putnam County Spelling Bee* (San Jose Repertory Theatre), *Sweet Charity* (Center REpertory Company), *Jacques Brel Is Alive and Well and Living in Paris* and *Beggar's Holiday* (Marin Theatre Company), *The Last Five Years* (Playhouse West), and Desiree in *A Little Night Music*, the



title role in *Irma La Douce*, and *A Grand Night for Singing* (42nd Street Moon). Alison is also an audiobooks narrator with Tantor and Audible. "Love to Keith and Feather." [alisonewing.com](http://alisonewing.com)

## ALEX HSU\*

**Lt. Brannigan, Chorus**

**U/S: Nathan Detroit**

Alex returns to San Francisco Playhouse after playing Minister Cai in *Chinglish* last season. Other work here includes *La Cage aux Folles* and *A Christmas Story*. National tours include *Irving Berlin's White Christmas*, directed by Walter Bobbie and *The King and I*, directed by Baayork Lee. Regional credits include *The Headlands* and *Tales of the City, The Musical* (American Conservatory Theater), *Little Shop of Horrors*, *Gypsy*, and *Pacific Overtures* (TheatreWorks Silicon Valley), *The Great Leap* (San Jose Stage Company), *Miss Saigon* (Westchester Broadway Theatre), *Me and My Girl* (Marin Theatre Company), and *A Chorus Line* (Broadway by the Bay). His choreography has been seen on many Bay Area stages, including San Francisco Playhouse, 42nd Street Moon, Palo Alto Players, Broadway by the Bay, and Hillbarn Theatre, for which he has garnered recognition as a TBA Award finalist and a San Francisco Bay Area Theatre Critics Circle nominee. Catch Alex as the world-weary Triad mobster Bennie in the indie feature *Protection Detail*, now streaming at [tubitv.com](http://tubitv.com).

## KAY LOREN\*

**Nicely-Nicely Johnson, Chorus**

Kay (they, them) is a San Francisco native who graduated from the Pacific Conservatory of the Performing Arts. Past credits include Glinda and Auntie Em in *The Wizard of Oz* (American Conservatory Theater), Audrey II in *Little Shop of Horrors* (TheatreWorks Silicon Valley), Maria in *The Sound of Music* (Throckmorton Theatre), Nell in *Ain't Misbehavin'* (Hillbarn Theatre), Charlotte in *A Little Night Music*, Armelia in *Ain't Misbehavin'*, and Marie in *Fiorello!* (42nd Street Moon), Woman 2 in *Songs for a New World*, Bird Woman and Miss Andrew in *Mary Poppins*, Miss Shields in *A Christmas Story*, and *She Loves Me* (San Francisco Playhouse), Bessie Smith in *The Devils Music* and Ms. Meyers and Alexandra Daniels in *Freaky Friday* (Center REPeratory Company), Donna in *Mamma Mia!* (Berkeley Playhouse), and Crystal in *Little Shop of Horrors* (Ray of Light Theatre) [@bigbrownlead](http://@bigbrownlead)

## BRIGITTE LOSEY

**Mimi, Chorus**

Brigitte (she, her) is a native Bay Area actress and theatre maker. She is jazzed to be making her San Francisco Playhouse debut! Past roles include Squeaky Fromme in *Assassins* (Hillbarn Theatre), Mrs. Wormwood in *Matilda The Musical* (Palo Alto Players), Mary Lane in *Reefer Madness* (Ray of Light Theatre), Ali in *Mamma Mia!* (San Jose Stage Company), Little Red Riding Hood in *Into the Woods* (Los Altos Stage Company), and Kelly Manning in *The Mad Ones* and Heather Chandler in *Heathers: The Musical* (Pacifica Spindrift Players). "Thank you to my family, friends, and partner for all their love and support. Happy Holidays!"

## MILES MECKLING

**Harry the Horse, Chorus**

Miles (he, him) is a Sacramento native who is excited to make his San Francisco Playhouse debut and overjoyed to join this cast! He most recently played an Angel in *Kinky Boots* at Berkeley Playhouse. Regional credits include *The Scottsboro Boys* (42nd Street Moon), the West Coast premiere of *Elvis The Musical* (Sierra Repertory Theatre), *A Christmas Carol* (Center REPeratory Company), *On Your Feet!* (Woodminster Summer Musicals), *H.M.S. Pinafore* and *Mamma Mia!* (Sacramento Theatre Company), and *The Gift of the Magi* (The Classic Theatre). When not on stage, Miles loves to roll dice in epic campaigns of Dungeons and Dragons with his friends or test his mental capacity in escape rooms throughout California. He thanks family and friends for all the love and support. Catch Miles next in *Rent* at Berkeley Playhouse. [@Leroi23](http://@Leroi23)

## JOEL ROSTER\*

**Nathan Detroit**

**Fight Captain**

Joel (he, him) is a multiple award-winning actor, director, and playwright who is honored to make his San Francisco Playhouse debut. For the last twenty years, he has performed all over the Bay Area with many companies, including Shorenstein Hays Nederlander Theatres, Shotgun Players, Ray of Light Theatre, Center REPeratory Company, The Eugene O'Neill Foundation Tao House, Contra Costa Musical Theatre, and Berkeley Playhouse. Favorite credits include Black Stache in *Peter and the Starcatcher* (Berkeley Playhouse), Leon Czolgosz in *Assassins* (Ray of Light Theatre), and Pablo Picasso in *Picasso at*

**the Lapin Agile** (Town Hall Theatre Company). An arts educator and arts administrator since 2002, Joel has taught over two thousand students over his tenure as a public and private acting coach and is a freelance grant writer for nonprofit arts organizations. The founder and artistic director of The Other Other Theatre Company (or TOOTCo), he currently resides in Pleasant Hill with his incredibly supportive partner, Jenn, and their brilliant and insane beagle, Chava. Joel dedicates this performance to his mother, Maggie. [joelroster.com](http://joelroster.com)

## JILL SLYTER

**Arvide Abernathy, Chorus**

**U/S: Adelaide**

Jill (she, her, they) is enjoying her second career as a registered nurse after retiring from show business in 2007. She finds that exposing herself to the vulnerability of live performance, where sheer terror lives, is a great way to unwind from the daily stresses of hospice nursing. Before retiring from musical theatre, Jill performed in **Show Boat** on Broadway, as Lola in the national tour of **Damn Yankees** opposite Jerry Lewis, as Peggy Sawyer in the national tour of **42nd Street**, and as Cassie in **A Chorus Line**, in an unbelievable number of national, European, and international tours and regional productions. Regionally, she played Rose in **Gypsy**, Polly in **Crazy for You**, Woman 2 in **And the World Goes 'Round**, Fastrada in **Pippin**, Miss Sandra in **All Shook Up**, Adelaide in **Guys and Dolls** opposite Maurice Hines, the title role in **Sweet Charity**, one of the **Cats**, the Acrobat in **Matilda The Musical** and Martha in **Irving Berlin's White Christmas** (CMT San Jose Marquee Productions), Solange LaFitte in **Follies** (San Francisco Playhouse), and most recently Mrs. White in **Clue** (Sierra Repertory Theatre). For a brief moment, she carried a 4.00 GPA as a mechanical and chemical engineering major at the Colorado School of Mines before finally graduating summa cum laude with a BS in nursing from California State University, Monterey Bay. Jill hopes to be the first engineer nurse actor on Mars. [jillslyter.com](http://jillslyter.com)

## MELISSA WOLFKLAIN\*

**Adelaide**

Melissa is thrilled to be back at San Francisco Playhouse where she recently completed a sold-out run as Val in **A Chorus Line**. She also performed here in **Starting Here, Starting Now** and **Cabaret**. This summer she took on the Baker's Wife in **Into the Woods** at Mountain

Play, where she previously played the title role in **Peter Pan**. Melissa has performed in **Merrily We Roll Along**, **A Gentleman's Guide to Love and Murder**, **Dames at Sea** (TBA Award), and **Me and My Girl** at 42nd Street Moon. Additional credits include the national tours of **42nd Street** and **Irving Berlin's White Christmas**, and roles in **Ragtime**, **Sense and Sensibility**, **Pride and Prejudice**, and **Tinyard Hill** (TheatreWorks Silicon Valley), **Cabaret** and **Funny Girl** (Hillbarn Theatre), and **Shrek** (3-D Theatricals). Coming up, she will play Bea in **Something Rotten** at Hillbarn Theatre. "Thanks Mom, Dad, Nicole, and all the sibs for your continued support!" @melissawolfklain

## UNDERSTUDIES

### JOSE GALLENTE

**[11.16.23 - 12.17.23]**

**Sky Masterson, Lt. Brannigan, Chorus**

Jose (he, him) is very excited to make his San Francisco Playhouse debut! Jose graduated from the American Musical and Dramatic Academy (AMDA) in New York. Favorite credits include the role of Shrek in **Shrek The Musical**, Usnavi in **In the Heights**, and Fred Casely in **Chicago** (CMT San Jose), Emmett Forrest in **Legally Blonde** (Pied Piper Players), Chino in **West Side Story** (Hillbarn Theatre), and Richard Bailey in **Kinky Boots** (Berkeley Playhouse). Last summer, Jose originated the role of Kris in **Come See About Me**, a new musical created by Broadway performers Donald Jones Jr. and Brandon Kelly, at Cedar Point in Sandusky. @josegallentes

### NICOLE HELFER\*

**Benny Southstreet, Chorus**

Nicole is an award-winning choreographer, director, performing artist, and has been a dance and theatre teacher for over twenty-five years. Most recently she played Cassie in **A Chorus Line** here at San Francisco Playhouse, for which she was also choreographer. Additional performance credits include Marian Paroo in **The Music Man**, Fantine in **Les Misérables** (Shellie Award), Audrey in **Little Shop of Horrors** (Shellie Award nomination), Velma Kelly in **Chicago** (San Francisco Bay Area Theatre Critics Circle award nomination), Betty Schaeffer in **Sunset Boulevard** (Shellie Award nomination), Sarah in **The Lover** by Harold Pinter, Kate Monster and Lucy T. Slut in the regional premiere of **Avenue Q**, Miraid in **Brimstone** (SFBATCC and Shellie Award nominations), and Kitty in **Sweet Charity**,

as well as featured ensemble roles in **A Gentlemen's Guide to Love and Murder** and **Me and My Girl**. She has choreographed and been a swing for **Cabaret**, **Groundhog Day The Musical**, and **Follies** here at the Playhouse.

## KEITH PINTO\*

[12.19.23 – 1.13.24]

### Sky Masterson, Lt. Brannigan, Chorus

Keith is so excited to be back on stage at San Francisco Playhouse, especially with his lovely and talented wife, Alison Ewing. He has performed here in **Starting Here, Starting Now**, as Zach in **A Chorus Line**, as Bobby in **Company**, and as The Baker in **Into the Woods**. His choreography was featured here in **Dogfight** and **Colossal**, for which he received a San Francisco Bay Area Theatre Critics Circle award. He also received a SFBATCC award for his role as Bill in **Me and My Girl** (42nd Street Moon) and TBA Awards for his role as The Emcee in **Cabaret** (Hillbarn Theatre) and choreography of **Altar Boys** (Center REPeratory Company). Other favorites include **1776** (American Conservatory Theater), **Hedwig and the Angry Inch** and **The Rocky Horror Show** (San Jose Stage Company), **Dames at Sea** (42nd Street Moon), and **Lucky Stiff** (Center REPeratory Company).

## TIU EVA REBANE\*

### General Cartwright,

### Arvide Abernathy, Chorus

Tiiu (she, her) is the development director for San Francisco Playhouse. In nearly ten years on staff here, she has loved the chance to understudy, including past work in **Ideation**, **Company**, **Born in East Berlin**, and **Follies**. Tiiu is thrilled to join **Guys and Dolls**, her favorite production since performing the role of Adelaide (at far too young an age.) Her professional acting credits span over twenty-five years, including many based out of New York City. National tours include Female Authority Figure and understudying in **Hairspray** and Mother in **The Giver**. Other favorites include **Baby** (Bristol Riverside Theatre), the Narrator in **Joseph and the Amazing Technicolor Dreamcoat**, Hertz in **Rock of Ages** (Center REPeratory Company), and a one-woman show aboard Oceania Cruises. Tiiu earned a degree in musical theatre from Ball State University and a diploma in dance and musical theatre from the Academy of the Arts. She has been a proud member of Actors' Equity Association since 2008.

## BRENNA SILVA

### Sarah Brown, Lt. Brannigan, Chorus

Brenna (she, her) is pleased to join the San Francisco Playhouse family! Recent roles include Anne in **A Little Night Music** (Spreckles Theatre Company), Lily in **The Secret Garden** (Los Altos Stage Company), Eliza Doolittle in **My Fair Lady** (Pacifica Spindrift Players), Anne and a Cagelle in **La Cage aux Folles** (San Jose Playhouse), understudy for Julie in **Carousel** (Opera San Luis Obispo), Rosa Bud in **The Mystery of Edwin Drood** (Foothill Music Theatre), Luisa in **The Fantasticks** (Tri-Valley Repertory Theatre), Emily in **A Christmas Carol** (Hillbarn Theatre), Truly Scrumptious in **Chitty Chitty Bang Bang** (Rio Theatre for the Performing Arts), and Tzeitel in **Fiddler on the Roof** (Cabrillo Stage). "Love to Mom, Dad, David, and my cats Pippin and King Arthur!" [brennasammon.com](http://brennasammon.com)

## LESLIE WAGGONER

### Big Jule, Chorus

### Assistant Dance Captain

Leslie (she, her) recently directed and choreographed **Cruel Intentions: The '90s Musical** (Ray of Light Theatre) and choreographed and served as assistant director for **Assassins** (Hillbarn Theatre), the musical **SQREAM** (OASIS), and the hit immersive **The Rocky Horror Show** (Ray of Light Theatre and OASIS). Other recent credits include choreographer for the West Coast premiere of **American Psycho** (Ray of Light Theatre) and director and choreographer for **Debbie Does Dallas: The Musical** (OASIS), **The Full Monty**, **The Wedding Singer**, and **Hairspray** (Bay Area Musicals), **Bloody Bloody Andrew Jackson** (Custom Made Theatre Co.), **Ghost** and **Pageant** (OMG, I Love That Show! Productions), **She Loves Me** (42nd Street Moon), **La Cage aux Folles** (Altarena Playhouse), and the film **Shit & Champagne** by D'Arcy Drollinger. She has performed locally with American Musical Theatre of San Jose, American Conservatory Theater, Ray of Light Theatre, Hillbarn Theatre, Diablo Theatre Company, Bay Area Musicals, OASIS, Magic Theatre, Berkeley Playhouse, Pop Culture Immersives, Santa Cruz Shakespeare, The San Francisco Shakespeare Festival, and Killing My Lobster. Future productions include **Falsettos** at 42nd Street Moon and **Something Rotten** at Hillbarn Theatre. Leslie is a proud union member of the Stage Directors and Choreographers Society. "Love and gratitude to Zac!"

## MUSICIANS

### WILL BERG

#### Reed 2

Will (he, him) is a San Francisco based woodwind doubler and jazz musician. Favorite theatre credits include *La Cage aux Folles* (Bay Area Musicals), *Follies* (42nd Street Moon), *Let's Dance* (Transcendence Theatre Company), *Cabaret* (Contra Costa Civic Theatre), *Fiddler on the Roof* (STARS 2000), and the 2022 national tour of *Ain't Too Proud*. "I am very lucky and forever grateful for the unconditional support and love my wife, Tessa, gives me every day. Also, a big thanks to Dave Dobrusky and the whole San Francisco Playhouse team for putting on great theatre productions every year and having me on board this time!"

### NICK DI SCALA

#### Reed 1

Nick played for national touring productions of *My Fair Lady*, *The Prom*, and *Frozen*. He has also played for *Beach Blanket Babylon*, the San Francisco, California, Napa, Sacramento, Santa Rosa, and Oakland symphonies, West Bay Opera, Ray Charles, The Temptations, The Manhattan Transfer, Johnny Mathis, Kevin Spacey, Della Reese, Peabo Bryson, Reuben Studdard, and Isaac Hayes. Nick regularly plays for TheatreWorks Silicon Valley, Woodminster Summer Musicals, and other regional theatres. He has arranged music for Tony-nominated performer Christiane Noll and the New York Pops and served as music director for over twenty Bay Area theatre productions. Nick works with the estate of jazz pioneer Don Ellis preparing music for publication and producing new and archival recordings, and he reset the piano-vocal score for *Anyone Can Whistle* for Music Theatre International.

### DAVE DOBRUSKY

#### Keyboard, Conductor

Dave has been working in the Bay Area for twenty-five years. Highlights include *Follies*, *Groundhog Day The Musical*, *Cabaret* (San Francisco Bay Area Theatre Critics Circle award), *Sunday in the Park with George* (SFBATCC award), *La Cage aux Folles*, *Man of La Mancha* (SFBATCC award), and *City of Angels* (San Francisco Playhouse) and *Hot Mikado*, *110 in the Shade*, *Dames at Sea*, *Me and My Girl*, *Ain't Misbehavin'*, *The Most Happy Fella*, *Paint Your Wagon* (SFBATCC award), and *Scrooge in Love!* (42nd Street Moon). He has worked with many theatre companies,

including Theatre Rhinoceros, Ray of Light Theatre, TheatreWorks Silicon Valley, New Conservatory Theatre Center, and Hillbarn Theatre. Dave is originally from Albuquerque and attended the Oberlin Conservatory of Music.

### KIRK DUPLANTIS

#### Drums

A native of Louisiana, Kirk (he, him, his) made his way through the New Orleans music scene, playing with many of that city's top jazz, blues, rock, and R&B groups. He earned a BA in jazz studies from the University of New Orleans and formed a contemporary jazz quintet. Kirk has toured the country extensively as a member of New Orleans based indie-rock group Mighty Brother, and is planning to release an debut album in 2023. He moved to the Bay Area in 2019 to take a music teaching position, and his first theatre gig was the San Francisco Playhouse production of *Groundhog Day The Musical*. In his current band, Swamp Cake, Kirk has brought the slanky, swampy grooves from down on the bayou to the West Coast. He currently teaches pre-kindergarten to eighth grade music at Sea Crest School in Half Moon Bay.

### AUDREY JACKSON

#### Reed 1

Audrey (she, her, hers) is a multi-instrumentalist who has played for musical theatre productions from Napa down to Monterey. Past credits include *Indecent*, *Sunday in the Park with George*, *A Christmas Story*, *Cabaret*, and *Groundhog Day The Musical* at San Francisco Playhouse. She is also now a proud part owner of Forrests Music in Berkeley. Her hobbies include cooking and hiking. When not engaged in musical activities, discovering the intricacies of QuickBooks, or quarantining, Audrey can be found in New York attending Broadway musicals and Mets games, or relaxing in the Napa Valley with her dearest friends.

### JASON PARK

#### Trumpet

Jason, trumpeter at the San Francisco Playhouse since 2013, has performed in their productions of *A Chorus Line*, *Twelfth Night*, *Follies*, *Mary Poppins*, *Cabaret*, *A Christmas Story The Musical*, *She Loves Me*, *La Cage aux Folles*, *City of Angels*, *Promises Promises*, *Into the Woods*, and *Camelot*. Jason actively works with several Bay Area symphony orchestras,

musical theatre companies, and chamber ensembles, and has experience as a music director, musician contractor, production assistant, and professional chef. He currently is program administrator for the Grammy award-winning San Francisco Boys Chorus. Jason is a proud member of the Musicians Local 6 and Actors' Equity Association.

## DEREK JAMES

### Trombone

Derek performs in Broadway, jazz, and salsa shows, and enjoys being in the horn section of numerous local and touring bands of every genre, giving him the well-deserved reputation of being a consummate all-rounder and highly regarded studio session player. Derek was classically trained at the University of Wisconsin at Madison and played in the Wisconsin Chamber Orchestra, the Madison Symphony Orchestra, and the Shreveport Symphony Orchestra before moving to San Francisco in 1993. A few of his favorite shows to perform in have been *Wicked*, *The Lion King*, *Frozen*, *The King and I*, and *Soul Train*.

## HAL RICHARDS

### Reed 2

Hal currently performs with Jeff Sanford's Cartoon Jazz Orchestra, the Berkeley Saxophone Quartet, the Dave Parker Quintet, the California Pops Orchestra, the Golden Gate Park Band, David Hardiman's San Francisco All-Star Big Band, and Laurent Fourgo. Hal has previously performed with Carol Channing, Terry Gibbs, Eric Marienthal, Bob Florence, Bill Perkins, Fred Radke, Lennie Niehaus, Steve Turre, Charles Tolliver, The Revels, San Francisco Children's Opera, and the San Francisco Mime Troupe. Additional credits include multiple CD projects, television soundtracks, and musical productions with Magic Theatre, San Francisco Playhouse, Broadway by the Bay, Marines' Memorial Theatre, Berkeley Playhouse, Contra Costa Musical Theatre, Peninsula Civic Light Opera, Verismo Opera, the Guadalajara Symphony Orchestra, the Fillmore Jazz Festival, and at the North Beach Jazz Festival. Hal is a member of the Musicians Union Local 6 and has taught music in the San Francisco Unified School District for more than thirty years.

## JUSTIN J. SMITH

### Trumpet

Justin (he, him) is thrilled to be returning to the San Francisco Playhouse for his ninth musical

production since *Promises, Promises* in 2014. He is a freelance musician and the Upper School Music Teacher at the San Francisco Day School. A musical chameleon, you will find Justin performing and recording with small group jazz bands, musical theatre productions, pop and rock 'n' roll bands, orchestras, and classical chamber music ensembles. He is the resident trumpet soloist at All Souls Episcopal Parish in Berkeley and plays solo cornet with the North American Brass Band Association (NABBA) competing San Francisco Brass Band.

## BEN VISINI

### Drums

Ben Visini has been drumming for seventeen years, with a focus in rock, funk, jazz, and rap styles. He has played at conventions and festivals such as *MAGFest*, *MAGWest*, *Fanime*, and the *Chinatown Music Festival* (2018, 2019, 2021). He has also featured at established San Francisco venues such as Hotel Utah and Neck of the Woods, playing local shows there for over four years. He is currently the drummer for Kat Robichaud's *Misfit Cabaret*. Ben has also played in the pit for musicals for over a decade at venues including the San Francisco Conservatory of Music, Palo Alto Players, San Mateo High School, and the Castellija School. In addition to drumming, Ben is a comedy musician, an electrician and carpenter, and the host of the *Neck of the Woods* open mic.

## AUTHORS

### DAMON RUNYON

#### Story & Characters

Damon Runyon was an American short-story writer, journalist, and humorist. He was the archetype of the tough, hardnosed street reporter who fraternized socially with gangsters and hoodlums. Damon began in the newspaper business as a child and went on to cover news, sports, politics, and crime. He also published verses and short stories in national publications such as *Harper's Weekly* and *McClure's*. By the 1920s, Damon had developed his own distinct style as a prolific author, and in the late 1930s began writing and producing movies in Hollywood. His works served as the basis for twenty-nine feature films, including *Lady for a Day* directed by Frank Capra (1933), *Little Miss Marker* starring Shirley Temple (1934), *The Lemon Drop Kid* starring Bob Hope (1951), and *Pocket Full of Miracles* with Bette Davis (1961). In all, his literary legacy includes over 700 stories, novellas, plays, articles, essays,

and poems. Today Damon is perhaps best known to millions for **Guys and Dolls**, which has become one of the most produced musicals of all time. Its material comes from two of his stories, "The Idyll of Miss Sarah Brown" and "Blood Pressure" but borrows characters and story elements from several of his other stories, most notably "Pick The Winner."

## FRANK LOESSER

### Composer & Lyricist

Frank Loesser has been called one of the most versatile of all Broadway composers. Each of his five Broadway musicals (**Guys and Dolls**, **The Most Happy Fella**, **Greenwillow**, **How to Succeed in Business Without Really Trying**, and **Where's Charley?**), is a unique contribution to musical theatre. Before Broadway, Frank supplied lyrics to the music of such greats as Jule Styne, Burton Lane, and Hoagy Carmichael, penning such hit film songs as "I Don't Want to Walk Without You," "Two Sleepy People," "Heart and Soul," and, as composer and lyricist, "Spring Will Be a Little Late this Year," "On a Slow Boat to China," and his 1949 Academy Award winner "Baby, It's Cold Outside." He won Tony Awards for **Guys and Dolls** and **How to Succeed in Business Without Really Trying** as well as the Pulitzer Prize in Drama for **How to Succeed in Business Without Really Trying**.

## ABE BURROWS

### Book

Abe Burrows was a radio humorist, songwriter, singer and pianist, television personality, panelist, playwright, and stage director. His collaborations with Frank Loesser earned him four Tony Awards, Best Musical for **Guys and Dolls** and Best Musical, Book, and Direction for **How to Succeed in Business Without Really Trying**, and the Pulitzer Prize in Drama for **How to Succeed in Business Without Really Trying**. Abe also wrote, directed, or doctored **Can-Can**, **Make a Wish**, **Silk Stockings**, **Breakfast at Tiffany's**, **Say, Darling**, **Two on the Aisle**, **Three Wishes for Jamie**, **Happy Hunting**, **Good News**, and **Cactus Flower**.

## JO SWERLING

### Book

Jo Swerling was an Academy Award-nominated screenwriter and playwright. His work includes the comedy **Street Cinderella** for the Marx Brothers, for whom he wrote their first movie, the unreleased silent comedy **Humor Risk**. Jo scored success by writing

the book and lyrics for the musical revue **The New Yorkers** and the play **The Kibitzer**, before moving to Hollywood to write the screenplay for the Frank Capra picture **Ladies of Leisure**, the first of several collaborations with the director. His screenplays also include **It's a Wonderful Life**, **Platinum Blonde**, **Behind the Mask**, **Pride of the Yankees**, **Lifeboat**, and **Leave Her to Heaven**. He provided some uncredited writing for the **Gone with the Wind** screenplay.

## CREATIVE TEAM

### BILL ENGLISH

#### Director

Bill (he, him) is the co-founder and artistic director of San Francisco Playhouse. Alongside co-founder Susi Damilano, he has guided its growth from a bare-bones storefront to the second-largest nonprofit theatre company in San Francisco. Bill designed the first theatre space at 536 Sutter Street for the Playhouse and reconfigured its current space from a 700-seat hall into the current gracious and intimate 199-seat venue. Over the last twenty years, he has served as director, actor, scenic designer, and sound designer, winning San Francisco Bay Area Theatre Critics Circle nominations or awards in each of those categories. Bill is also an accomplished musician and builder. Milestone accomplishments include introducing Pulitzer Prize winner Stephen Adly Guirgis to the Bay Area by directing three of his plays; commissioning over thirty playwrights including Theresa Rebeck, Aaron Loeb, Lauren Gunderson, Lauren Yee, and Christopher Chen; and developing world premieres from workshops to Sandbox Series to Mainstage Season to Off-Broadway (including the Off-Broadway transfers of **Ideation** and **Bauer**), and presenting the very first production of **Grounded** by George Brant which later played at the Public Theater. He coined the phrase "the empathy gym," which drives everything at the Playhouse.

### DAVE DOBRUSKY

#### Music Director

Dave has been working in the Bay Area for twenty-five years. Highlights include **Follies**, **Groundhog Day The Musical**, **Cabaret** (San Francisco Bay Area Theatre Critics Circle award), **Sunday in the Park with George** (SFBATCC award), **La Cage aux Folles**, **Man of La Mancha** (SFBATCC award), and **City of Angels** (San Francisco Playhouse) and **Hot**



**Mikado, 110 in the Shade, Dames at Sea, Me and My Girl, Ain't Misbehavin', The Most Happy Fella, Paint Your Wagon** (SFBATCC award), and **Scrooge in Love!** (42nd Street Moon). He has worked with many theatre companies, including Theatre Rhinoceros, Ray of Light Theatre, TheatreWorks Silicon Valley, New Conservatory Theatre Center, and Hillbarn Theatre. Dave is originally from Albuquerque and attended the Oberlin Conservatory of Music.

## NICOLE HELFER

### Choreographer

Nicole is an award-winning choreographer, director, and performing artist who has worked with many well-known Bay Area theatre companies such as TheatreWorks Silicon Valley, 42nd Street Moon, Broadway by the Bay, Center REPeritory Company, Contra Costa Musical Theatre, Ray of Light Theatre, Mountain Play, Lamplighters Music Theatre, and Pacific Coast Repertory Theatre. She has choreographed for San Francisco Playhouse since 2019, starting with the successful production of **Cabaret** (San Francisco Bay Area Theatre Critics Circle award and TBA Award finalist) and followed by **Groundhog Day The Musical** (SFBATCC nominee), **Starting Here, Starting Now** (SFBATCC nominee), **Twelfth Night** (SFBATCC award), **Follies** (SFBATCC nominee), **Indecent** (SFBATCC award), **As You Like It** (SFBATCC nominee), and most recently **Clue** and **A Chorus Line**. Additional choreography credits include **She Loves Me** (SFBATCC award), **Dames at Sea** (TBA Award finalist and SFBATCC nominee), **The Music Man** (TBA Award finalist), **West Side Story** (TBA Award), **In the Heights** (TBA Award), **No, No, Nanette** (TBA Award finalist and SFBATCC nominee), and **LIZZIE** (SFBATCC nominee). Nicole is delighted to be a part of this amazing production with this incredibly talented team of artists!

## JAMES ARD

### Sound Designer

James is a noisemaker with a focus on new works, live experiences, and immersive stage productions. Recent theatrical sound design credits include **Our Country** (Octopus Theatricals, Under The Radar Festival, The Public Theater), **Mrs. Christie** (TheatreWorks Silicon Valley) **This Much I Know, Exit Strategy, Colonialism is Terrible but Pho is Delicious, Dry Powder**, and **The Royale** (Aurora Theatre Company), **This Is Who I Am** (Playco, Woolly

Mammoth Theatre Company, Guthrie Theater, Oregon Shakespeare Festival, American Repertory Theater), **9 Parts of Desire** (Portland Center Stage), **Free For All** and **La Ronde** (Cutting Ball Theater), **Wolf Play** and **A Small Fire**, (Shotgun Players), **Our Town** (Center REPeritory Company), **Chinglish** and **Indecent** (San Francisco Playhouse), and **Time of Change** (Joe Goode Performance Group). He is a resident artist with both Golden Thread Productions and Crowded Fire Theater.

## DAREN A.C. CAROLLO\*

### Stage Manager

Daren (he, him) is honored to be back at San Francisco Playhouse where he served as stage manager for **A Chorus Line** last season. He is an award-winning director and producer with over 175 credits. Daren has been a leader in the Bay Area arts scene for two decades, previously serving as producing artistic director of 42nd Street Moon and Berkeley Playhouse, executive director of Broadway by the Bay, and artistic director for Diablo Theatre Company and Diablo Light Opera Company. His production company, Carollo & Palumbo, LLC, produced the musical **bare** Off-Broadway and **A Time to Kill** on Broadway. Favorite directing projects include **A Gentleman's Guide to Love and Murder, Les Misérables, Sweeney Todd, Jekyll & Hyde, Ripcord, Clybourne Park, Noises Off** (twice), **One Flew Over the Cuckoo's Nest, The Trip to Bountiful, Dracula** (twice), **Peter Pan** (twice), **Miss Saigon, The Drowsy Chaperone** (twice), **A Grand Night for Singing, Rabbit Hole, Doubt, Curtains**, and **To Kill a Mockingbird** (twice). Daren has directed for Diablo Theatre Company, Pacific Coast Repertory Theatre, Napa Valley Opera House, Ohlone College, Solano College, Town Hall Theatre Company, the On Broadway Gala for Diablo Regional Arts Association, El Campanil Theatre, and Contra Costa Civic Theatre. He is a proud member of Actors' Equity Association since 1997 and Theatre Bay Area since 1999. For all that Daren has been blessed and honored to accomplish theatrically thus far, he is most proud of his greatest accomplishment: being the father of his son, Jack.

## CASTING COLLECTIVE

### Kieran Beccia,

### Casting Director

The Casting Collective is a team of casting directors with extensive experience and deep ties to the Bay Area theatre community.

They have created and maintain the most comprehensive, regularly updated local talent database in the region. Casting locally is the predominant practice of the Collective. In the wake of the pandemic and the massive national call for greater EDI representation and prioritization, regional theatre has fundamentally changed. The Casting Collective is a response to this call for change in the way theatres access, promote, and hire artists, in order to foster an anti-racist, inclusive, collaborative future. Their purpose is to advance the interests of local actors and encourage institutions to explore, engage with, and hire from within this community instead of searching elsewhere for their talent. [castingcollective.org](http://castingcollective.org)

## MARIE-CLAIRE ERDYNAST

### Assistant Director, Dramaturg

Marie-Claire previously directed *Red Bike* by Caridad Svich which was co-produced by her production company Liminal Space and the Santa Clarita Shakespeare Festival. She previously served as assistant director for *As You Like It*, *Twelfth Night*, and *Tiny Beautiful Things* here at San Francisco Playhouse, and *Women on the Verge of a Nervous Breakdown* at Town Hall Theatre Company. Additionally, Marie-Claire is a puppeteer who recently performed in the *Driveway Follies* in 2023. She is the assistant director and a performer in *The Ground* produced by OddSavvy, which hopes to be fully produced in summer of 2024, as well as *Drupadi* with Shadowlight Productions. [mcerdynast.com](http://mcerdynast.com)

## MAYA HERBSMAN

### Intimacy Director

Maya is an award-winning Middle Eastern Ohlone Land based intimacy professional and educator. She has served as the first intimacy director at theatres across Northern California, including Berkeley Repertory Theatre, TheatreWorks Silicon Valley, San Francisco Playhouse, Shotgun Players, Golden Thread Productions, Z Space, Cutting Ball Theater, Crowded Fire Theater, and San Francisco Opera. Her work has been featured in the *San Francisco Chronicle*, *J Magazine*, and *HowlRound*. Maya is currently on faculty at American Conservatory Theater, Urban School of San Francisco, and Stanford University. San Francisco Playhouse credits include *Cashed Out*, *The Daughters*, and *[hieroglyph]*. Maya has a certification in intimacy direction through Intimacy Directors and Coordinators.

## KIMBERLY MOHNE HILL

### Dialect Coach

Kimberly has coached over 150 productions for companies including San Francisco Playhouse, American Conservatory Theater, TheatreWorks Silicon Valley, Berkeley Repertory Theatre, Arizona Theatre Company, City Lights Theater Company, Aurora Theatre Company, Hillbarn Theatre, and San Jose Stage Company. She is thrilled to return to San Playhouse for *Guys and Dolls*, after dialect coaching here for *Clue*, *Indecent*, *Cabaret*, *Noises Off*, and *Yoga Play*. Kimberly is a professor of acting, voice, and speech and current chair of the Department of Theatre and Dance at Santa Clara University. In addition, she was recently designated as a certified Patsy Rodenburg Associate in the field of voice, speech, and presence training.

## YORK KENNEDY^A

### Lighting Designer

York is a lighting designer for the performing arts and for architecture. His designs for the stage have been seen in theaters across America and in Europe including Arena Stage, Chicago Shakespeare Theatre, Berkeley Repertory Theatre, Seattle Repertory, American Conservatory Theater, the Los Angeles and Portland operas, Hartford Stage, Yale Repertory Theatre, Brooklyn Academy of Music, and the Denver Center for the Performing Arts. He has designed over forty-five productions for The Old Globe Theatre in San Diego, and spent six seasons as resident lighting designer for the company's Shakespeare Festival. In the dance world he has designed for Malashock Dance, Brian Webb, and Tracey Rhodes. As an architectural lighting designer he has designed both nationally and internationally for numerous themed environments, theme park, residential, retail, restaurant, and museum projects including Warner Bros. Movie World in Madrid, Spain, Le Centre de Loisirs in Morocco, Motiongate Theme Park in Dubai, and The LEGO Racers 4D attractions in Germany, Denmark, England, and the US. Recent projects include the world premiere of *The 13th Child* at Santa Fe Opera, *Gianni Schicchi* at Teatro alla Scala in Milan, and new architectural lighting for Yerba Buena Center for the Arts in San Francisco. He is a graduate of the California Institute for the Arts and the Yale School of Drama.



## HEATHER KENYON<sup>^</sup>

### Scenic Designer

Heather (she, her) is a Bay Area scenic designer and lighting designer. Previous scenic designs for San Francisco Playhouse include **A Chorus Line**, **Clue**, **As You Like It**, **Follies**, **Twelfth Night**, **Starting Here**, **Starting Now**, **The Fit**, and **Washed Up on the Potomac**. She designed lighting for the Playhouse productions of **Heroes of the Fourth Turning**, **Songs for a New World**, **I Was Right Here**, **Art**, and **Hold These Truths**. Additional scenic design credits include **The Code** and **Ti-Jean and His Brothers** (Young Conservatory and MFA programs at American Conservatory Theater), **American Hero** and **Cloud 9** (Custom Made Theatre Co.), **Men on Boats** (Palo Alto Players), and **The Book of Will** (Santa Clara University). She has also worked with TheatreWorks Silicon Valley, Aurora Theatre Company, Ballet San José, CMT San José, South Bay Musical Theatre, and WVLO Musical Theatre Company. Heather teaches scenic design at Santa Clara University and is a proud member of United Scenic Artists, IATSE Local USA 829. [heatherkenyon.net](http://heatherkenyon.net)

## ANGELA KNUTSON

### Properties Designer, Production Manager

Angela (she, her) is excited to be in her fifteenth season with San Francisco Playhouse. She first joined the Playhouse as an assistant stage manager for **Landscape of the Body**. Since then, Angela has not wanted to leave and is now production manager here. She is so grateful for all the opportunities the Playhouse has opened up for her. Angela also works closely with the Westlake School for the Performing Arts, where she discovered her love of performing arts.

## JO DAVITA ORTIZ<sup>^</sup>

### Assistant Stage Manager

Jo (they, them) is an Actors' Equity Association stage manager who has been stage managing at a variety of levels for six years. This is their second production at San Francisco Playhouse, after recent work on **A Chorus Line**. Their favorite part about stage management is to bring shows together from pre-production through closing. Credits include **School of Rock**, **Funny Girl**, **The Complete Works of William Shakespeare (Abridged)**, **The Agitators**, **Crumbs from the Table of Joy**, **Two Trains Running**, **The Travelers**, and **Where Did We Sit on the Bus?**

## KATHLEEN QIU

### Costume Designer

Kathleen is a Los Angeles based costume designer. She is a proud member of IATSE 705 Motion Picture Costumers. Previous credits at San Francisco Playhouse include **As You Like It**, **Heroes of the Fourth Turning**, and **The Great Khan**. Other recent credits include **Lysistrata** and **The Killing Game** (California State University, Northridge) and **Pony** (Cutting Ball Theater). In addition, she has worked on major film and television productions such as **Shining Vale**, **Grown-ish**, **Westworld**, and **The Accidental Getaway Driver** as well as a variety of short films and independent productions. [kathleenq.com](http://kathleenq.com) | [@kat.jlq](https://twitter.com/kat.jlq)

## LAUNDRA TYME

### Wig Designer

Laundra is known for her incisive style and incredible bespoke creations. She is the founder and creative force behind Wigs by Tips. A veteran of the San Francisco drag scene, Laundra also served as wig master for **Beach Blanket Babylon**, the longest-running live theatre revue in history.

## FOUNDERS

### SUSI DAMILANO

#### Founder, Producing Director

Susi (she, her) is co-founder and producing director of the San Francisco Playhouse. She is a five-time recipient of the Excellence in Theatre Award for Principal Actress in a Play from the San Francisco Bay Area Theatre Critics Circle for the Playhouse productions of **Abigail's Party**, **Harper Regan**, **Bug**, **Six Degrees of Separation**, and **Reckless**. Susi has also performed leading roles here in **Heroes of the Fourth Turning**, **Yoga Play**, **The Effect**, **The Roommate**, **Red Velvet**, **Tree**, **Bauer**, **Abigail's Party**, **Harper Regan**, **Coraline**, **Slasher**, **One Flew Over the Cuckoo's Nest**, **Landscape of the Body**, **First Person Shooter**, **Jesus Hopped the 'A' Train**, **The Crucible**, **Kimberly Akimbo**, **Our Town**, and **The Smell of the Kill**. Directing credits include Playhouse productions of **Indecent**, **Twelfth Night**, **Groundhog Day The Musical**, **Cabaret**, **Mary Poppins**, **Noises Off**, **She Loves Me**, **Stage Kiss**, **Company**, **Stupid Fucking Bird**, **Into the Woods**, **A Behanding in Spokane**, **Den of Thieves**, and **Wirehead** (SFBATCC nomination), the West Coast premieres of **Honey Brown Eyes** (SFBATCC nomination), **Dead Man's Cell Phone**,

**Coronado**, **The Mystery Plays**, and **Roulette**, and the world premieres of **On Clover Road** by Steven Dietz, **From Red to Black** by Rhett Rossi, and **Seven Days** by Daniel Heath in the Sandbox Series.

## BILL ENGLISH

### Founder, Artistic Director

Bill is the co-founder and artistic director of the San Francisco Playhouse. In twenty years with Susi Damilano, he has guided its growth from a bare-bones storefront to the second-largest nonprofit theatre company in San Francisco. Bill designed our first theater space at 536 Sutter Street and personally reconfigured our current space from a barn-like 700-seat hall into the current gracious and intimate 199-seat venue. Along the way, he has served as director, actor, scenic designer, and sound designer, winning San Francisco Bay Area Theatre Critics Circle nominations or awards in each of those categories. Bill is also an accomplished musician and builder. Milestone accomplishments include bringing Pulitzer Prize-winner Stephen Adly Guirgis to the Bay Area by directing three of his plays, commissioning twelve playwrights including Theresa Rebeck, Aaron Loeb, Lauren Gunderson, Lauren Yee, and Christopher Chen, and developing world premieres from workshops to Sandbox Series to Mainstage Season to Off-Broadway (including the Off-Broadway transfers of **Ideation** and **Bauer**), and presenting the very first production of **Grounded** by George Brant which later played at the Public Theater. He coined the phrase “the empathy gym” and it drives everything at the Playhouse.

## PRODUCTION AFFILIATIONS

### ACTORS' EQUITY ASSOCIATION

Founded in 1913, Actors' Equity Association is the US labor union that represents more than 50,000 actors and stage managers. Equity seeks to foster the art of live theatre as an essential component of society and advances the careers of its members by negotiating wages and working conditions and providing a wide range of benefits, including health and

pension plans. Actors' Equity is a member of the AFL-CIO and is affiliated with FIA, an international organization of performing arts unions. [actorsequity.org](http://actorsequity.org)

### UNITED SCENIC ARTISTS

United Scenic Artists, Local USA 829, IATSE, is a labor union and professional association of Designers, Artists, Craftspeople, and Department Coordinators, organized to protect craft standards, working conditions and wages for the entertainment and decorative arts industries. The members of Local USA 829 work in film, theatre, opera, ballet, television, industrial shows, commercials, and exhibitions. [usa829.org](http://usa829.org)

### MUSIC THEATRE INTERNATIONAL

Music Theatre International (MTI) is one of the world's leading theatrical licensing agencies, granting theatres from around the world the rights to perform the greatest selection of musicals from Broadway and beyond. Founded in 1952 by composer Frank Loesser and orchestrator Don Walker, MTI is a driving force in advancing musical theatre as a vibrant and engaging art form. MTI works directly with the composers, lyricists, and book writers of these musicals to provide official scripts, musical materials, and dynamic theatrical resources to over 70,000 professional, community and school theatres in the US and in over 60 countries worldwide. MTI is particularly dedicated to educational theatre and has created special collections to meet the needs of various types of performers and audiences. MTI's Broadway Junior™ shows are 30- and 60-minute musicals for performance by elementary and middle school-aged performers, while MTI's School Editions are musicals annotated for performance by high school students. MTI maintains its global headquarters in New York City with additional offices in London (MTI Europe) and Melbourne (MTI Australasia).

[mtishows.com](http://mtishows.com)

---

Biography content provided by the actors, designers, and other artists profiled. Opinions expressed therein do not necessarily reflect the views of San Francisco Playhouse or BAYSTAGES Services.

\* Member of Actors' Equity Association, the Union of Professional Actors and Stage Managers.

^ Member of United Scenic Artists, Local USA 829 of the International Alliance of Theatrical Stage Employees.

# FOUNDATION & CORPORATE DONORS

We gratefully acknowledge the following corporate and foundation support.

## **\$25,000+**

Barbara and Gerson Bakar Foundation  
Clay Foundation – West  
Google, Inc.  
Jewish Community Federation  
Kanbar Charitable Trust  
Khachatourian Foundation  
Kimball Foundation  
National Endowment for the Arts  
Phyllis C. Wattis Foundation  
Grants for the Arts  
The San Francisco Foundation  
The Shubert Foundation  
Taproot Foundation

## **\$10,000+**

Alafi Family Foundation  
American Theatre Wing  
Aroha Philanthropies  
The Bernard Osher Foundation  
The Sheri and Les Biller Family Foundation  
Castilian Fund  
The Mill Foundation  
SF Arts Commission  
Ululani Foundation  
The Weinstein Gallery

## **\$5,000+**

Adobe Matching Grants  
Barney's, Inc.  
Edgerton Foundation  
Kenneth Rainin Foundation  
National New Play Network  
Stanley S. Langendorf Foundation  
The Tournesol Project  
Zellerbach Family Foundation

## **\$1,000+**

Autodesk, Inc.  
Benevity Community Impact Fund  
Creative Capacity Fund  
Dramatists Guild Fund  
Elks Lodge No. 3  
Fleishhacker Foundation  
Lerner, Veit & Stanaland LLP  
The Over the Rainbow Fund  
Thomas Reuters  
RHE Charitable Foundation  
Sloan Foundation  
Society for Community Work  
William & Flora Hewlett Foundation  
Zephyr Real Estate

## **MATCHING GIFTS & GIFTS UNDER \$1,000**

AmazonSmile  
Aon Foundation  
Apple, Inc.  
Berk Family Charitable Fund  
Cengage Learning  
Charity Motors  
The Charles Schwab Foundation  
Chevron Humankind  
Center for Learning in Retirement Drop Box  
Farella Braun & Martel LLP  
Fidelity Charitable Gift Fund  
Fuel for Change  
IBM International Foundation  
Johnson & Johnson  
Lawrence Livermore  
National Laboratory  
Levi Strauss Foundation  
Macy's Foundation  
Mechanics Bank  
Morgan Stanley Smith Barney  
MSCI, Inc.  
Qualcomm  
Salesforce Foundation  
Santa Valencia LLC  
Silicon Valley Community Foundation  
Verizon Foundation  
Visa, Inc.

# SAN FRANCISCO PLAYHOUSE

San Francisco Playhouse is celebrating twenty years as San Francisco's Empathy Gym. Presenting a diverse range of plays and musicals, the Playhouse produces new works as well as reimagined classics, "making the edgy accessible and the accessible edgy." Its bold Sandbox Series – the only subscription series in the Bay Area devoted solely to presenting world premieres – is dedicated to nurturing new playwrights beyond readings. There is also a commitment to more in-depth new work through individual commissions, including plays by Ruben Grijalva, Michael Gene Sullivan, Theresa Rebeck, Christopher Chen, Lauren Gunderson, and Aaron Loeb. The Playhouse has developed, presented, and transferred three world premieres to New York. Gunderson's **Bauer** and Loeb's **Ideation** opened Off-Broadway, and Loeb's **Abraham Lincoln's Big, Gay Dance Party** won the best of New York International Fringe Festival. Their commitment to new works in the San Francisco Playhouse Sandbox Series has been honored by grants from the National Endowment for the Arts and the American Theatre Wing. The Playhouse secured their two highest-profile commissions to date: **Shoot Me When** by Ruben Grijalva, which was presented online during the pandemic and was awarded a Will Glickman Award, **Seared** by Theresa Rebeck, which opened the 2016-2017 Mainstage Season and was nominated for ten San Francisco Bay Area Theatre Critics Circle awards, and **You Mean to Do Me Harm** by Christopher Chen, winner of the Lanford Wilson Award from the Dramatists Guild of America in 2016. Works developed by the Playhouse have gone on to receive regional and national acclaim. Yockey's **Pluto** – a Playhouse commission – was named a National New Play Network Rolling World Premiere, George Brant's **Grounded** – a Playhouse premiere – was produced at the Public Theater starring Anne Hathaway and directed by Julie Taymor in 2015, and Loeb's **Abraham Lincoln's Big, Gay Dance Party** has received productions from Birmingham to Off-Broadway. [sfplayhouse.org](http://sfplayhouse.org)

## OUR MISSION

Our mission is to share stories that uplift spirits, deepen self-awareness, and nurture compassionate community. Our theater is an Empathy Gym where we come to practice our powers of compassion. Here, safe in the dark, we can risk sharing in the lives of the characters. We feel what they feel, fear what they fear, and love what they love, and as we walk through our doors we take with us greater powers of understanding to make our community a better place, one play at a time.

# OUR STAFF

Founder & Artistic Director .....	BILL ENGLISH
Founder & Producing Director .....	SUSI DAMILANO
Production Manager .....	ANGELA KNUTSON
Company Manager .....	WERA VON WULFEN
Administrative Manager .....	MORGAN REISINGER
Marketing Director .....	DONNY GILLILAND
Technical Director .....	TISH LEUNG
Assistant Technical Director .....	ARIAN GRIMSRUD
Development Director .....	TIIU EVA REBANE
Associate Artistic Director .....	MARIE-CLAIRE ERDYNAST
Production Coordinator .....	SARAH SELIG
Bookkeeper .....	ANGELINA SHUMAN
Audience Development Manager .....	QUENSELLA MILLER
House Lead .....	JULIET HICKS
Concessions Manager .....	MICHAEL CAZARES
Rising Stars Coordinator .....	LINDSAY SPORLEDER
Costume and Properties Coordinator .....	LEX NOSEWORTHY
HR Specialist .....	DANIKA RODRIGUEZ INGRAHAM
Assistant Concessions Manager .....	TORI LEUNG
Marketing Associate .....	JUAN REBUFFO
Artistic & Events Associate .....	BECKY HIRSCHFELD
Development Associates .....	MADELINE DENOPIO NASTARAN NAZARIAN
Operations Associate .....	JULIET HICKS
Box Office Manager .....	KYZIAH SHAVERS
Assistant Box Office Manager .....	ASHLEIGH FRANKLIN
Box Office Associates .....	BRITTANY KAMERSCHEN DANIEL PEREZ RENEE ROGOFF
Front of House Associates .....	KAMARIA ATIBA BECKY HIRSCHFELD GRACE JOSEPH ADA MAY JIM McCUNN QUENSELLA MILLER TRE WEBER
Concessions Associates .....	KAMARIA ATIBA MIGUEL CHAVEZ GRACE JOSEPH STEPHEN VAUGHT TRE WEBER
Safety Officers .....	KAMARIA ATIBA MICHAEL CAZARES JULIET HICKS
Resident Playwright .....	ANGELA KNUTSON MORGAN REISINGER
Empathy Gym Dog .....	AARON LOEB EMI

All images and/or content provided by San Francisco Playhouse staff, contractors, and/or creative artists unless otherwise credited. Opinions expressed by contractors, contributors, and/or creative artists do not necessarily reflect the views of San Francisco Playhouse or BAYSTAGES Services. Photo credits are included as provided.

# PRODUCER CIRCLE DONORS

Donors at this level enjoy recognition around a production of their choice, are invited to readings and working rehearsals, and receive many other great benefits for their generous gifts. Donations are listed for the year ended October 12, 2023. Every attempt is made to keep these lists as accurate and correct as possible. Please contact the development department by calling 415.866.8907 or sending email to [development@sfplayhouse.org](mailto:development@sfplayhouse.org) if we have made an error, you have any questions, or would like to make a gift.

## Season Producer - \$75K+

Gerson Bakar Foundation  
San Francisco Grants  
for the Arts  
Mr. Robert Hulteng  
William McAllister, In memory of  
Janet McAllister  
Sharon & Samuel Muir &  
Morgan & Michael Callahan

## Executive Producer - \$25K+

William & Marsha Adler  
Paul Asente & Ron Jenks  
Linda Brewer  
CA Small Business Relief Grant  
William J. Gregory  
Ululani Foundation  
Betty Hoener  
Fred Karren, In loving memory of  
Beth Karren  
Sue Kubly  
Helen E. Land  
William McAllister & Judy Parker  
William McAllister &  
Susan Watson  
Clay Foundation - West  
Bill & Ursula Moffett  
Betty & Clifford Nakamoto  
Jan & Howard Oringer  
Phyllis & Jerry Rosenberg

## Producer - \$10K+

Robert Beadle  
The Bernard Osher Foundation  
Cynthia & David Bogolub  
Steven & Karin Chase  
Margot Golding &  
Michael Powers  
Keith Goldstein &  
Donna Warrington  
Greg Gorel  
Elizabeth Groenewegen  
Rich & Judy Guggenheim  
Hart Family Foundation  
Fred Hartwick  
Nick & Sandy Javaras  
Karla Jones  
Duff Kurland &  
Carol Nusinow Kurland  
Michael Levy & Michael Golden  
Jeffrey Pfeffer & Hildy Shandell  
The Ronald Whittier  
Family Foundation

Diarmuid Russell &  
Heather Podruchny  
Dana & Gary Shapiro  
Margaret Sheehan  
Christian Chadd Taylor  
The Tournesol Project  
Arne & Gail Wagner  
Rowland Weinstein  
Elizabeth Werter & Henry Trevor

## Associate Producer - \$5K+

Karin Albright  
Bobak Bakhtiari  
Wayne Bryan & Dick Bufania  
Bruce Colman  
Karen & David Crommie  
Sheila & John Dalton  
Joan Eckart  
Helene & Larry Edelman  
Vicki & David Fleishhacker  
Kevin Gahagan  
Miriam Gauss  
Gale Gottlieb  
Billie & Thomas Horst  
Muriel Kaplan & Bob Sturm  
Leslie Karren In Loving Memory  
Of Beth Karren  
Nancy Thompson & Andy Kerr  
Nancy Larson  
Tom & Stephanie Lima  
Ann Ludwig & Joe Short  
David Madfes & Judy Leash  
Alan Mattacola, In loving  
memory of Emile Reyes  
Jackie & Richard Mayer  
Bonnie McGregor  
Kate Miller  
Craig Moody  
Erica Nietfeld & Royce Kelley  
Marcy Taylor Pattinson  
Tim & Lyn Potter  
Harry & Kay Rabin  
Susannah Raub  
Barbara & Saul Rockman  
Joan Rost, In memory of  
Clayton Rost  
Richard Andersen &  
Ursula Schorn  
Mary Wais, In memory of  
R. Jeffrey Wells  
Robert Weston  
Karissa Wong  
Galen Workman &  
Geoffrey Kulik

## Patron of the Arts - \$2K+

Myles & Ida Abbott  
Claire Axelrad & Mark Pahlavan  
Katherine Blenko &  
Joseph Belanoff  
Audrey Bojack  
Frances Campra  
Diane Compagno Miller  
Mike Crosby & Dr. Marsha Brown  
Suzanne Cross & John Simpson  
Paul Feasby  
Krystyna Finlayson  
Mike & Lea Ann Fleming  
Ron Goodman &  
Richard Leadbetter  
James Helman &  
Josephine Bellacomo  
Sandra Hess  
Intersection for the Arts  
Linda Jaeger  
Carolyn Jayne  
Brian & Joanie Johnson  
Carl Jukkola & Desmond Lee  
Susan Kolb  
Roman & Hamila Kownacki  
Susan Ledford  
Sharon Litsky & John Sampson  
Paulette Lueke  
David May &  
Susan Carluen May  
Rob Mitchell & Jaime Caban  
Sophie-Charlotte Moatti &  
Matthew Houston  
Linda Montgomery & Roy Hahn  
William O'Keeffe  
Thomas Owen  
Louis Parnell & Jeff Wincek  
Dr. David & Charlene Ploss  
Lois & Arthur Roth  
Larry Russo  
Marilyn Rutz & David Levy  
Betty & Jack Schafer  
Frances Schendle  
Tanya Slesnick & Ted Mitchell  
Society for Community Work  
Damien Keller & James Sokol  
Barbara Sommer  
John Steinfirt & Sharon Collins  
Michele Stratton  
Carol Sundell  
Samuel Test  
Misty Tyree  
James Warren, In honor of  
Bill Gregory

**Inner Circle - \$1,500+**

David Anderson & Nancy Kaible  
 Karen Anijar & Robert Appleton  
 Marietta Bartoletti  
 Buz & Anne Battle  
 Ronald & Susan Berman  
 Neil Bray, In loving memory of  
 Cris Bray  
 Michele Burton  
 Nina Buthee  
 Marcus & Sara Byruck  
 Nancy K Austin & Bill Cawley  
 Mark Cohen & Jackie Pelavin  
 Jill Connolly  
 Tom Driscoll & Nancy Quinn  
 Georgiana Evans  
 Rodney Farrow  
 Ruth & Les Finkelstein  
 The Francis Family  
 Gail Gabiati & Tom Borden  
 Gary & Yvonne Goddard  
 Will Green  
 In memory of John Trout  
 Julia & Gordon Held  
 Daniel & Debra Hunter  
 Bob & Margaret Ippolito  
 Linda Romley-Irvine &  
 Perry Irvine, in memory of  
 Chuck Yingling  
 Dennis James & Michael Pereira  
 Eleanor & Richard Johns  
 Peter & Diane Lawrence  
 Jennifer S. Lindsay  
 Dexter & Kathie Lowry  
 George Lucas &  
 Tom Rothgiesser  
 Michael Mathis  
 Craig & Lorraine Mautner  
 Anne Maxwell  
 Karin & Gregory McClune  
 Patty McCrary  
 Kathleen McManus  
 Barbara Morrison  
 Ron Morrison  
 Nancy Ozsogomonyan  
 Emily Papert Williams  
 The Roberts-Hansen  
 Gratitude Fund  
 Bill & Julie Ryan  
 The Shulman Family Fund  
 Blanche & Steve Sillen  
 Susie & Britt Stitt  
 Jay Streets  
 Jenn & David Stringer  
 Alyosha & Moya Verzhbinsky  
 Zack Wasserman, In memory of  
 Margaret Zweiback  
 Beth Weissman  
 Sue & Richard Wollack  
 The Wu Fund

**Benefactor - \$750+**

Elizabeth & George Anders  
 Itamar Arel

Mechanics Bank  
 Duncan Barr  
 Elaine Baskin & Ken Krechmer  
 Lynda Beigel & Ellen Davis  
 Michele & David Benjamin  
 Roy Bergstrom  
 Berk Family Charitable Fund  
 The Libi & Ronald Cape  
 Philanthropic Fund  
 Alice Chambliss  
 Ron Clyman &  
 Francoise Mauray  
 Judith Cohen & Malcolm Gissen  
 Jim Colopy  
 Edward Cullen  
 Judith & Harold Dittmer  
 Bill & Janet Eaglstein  
 John & Linda Elman, in honor of  
 Margaret Sheehan &  
 Bruce Colman  
 Bill English & Susi Damilano  
 Michele Epstein  
 Mary & Tom Field  
 Lynn FONa  
 Marianne Friebel &  
 Jacqueline Rogers  
 Amy & Mort Friedkin  
 Jeff Gaines & John Griffin  
 Diana Gay-Catania &  
 David Catania  
 Francis Gilliland  
 Douglas Grigg  
 Gail Hamilton  
 Jeannene Hansen  
 Lawrence & Rebecca Helzel  
 Caroline Hillhouse  
 Al Hoffman & David Shepard  
 Emily & Lisa Honig, In honor of  
 Lorraine & Victor Honig  
 Joan Huff  
 Nancy Igdaloff  
 Lyn Isbell  
 Bruce W. Jenett &  
 Nola Masterson  
 Barbara Keck  
 Sandra Keith &  
 Robert Shephard  
 Veronica & Rodney Kiefer  
 Judith Kurtz  
 Kenneth C. Larson &  
 Linda Adams  
 Kathleen Lawshe  
 Rebecca Lebuhn  
 Karen Loane, In honor of my  
 dear friend Leslie Karren  
 Eugenia Loken  
 Barbara Loomis &  
 Stephen Elspas  
 Barry Margerum  
 Dennis & Karen May  
 Lester Mayer  
 Virginia Menezes  
 Gail Murphy  
 Joyce Nachtrieb  
 Elisa Neipp

Kenneth Noyes & Alan Pardini  
 Thomas O'Brien  
 John Ontiveros &  
 Mark Herrmann  
 Leo & Charlene Ott  
 Lynne Painter  
 Jeremy Platt  
 Maribeth Portz  
 Nancy & Alan Raznick  
 The Eddie Reynolds &  
 Hernán Correa Family Fund  
 Judith & Charles Rino  
 Daniel Field & Gary Robinson  
 Dan Roller  
 Arthur & Sheri Schmauder  
 Pamela Sebastian  
 Carola Shepard  
 Richard & Diana Shore  
 Judith Siebenthal  
 Mike Smith  
 Paul Spiegel  
 Ian Stockdale & Ruth Leibig  
 Elizabeth S. Strong  
 Karen Sullivan & Ken Mitchell  
 Pamela Thompson  
 Maggie Thompson  
 Warren Thomson  
 Mary Lou Torre & Rich Hagan  
 In memory of Thomas Urani  
 William E Turner  
 William Van Dyk & Margi Sullivan  
 Marcia & David Vastine  
 Boris Veytsman  
 Arlene Waksberg &  
 Charles M. Clark  
 Paul Werner  
 Richard West  
 The Wilder Family  
 Barbara & Mordechai Winter  
 Michael B. Wisper  
 Joan C. Zinner  
 Rick Zonne

**Friend - \$250+**

Helen Anders  
 Randall Askin  
 Ed Bobin III  
 David Barker  
 Ron Barrington  
 Kristin Bass  
 Randie Bencanann &  
 Bobby Baron  
 Sandra Blair & Carol Cohen  
 Cristina Blanco  
 John S. & Kathy Blum  
 Richard & Jacqueline S. Boberg  
 The Cat Call Choir  
 Ruth Botchan  
 Vivian Brown  
 Jennifer Burden  
 Dan & Suzanne &  
 Shannon Carroll  
 Lily Chow  
 Sharon & Dennis Clisham

**Friend - \$250+**  
**Continued**

Carolyn Copeland McKinney  
William Crawford  
Scott Dai  
Suzanne & Bruce Degen  
Mark Devencenzi  
Arnold Dito  
Sharon Djemal & Peter Rukin  
Sandra Drew  
Thomas Edwards &  
Rebecca Parlette-Edwards  
Carol Emory  
Mark Evanoff  
Marcus Ewert  
Ronald Fisher  
Michele Garside  
Keith & Susan Gilbert  
John & Mary Gill  
Sheila Gloss  
Karen Greig  
Ernest Grossman  
Scott Ferguson & Kate Hanson  
Gina & Steve Harris  
Julie Hébert  
Carol Henri  
Brian & Jocelyn Herndon  
Irene Hilgers  
Bill & Jadranka Hyatt  
Alex Ingersoll  
Ingrid Jacobson  
Christopher Jantzen &  
Denise Demoss  
Janet Johns  
Maggie Johnson  
Geoffrey Jue  
Mike Kaplan  
In memory of Jane Keller  
Nelda Kilguss  
Monica Kochanny  
Terri Kwiatek  
Richard & Ann Lanzerotti  
Roger Levy  
Antonia Lozon  
Carol Ludwig  
Stephanie Marshall &  
Charles F. Miller  
Ana Maria Martel  
Maria M. Meyer  
David Miller  
Scott & Sharon Miller  
Miriam Morgan  
Leslie Murdock & Kathleen Wall  
Steven Murray  
Kurt Nelson  
Lester Olmstead-Rose  
Damon Ott  
Jan Pardoe & Cathy McIntosh  
Sylvia Pascal  
Rebecca Pauling  
Carey Perloff  
Linda Pinkoski  
Marcia Popper  
Rose Mary Reed

Jon & Carol Richards  
Robert Ripps  
Launa Jill & Daniel A. Sanders  
Janine Scancarelli  
Carren Shagley  
Bill & Holly Shepard  
Randall Shields  
Andrea Shuel  
Janette Smith  
Dr. & Mrs. Samuel Sobol  
Holly Spalding  
Kate Stacy  
Carolynn & Anthony Tabacco  
Bruce Thompson  
Tito Torres  
Walker Foundation  
Rosalind Walrath  
Morey & Jonnie Weingarten  
Lawrence White  
Karen Wiel  
Janet & Art Wong  
Christine Silver  
Ingu Yun  
Michael Zarrella & Linda Ruggeri

**Advocate - \$100+**

Sy Aal  
Robert F. Adams  
Betsy Archer  
Myrna Aronoff  
Werner Bachmann  
Monya Baker & Erlanson Daniel  
Ann Bancroft  
Ittai Barekat  
Eve Barringer  
Michael Bauer  
Susan Bayer  
Suzanne Beim  
Judith Berling  
Gary & Elise Berticevich  
Gerald Besses  
Peter Bickel  
Gerry Blunt  
Jim & Arielle Bourgart  
Verne Brandt  
Warren & Judy Branzburg  
Joan Brennan  
Nancy & Pat Broderick  
Howard Brownstein  
Robert & Carin Bryans  
Morgan & Michael Callahan  
Russel Campbell  
James Campbell  
Margaret Carter  
Mauricio Cevallos  
Linda Chafetz  
Thompson Chambers  
David Chase  
Monica Choi  
Len Christensen  
Paula Clark  
Geoffrey Clarke  
Friend of Dorothy  
Renee Coleman

Rosemary Corbin  
Janice Cornwell  
Paula Cornyn  
Vivian Crisman  
William Cromartie, In memory of  
Julia Frazier Boyd  
Sandra Cronsberg, In honor of  
Alex Hurt  
Mary Crosby & Thomas Piazza  
Callie Crum  
M.K. & Katherine Davis, In  
memory of Terry Davis  
Carol Dean  
Gail Debellis  
Sharon & Mike Demere  
Peggy DeMouthe  
The Dhar Family  
Anne Dillon  
Charles Dorris  
Judith Duffy  
Susan & Jeff Dunn  
Jeanene Ebert  
Dr. Stephen & Linda Eckstone  
Herbert Elliott  
Karen Ens  
Suzanne & Allan Epstein  
Masha Farber, TheaterGames  
Doug Faunt  
Barbara Feduska  
Russ Ferreira  
Mitchell Field, In loving memory  
of Jackie Field  
Juon-Kin Fong  
Zachary Frangos  
Elsie Fraumeni  
Andrew Freeman  
Margaret Fuson  
Ann Garrett  
Olga Gary  
Stephen Geisheker  
William Giammona  
Russell Gill  
Robert & Jan Ginsberg  
Mitch Gitin  
Stephen Gong  
Kay Grace  
Anita Grandpre  
David Greenspan  
Anne Hallinan  
Charles & Kathryn Hardeman -  
Living Interiors Ltd  
Cyd Harrell  
Carol Hazenfield  
Zhen He  
Kayleigh Henson  
Rachel Hernandez Moller  
Donald Hesse  
George Heymont  
Betty Ho  
Sally Holland  
Vanessa Homewood  
Elizabeth Huchberger  
Carole Hughes  
June Hunt  
Helaine Isaacs



Sara Ivie  
Audrey Jackson  
Gary Jaffe  
Richard Jenny  
Mimi Jensen  
Janet Johnson  
John Johnson  
Melanie Jones  
Robert Kaiser  
Julie Kaufman  
Beryl Kay  
Elnora Ke  
Jennifer & Peter Keith  
John Kelley  
John Kemp & Mary L Brutocao  
Deb Kessler & Lou Michetti  
Betty Miller Kolotkin  
Robert Mascola &  
Jennifer Kopec  
Louis Kravitz & Charles Lagrave  
Astrid Lactis  
Annette Lai  
Mark Rubenstein &  
Yvonne LaLanne  
Stephen Laruccia  
Carol Lashman  
Calvin Lau & Charles Bush  
Ron & Lynn Laupheimer  
Forrest Laureano  
Brandon Lee  
Karen & Keith Lee  
Hoyle Leigh  
Lawrence Livermore Laboratory  
Siu Ma  
Mabel Ng  
Gail MacGowan  
Dolores MacKinnon  
Deepti Madathany  
Bill Madison  
Mark Maigatter  
Mare & Paul Manangan  
Laura Marlin  
Rebecca Martinez  
Maddy McBirney  
Janet Mcandless  
Christopher McCormick  
Sheila McCormick  
Karesha Mcgee  
Ricki & Doug McGlashan

Jacqueline McMahan  
David Mellor  
Henry Milich  
Jeanne Milligan  
Jacqueline Minor  
Leslie Morelli  
Paul Munro  
Calvin Murashige  
Dawn Nakashima  
Kurtis Nelson  
Russell Nelson  
Mark Oliver  
Steven Ortega  
David Pasta  
Christine Patch-Lindsay  
Joel Paul  
Lucy Perdichizzi  
Melissa Perez  
Marie-Noelle & Greg Phillips  
Bob & Bob Pinder  
Dianna & Dan Pisano  
Mary Powell  
David Rachleff  
Norma Randig  
Mike & Kathy Ransom  
James Rattner  
Gail Reed  
Gordon & Susan Reetz  
Dave & Carmelle Reiser  
Janice Richard  
Ascend Real Estate  
Murphy & Wayne Robins  
Susan Rosen  
Fred Rosenblum  
Diane Ross  
Rhea Rubin  
John Ruskin  
Mike & Cullynn Russell - Vaeth  
Diane Sampson  
Michael & Maureen Samson  
Karen Turner Sanford  
Carol Savary  
Laurel Schaefer-Trent  
Emily Schaeffer  
Ellen Schell  
Eva Schlesinger  
Roger Schrag  
Penny Schreiber  
james Seff

Dennis Setlock  
Jeremy Siegel  
Sheila Simon  
Stephen Skedzielewski &  
Connie Howe  
Montgomery Slatkin  
Pam Smith  
Thomas & Lucy Sponsler  
Judith Stacey  
Michael Steel & James Coletti  
Scott Strohane  
Nancy Sturm & Robert Love  
Gilda Sullivan, In honor of  
Karen Sullivan & Ken Mitchell  
Robert Sullwold  
Lucille Sutton  
Betty Taisch  
Judith Teichman  
Bill Tiedeman  
Dana Tom & Nancy Kawakita  
Ivan Tou  
Gretchen Trabant  
Karen Traister  
Kathryn Traynor  
Alyson Tufts  
Nancy Turak  
Gloria Upchurch  
Mike & Cullynn Russell - Vaeth  
Linda Vallee  
Thomas Varner  
Jim & Gay Versteeg  
Mark Viviano  
Gretchen Vonderueing  
Pier Voukos  
Charles Wagner  
Breena Walton  
Kimberly Mark Webb  
Frances Whelan & Thomas Ryan  
David Wilmore  
Barbara Wong  
Ben Wong  
William Woods  
Dennis Wulkan  
Akiyo Yokoi  
Shanna Yonenaka  
Norman & Lucille Zilber  
Linda Zimmerman

# RISING STARS

Rising Stars are the future movers and shakers of the American theatre. They are high school students who are also actors, directors, writers, and designers. They are dreamers and doers, and their journey is made possible by heroes like you. For only \$150 you can sponsor four tickets for local Rising Star students to see four plays at San Francisco Playhouse. Visit us online today and join the heroes below!

Anonymous	Lynn Fonfa	Ron Morrison
Ken Larson & Linda Adams	Elsie Fraumeni	Kenneth Noyes
Werner Bachmann	William Giammona	Jan & Howard Oringer
Eve Barringer	Sheila Gloss	Thomas Owen
Kristin Bass	Gail Hamilton	Christine Patch-Lindsay
Lynda Beigel	Irene Hilgers	James Rattner
Sandra Blair & Carol Cohen	Joan Huff	Phyllis & Jerry Rosenberg
Linda Brewer	Nancy Igdaloff	Mike & Cullynn Russell - Vaeth
Mike Crosby & Marsha Brown	Margaret Ippolito	Frances Whelan & Thomas Ryan
Vivian Brown	Gary Jaffe	Sheila Simon
Morgan & Michael Callahan	Richard Jenny	Mike Smith
Suzanne & Dan Carroll	John Johnson	Thomas Sponsler
Mauricio Cevallos	Robert Kaiser	Michael Steel
Thompson Chambers	Mike Kaplan	Karen Sullivan
Lily Chow	Beryl Kay	Bill Tiedeman
Len Christensen	Nancy Thompson & Andy Kerr	Elizabeth Werter & Henry Trevor
Paula Clark	Nelda Kilguss	Jim Turner
Renee Coleman	Carol & Duff Kurland	Misty Tyree
Sheila Dalton	Yvonne LaLanne &	Kris Vecere
Anne Dillon	Mark Rubenstein	Jim & Gay Versteeg
Charles Dorris	David Madfes & Judith Leash	Morey & Jonnie Weingarten
Susan Dunn	Tom & Stephanie Lima	David Wilmore
Helene & Larry Edelman	Ann Ludwig	Betty Yalich
Paul Feasby	David May & Susan Carluen May	
Barbara Feduska	Tanya Slesnick	

# LEGACY CIRCLE DONORS

We gratefully acknowledge the following patrons for making a legacy commitment to San Francisco Playhouse. Please remember us in your will and trusts.

## Gifts Received from the estates of:

Nancy Blair (In Memoriam)/The  
Estate Of Nancy Blair  
Gretchen Saeger  
The Estate Of Patty Wilkerson  
John A. Williams  
Gerhard Woelke  
Delphine Zeuli

## Gifts Designated

William & Marsha Adler  
Paul Asente & Ron Jenks  
Susan Atherton  
Nancy Axelrod  
Robert H. Beadle  
Linda Brewer  
Agnes Chen Brown, In Memory  
Of Robert Elliott Brown  
Sharon & Dennis Clisham  
Joan Eckart  
Greg Gorel  
William J. Gregory  
Jeannene Hansen  
Mr. Robert Hulteng  
Geoffrey Jue

John & Catherine Kalin  
Fred Karren, In loving memory of  
Beth Karren  
Nancy Thompson & Andy Kerr  
Helen E. Land  
Susan Ledford  
Andrew Maguire & Doug Cyr  
Rebecca Martinez  
Jackie And Richard Mayer  
The Eddie Reynolds and  
Hernán Correa Family Fund  
Dana and Gary Shapiro  
Kevin Shoemaker  
John Steinfirsh & Sharon Collins  
Linda Vallee  
Michael B. Wisper

**Join the Legacy Circle today!** Share your passion for intimate theatre with generations to come. Planned giving allows you to designate a portion of your estate to provide long-term stability to our mission and serve future generations. It may provide you with substantial tax advantages and even income during your lifetime. Please call 415.866.8907 or email [development@sfplayhouse.org](mailto:development@sfplayhouse.org) or for more information.

# GIVE THE BEST GIFT OF THEATRE



**4-PLAY GIFT FLEXPASS  
NOW AVAILABLE**

**\$180 for 4 Tickets**  
*(limited time!)*

**VISIT [SFPLAYHOUSE.ORG/GIFT](https://sfplayhouse.org/gift)  
OR PURCHASE TODAY AT THE  
PLAYHOUSE BOX OFFICE.**

*Scan the QR code to give  
the best gift this year!*



## My Home on The Moon

By Minna Lee  
Directed by Mei Ann Teo

1.25.24 - 2.24.24

SCI-FI • COMEDY • WORLD PREMIERE



## The 39 Steps

Adapted by Patrick Barlow  
From the novel by John Buchan  
Directed by Susi Damilano

3.7.24 - 4.20.24

COMEDY • MYSTERY • FARCE



# STILL TO COME IN OUR 2023/2024 SEASON

## The Glass Menagerie

By Tennessee Williams  
Directed by Jeffrey Lo

5.2.24 - 6.15.24

CLASSIC • DRAMA • AWARD-WINNING



## Evita

Lyrics by Tim Rice  
Music by Andrew Lloyd Webber  
Directed by Bill English

6.27.24 - 9.7.24

MUSICAL • CLASSIC • AWARD-WINNING



SAN FRANCISCO  
**PLAYHOUSE**

TICKETS AND SUBSCRIPTIONS  
**SFPLAYHOUSE.ORG**  
**(415) 677-9596**