

BY ARRANGEMENT WITH **FIERY ANGEL LIMITED**



**THE**

**30**

**STEPS**

ADAPTED BY **PATRICK BARLOW**

FROM THE NOVEL BY **JOHN BUCHAN**

FROM THE MOVIE BY **ALFRED HITCHCOCK**

LICENSED BY ITV GLOBAL ENTERTAINMENT LIMITED

FROM AN ORIGINAL CONCEPT BY **SIMON CORBLE & NOBBY DIMON**

DIRECTED BY **SUSI DAMILANO**

**SAN FRANCISCO**

**PLAYHOUSE**

**EXECUTIVE PRODUCERS**

FRED L. KARREN

PHYLLIS & JERRY

ROSENBERG

# BOARD OF DIRECTORS

President ..... William Adler  
Nancy K Austin  
Bobak Bakhtiari  
Linda Brewer  
Andre Glenn Chenoweth  
Susi Damilano  
Bill English  
Margot Golding  
William J. Gregory  
Elizabeth Groenewegen  
Mr. Robert Hulteng  
Jacqueline Kubicka  
Jennifer S. Lindsay  
Samuel Muir  
Betty Nakamoto  
Howard Oringer  
Louis Parnell  
Jeffrey Pfeffer  
Phyllis Rosenberg  
Frances Schendle  
Dana Shapiro  
Margaret Sheehan  
Michael Torres

Fred L. Karren  
Janet McAllister  
*In Memoriam*

## Land Acknowledgment

We acknowledge that the land on which we gather belongs to the Ohlone people of past, present, and future, whose homelands extend from Big Sur to the San Francisco Bay Area. We recognize that every member of the Bay Area community has, and continues to benefit from, the use and occupation of this land. We recognize that the Ohlone people are alive and flourishing members of the Bay Area communities today. We are grateful for the opportunity to live, work, and learn on their land. Visit [sfplayhouse.org/edi](http://sfplayhouse.org/edi) for more information.

### SAN FRANCISCO PLAYHOUSE

450 Post Street, San Francisco, CA 94102  
415-677-9596 • [www.sfplayhouse.org](http://www.sfplayhouse.org)  
[info@sfplayhouse.org](mailto:info@sfplayhouse.org)

# PRODUCTION SPONSORS

## Producers

### Executive Producers

Fred L. Karren, in Memoriam  
Phyllis & Jerry Rosenberg

### Producers

Clay Foundation–West  
Dana & Gary Shapiro

### Associate Producers

Tom & Stephanie Lima  
Samuel & Sharon Muir  
Tim & Lyn Potter  
Nancy Thompson & Andy Kerr  
Keith Goldstein & Donna Warrington

## Artistic Underwriters

### Scenic Designer

John Steinfirst

### Costume Designer

Jenn & David Stringer

### Properties Designer

Susan Ledford

# WELCOME



From the back seat of my parents' Country Squire station wagon, I watched Cary Grant dodge a crop-duster and hang off Mount Rushmore in **North by Northwest** at the local drive-in theatre and my life-long love of Alfred Hitchcock was born. It was cemented years later, while working a graveyard shift summer job at a state mental hospital, by watching twenty Hitchcock films in a summer-long late-night television film festival. Discovering **The 39 Steps** decades later has put the icing on the cake.

Adapted by Patrick Barlow from the 1915 novel by John Buchan and the 1935 Alfred Hitchcock film, **The 39 Steps**

World War II in England, it details the adventures of Richard Hannay, a dapper but clueless everyman who becomes caught up in a spiraling intrigue. Barlow has brilliantly condensed the original novel and film into a breakneck-paced tour de force for four actors to play over 150 roles. Each performer skillfully jumps between characters with lightning speed, serving as a tribute to the versatility of the actors.

Filled with sight gags, puppetry, slapstick and meta-theatre, using ordinary props to create multiple locations, and employing classic clowning techniques, **The 39 Steps** also serves as a great showcase for directors, choreographers, lighting designers, and sound designers. It is an affectionate tribute to the spy thriller genre, as well as a playful satire of its clichés. Through its scintillating dialogue and tongue-in-cheek references to classic spy films, the play both celebrates and parodies the genre, inviting audiences to revel in its absurdity and poke fun at its stereotypes.

As with so many films from the noir genre that Hitchcock set in motion, we are presented with a protagonist who is alienated from himself and others, and whose ennui prevents him from having empathy for anyone else. His journey takes him out of alienation toward a capacity for compassion, but the greatest power of **The 39 Steps** comes from its ability to appeal to such a wide audience, regardless of age or culture. With its universal themes of adventure, romance, and heroism, the play has staked out its own place as a thrilling roller coaster ride of laughter, suspense and sheer theatrical virtuosity.

## Bill English

*Artistic Director*

## OUR MISSION

*Our mission is to share stories that uplift spirits, deepen self-awareness, and nurture compassionate community. Our theater is an Empathy Gym where we come to practice our powers of compassion. Here, safe in the dark, we can risk sharing in the lives of the characters. We feel what they feel, fear what they fear, and love what they love, and as we walk through our doors we take with us greater powers of understanding to make our community a better place, one play at a time.*

**SAN FRANCISCO PLAYHOUSE**

**BILL ENGLISH**, Artistic Director, **SUSI DAMILANO**, Producing Director,  
and **FRED L. KARREN** and **PHYLLIS & JERRY ROSENBERG**, Executive Producers,  
present

By arrangement with FIERY ANGEL LIMITED

**THE 39 STEPS**

Adapted by **PATRICK BARLOW**

From the novel by **JOHN BUCHAN**

From the movie by **ALFRED HITCHCOCK**

Licensed by **ITV Global Entertainment Limited**

From an original concept by **SIMON CORBLE** and **NOBBY DIMON**

Directed by **SUSI DAMILANO**

**Creative Team**

Scenic Designer  
**HEATHER KENYON**<sup>^</sup>

Costume Designer  
**ALICE RUIZ**

Lighting Designer  
**DEREK DUARTE**<sup>^</sup>

Sound Designer  
**DAN ALVARO HOLLAND**

Properties Designer  
**BLUE HEPHAESTUS**

Wig Designer  
**LAUNDRA TYME**

Dialect Coach  
**KIMBERLY MOHNE HILL**

Puppet Consultant  
**FRED C. RILEY III**

Intimacy, Fight & Movement Director  
**CHELSEA PACE**

Casting Director  
**DORI L. JACOB, CSA, Casting Collective**

Casting Associates  
**RÉAL VARGAS ALANIS, KIERAN BECCIA**  
*Casting Collective*

**Cast** (in alphabetical order)

Clown ..... **GREG AYERS\***  
Annabella Schmidt/Pamela/Margaret, *Fight Captain* ..... **MAGGIE MASON\***  
Clown ..... **RENEE ROGOFF\***  
Richard Hannay ..... **PHIL WONG\***

**Understudies** (in alphabetical order)

Clown ..... **ANNIE DICK**  
Clown ..... **ANTHONY DOAN**  
Richard Hannay ..... **ADAM GRIFFITH**  
Annabella Schmidt/Pamela/Margaret..... **ADRIA SWAN**

Understudies never substitute for the listed performers  
unless a specific announcement is made at the time of the performance.

**Stage Management**

Stage Manager ..... **SARAH MARIE SELIG\*** [Through 3.31.24]  
Stage Manager ..... **ALICIA LERNER\*** [4.01.24-4.20.24]  
Assistant Stage Manager..... **SASHA KING**  
Production Assistants ..... **KAMARIA ATIBA, SAM HATTERSLEY**

The original London production, directed by Maria Aitken, designed by Peter McKintosh, with lighting designed by Ian Scott, sound designed by Mic Pool, and movement directed by Toby Sedgwick, opened at the Tricycle Theatre (now known as Kiln Theatre) in Kilburn in August of 2006 and transferred to the Criterion Theatre in the West End on 14th September, 2006, and subsequently to the American Airlines Theatre on Broadway on 15 January, 2008. The original production was directed by Fiona Buffini. This production is licensed and the film is distributed by ITV Global Entertainment Ltd.

## Production Team

Production Manager .....	ANGELA KNUTSON
Technical Director .....	TISH LEUNG
Assistant Technical Director .....	ARIAN GRIMSRUD
Production Coordinator .....	SARAH SELIG
Costume & Properties Coordinator .....	LEX NOSEWORTHY
Master Electrician .....	LIZ KRETER-KILLIAN
Scenic Charge Painter .....	CAYLA RAY-PERRY
Shop Carpenters .....	KEVIN O'SHAUGHNESSY YOUSSEF RIAHI
Light Board Programmer .....	LIZ KRETER-KILLIAN
Audio Supervisor .....	JAMES ARD
Production Associate .....	JOEL MOORE
Carpenters .....	ALEX BRUMFIELD MAX CARPENTER BECCA SALSBURG-FRANK JOSHUA GRAVES CHRISTY RAMIREZ JIM WILSON
Electricians .....	SHY BANIANI, NIKOLA CAPP INÉZ NUÑEZ DE ARCO, SAM FEHR, MARGARET LINN, RILEY RICHARDSON, TAYLOR RIVERS, KRYS SWAN BEN VISINI
Painter .....	KENZIE BRADLEY
Pre-Production & Production Photographer .....	JESSICA PALOPOLI
Trailer Videographer .....	ADAM ELDER MONTANARO
Key Art Designer .....	LENA SEMENKOVA
Playbill Publisher .....	THIRD ACT SERVICES
Publicists .....	CARLA BEFERA, LAUREN GOLDFARB

## Special Thanks

Cassidy Jamahl Brown, Michael Cazares, Russ Stanaland,  
Westlake School for the Performing Arts,  
Actors' Equity Association, and the staff of the Kensington Park Hotel.

This production is dedicated to the late FRED L. KARREN, Executive Producer.

\* Member of Actors' Equity Association. This theater operates under an agreement with Actors' Equity Association, the Union of Professional Actors and Stage Managers in the United States.



^ Member of United Scenic Artists, Local USA 829 of the International Alliance of Theatrical Stage Employees.



THE VIDEOTAPING OR MAKING OF ELECTRONIC OR OTHER AUDIO AND/OR VISUAL RECORDINGS OF THIS PRODUCTION AND DISTRIBUTING RECORDINGS OR STREAMS IN ANY MEDIUM, INCLUDING THE INTERNET, IS STRICTLY PROHIBITED, A VIOLATION OF THE AUTHOR(S)'S RIGHTS AND ACTIONABLE UNDER UNITED STATES COPYRIGHT LAW. FOR MORE INFORMATION, PLEASE VISIT <https://concordtheatricals.com/resources/protecting-artists>

The performance lasts approximately one hour and forty-five minutes. There is one intermission.

Performance Dates: March 7 – April 20, 2024  
Playbill content current as of March 4, 2024.

Please visit [sfplayhouse.org/playbill](https://sfplayhouse.org/playbill)  
for the most current version of our  
digital playbill or scan this QR code.



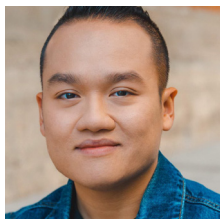
# BIOGRAPHIES



GREG AYERS



ANNIE DICK



ANTHONY DOAN



ADAM GRIFFITH



MAGGIE MASON



RENEE ROGOFF



ADRIA SWAN



PHIL WONG

## CAST

### GREG AYERS\*

#### Clown

Greg (he, him) is ecstatic to be back performing at San Francisco Playhouse where he recently played Mr. Green in **Clue**. Other notable credits here include **Significant Other, in a word**, and **Noises Off**. Greg is a company member at Ferocious Lotus Theatre Company, where he received the TBA Award for outstanding performance in **Two Mile Hollow**.

### MAGGIE MASON\*

#### Annabella Schmidt/Pamela/Margaret, Fight Captain

Maggie (she, her) is so happy to be working on this wonderful production and to be back at San Francisco Playhouse. She performed here in **Jerusalem** and **Period of Adjustment**, both directed by Bill English. Recent credits include **The Play That Goes Wrong** (San Jose Stage Company), **The Half-Light** (Portland Stage Company), **Birthday Candles** by Noah Haidle (Chautauqua Theater Company, directed by Vivienne Benesch), **A Christmas Carol** (Trinity Repertory Company), and **Discus** (Hunger & Thirst Theatre in New York). Bay Area credits include Berkeley Repertory Theatre, TheatreWorks Silicon Valley, Magic Theatre, Aurora Theatre Company, San Jose Stage Company, Central Works Theater Company, Center REpertory Company, San Francisco Mime Troupe, Town Hall Theatre Company, the San Francisco Shakespeare Festival, and Pacific Repertory Theatre. Maggie earned an MFA from Brown University/Trinity Repertory Company. "Love to MT for making this all possible."

### RENEE ROGOFF\*

#### Clown

Renee (she, they) is delighted to be back at San Francisco Playhouse. Theatre credits include Mrs. White in **Clue** (San Francisco Playhouse), understudy for Bernadette and Jean in **POTUS** (Berkeley Repertory Theatre), Alice Paul in **Strange Ladies** (Central Works Theatre Company), Josie in **A Moon for the Misbegotten** by Eugene O'Neill (Roustabout Theater), and Ellen, Mrs. Saunders, and Lin in **Cloud 9** and Hannah in **When We Were Young and Unafraid** (Custom Made Theatre Company), for which she received the San Francisco Bay Area Theatre Critics Circle award for Best Featured Performance in a play and a BroadwayWorld nomination for best featured performance. Renee recently played Tracy in the major motion picture **Asian Persuasion** which will be released in 2024. She is an alumna of The Lee Strasberg Studio, the Stella Adler Studio of Acting, Repertory Philippines, and the American Academy of Dramatic Arts. "For Matty." @renee.rogoff

### PHIL WONG\*

#### Richard Hannay

Phil (he, him) is a multi-hyphenate artist from Oakland, a.k.a. xučyun, the unceded ancestral lands of the Chochenyo-speaking Ohlone People. Recent regional credits include Duch in the national tour of **Cambodian Rock Band** (A Contemporary Theatre in Seattle), Louis in **Revenge Song** (Oregon Shakespeare Festival), and guest artist in the Tony Award winning national tour of **Freestyle Love Supreme**. Local credits include American

Conservatory Theater, TheatreWorks Silicon Valley, California Shakespeare Theater, the San Francisco Shakespeare Festival, Z Space, Word for Word Performing Arts Company, Shotgun Players, Bay Area Children's Theatre, EXIT Theatre, Lamplighters Music Theatre, Killing My Lobster, Hillbarn Theatre, Los Altos Stage Company, Palo Alto Players, and Ray of Light Theatre. He is a graduate of Oberlin College and received his physical theatre training at the Accademia dell'Arte in Arezzo, Italy. Along with Dan Wolf, Phil co-founded Bay Area Theatre Cypher, a collective of local hip-hop theatre artists. @phillywongsteak

## UNDERSTUDIES

### ANNIE DICK

#### Clown

Annie is so excited to return to San Francisco Playhouse for her second production! A dancer, singer, voice actor, and massive nerd, her Playhouse debut occurred last season in *As You Like It*. Other recent credits include Rose in *The Speakeasy* (Boxcar Theatre), Jessica in *Let's Kill Jessica* and Loretta Wayfair in *The Path* (Awesome Theatre), and Fanny Allen in the West Coast premiere of *Nevermore: The Imaginary Life and Mysterious Death of Edgar Allen Poe* (Green Valley Theatre Company). "Shout out to my parents for always supporting me through the ups and downs of being an artist, my friends for always being there whether on stage with me or in the audience, and my two cats for just being their crazy, adorable selves." [anniemariedick.wixsite.com](http://anniemariedick.wixsite.com) | @annie\_banannie\_

### ANTHONY DOAN

#### Clown

Anthony (he, they) is delighted to make his San Francisco Playhouse debut. They are a queer, first-generation Vietnamese American theatre artist currently based in the Bay Area. Notable acting credits include Nguyễn, Quang, and Sam in the world premiere of *Colonialism is Terrible, But Pho is Delicious* (Aurora Theatre Company, Oregon Contemporary Theatre), Celia, Adam, and Phebe alternate in *As You Like It* (San Francisco Shakespeare Festival), Christian in *Cyrano de Bergerac: A Queeroid Comedy* (Island Shakespeare Festival), understudy for the Playwright and Nhan in *Vietgone* (City Lights Theater Company), and John Lee in *Porcelain* (Brown Bag Theatre Company). Anthony strives to viscerally entertain and challenge audiences, provoke political thoughts, and inspire people to empathetically listen to the world in a different vibration. @theanthonydoan

### ADAM GRIFFITH

#### Richard Hannay

Adam was born and raised in the Bay Area, though his career has taken him everywhere from New York City to Shanghai. Credits include multiple characters in *Sleep No More* (Punchdrunk, New York and Shanghai), the motion capture performer in the immersive one-man adaptation of *A Christmas Carol* titled *Chained* (Future of StoryTelling's Story Arcade), and *Alone* (Rabbit Hole Ensemble). Film credits include acting and directing with independent companies in New York City, appearances on HBO, and working with Wong Kar-wai in Shanghai. When not acting, Adam is a teacher and forever freelance artist finding creative ways to continue doing what he loves. He earned a BFA in theatre performance from Hofstra University and studied with The Barrow Group, the Heidi Marshall Studio, and the New York Conservatory for Dramatic Arts. @adamlukegriffith

### ADRIA SWAN

#### Annabella Schmidt/Pamela/Margaret

Adria is delighted to return to San Francisco Playhouse after performing here in last season's production of *A Chorus Line*. She most recently performed in the world premiere musical *Who's Got Me?* (Jewel Theatre Company, Santa Cruz). Other recent credits include *The 25th Annual Putnam County Spelling Bee* (Contra Costa Musical Theatre), *How to Succeed in Business without Really Trying* (Connecticut Repertory Theatre), *Cats* (Clinton Area Showboat Theater), and *Snoopy!* (Theatre Under the Stars, Houston). Adria also spent two years sailing the globe as a principal singer aboard Holland America Line cruise ships. She is a San Francisco-based performer, choreographer, and dance teacher who earned a BFA in musical theatre from Texas State University. "For Wheat."

## AUTHORS

### PATRICK BARLOW

#### Author, Adaptation

Besides his version of Lew Wallace's *Ben-Hur: A Tale of the Christ*, Patrick Barlow's Olivier-nominated adaptation of *A Christmas Carol* has played Off-Broadway and on London's West End, while his four-person adaptation of *The 39 Steps* has played in over forty countries worldwide, winning Olivier, Helpmann, Moliere, and Tony awards, and making Patrick the most performed playwright in America for the 2012/2013 season. Most recently, his rewriting of John Milton's *Comus* has played to critical acclaim at Shakespeare's Globe Theatre. Patrick is also celebrated in the UK for his two-man theatre company National Theatre of Brent, whose

comedy epics include Wagner's *Ring Cycle*, *The Charles and Diana Story*, *The Messiah*, *The Wonder of Sex*, *The Arts and How They Was Done*, *The Black Hole of Calcutta*, *The Life and Times of the Dalai Lama* and *Zulu!* They have won two Sony Gold Awards, a Premier Ondas Award for Best European Comedy, and the New York Festival Gold Award for Best Comedy. Screenwriting credits include *Van Gogh* (Prix Futura Berlin Film Festival), *Revolution!!* (Best Comedy, Jerusalem Film Festival) and the BAFTA-winning *The Young Visitors*. Publications include *Shakespeare: The Truth!* and *The Complete History of the Whole World*. As an actor, Patrick has performed in *Absolutely Fabulous*, *Shakespeare in Love*, *Notting Hill*, *Nanny McPhee* and *Bridget Jones's Diary*. He is currently writing theatre versions of *The Hound of the Baskervilles* and *Dracula*.

## JOHN BUCHAN

### Author, Original Novel

John managed to juggle an extremely successful career as a writer with a even more successful career as a politician and diplomat. In 1935, the same year his perennial classic *The Thirty-Nine Steps* was adapted for film by Alfred Hitchcock, he was appointed Governor General of Canada. He died five years later, leaving behind over one hundred published books, including novels, poetry and short story collections, and biographies.

## CREATIVE TEAM

### SUSI DAMILANO

#### Director

Susi (she, her) is co-founder and producing director of the San Francisco Playhouse. She is a five-time recipient of the Excellence in Theatre Award for Principal Actress in a Play from the San Francisco Bay Area Theatre Critics Circle for the Playhouse productions of *Abigail's Party*, *Harper Regan*, *Bug*, *Six Degrees of Separation*, and *Reckless*. Susi has also performed leading roles here in *Heroes of the Fourth Turning*, *Yoga Play*, *The Effect*, *The Roommate*, *Red Velvet*, *Tree*, *Bauer*, *Abigail's Party*, *Harper Regan*, *Coraline*, *Slasher*, *One Flew Over the Cuckoo's Nest*, *Landscape of the Body*, *First Person Shooter*, *Jesus Hopped the 'A' Train*, *The Crucible*, *Kimberly Akimbo*, *Our Town*, and *The Smell of the Kill*. Directing credits include Playhouse productions of *Clue*, *Indecent*, *Twelfth Night*, *Groundhog Day*, *The Musical*, *Cabaret*, *Mary Poppins*, *Noises Off*, *She Loves Me*, *Stage Kiss*, *Company*, *Stupid Fucking Bird*, *Into the Woods*, *A Behanding in Spokane*, *Den of Thieves*, and *Wirehead* (SFBATCC nomination), the West Coast premieres of *Honey Brown Eyes* (SFBATCC nomination), *Dead Man's Cell Phone*, *Coronado*, *The Mystery Plays*, and *Roulette*, and

the world premieres of *On Clover Road* by Steven Dietz, *From Red to Black* by Rhett Rossi, and *Seven Days* by Daniel Heath in the Sandbox Series.

## CASTING COLLECTIVE

### Dori L. Jacob, CSA

### Réal Vargas Alanis

### Kieran Beccia

The Casting Collective is a team of casting directors with extensive experience and deep ties to the Bay Area theatre community. They have created and maintain the most comprehensive, regularly updated local talent database in the region. Casting locally is the predominant practice of the Collective. In the wake of the pandemic and the massive national call for greater EDI representation and prioritization, regional theatre has fundamentally changed. The Casting Collective is a response to this call for change in the way theatres access, promote, and hire artists, in order to foster an anti-racist, inclusive, collaborative future. Their purpose is to advance the interests of local actors and encourage institutions to explore, engage with, and hire from within this community instead of searching elsewhere for their talent.

[castingcollective.org](http://castingcollective.org)

## DEREK DUARTE

### Lighting Designer

Derek has designed for companies across the US, including Berkeley Repertory Theatre, San Jose Repertory Theatre, California Shakespeare Theater, Milwaukee Repertory Theater, The Western Stage, Asolo Repertory Theatre, Syracuse Stage, Cleveland Play House, American Musical Theatre of San Jose, and the Oregon Shakespeare Festival. He was resident lighting designer at American Conservatory Theater for seven years and designed over sixty productions for the company. Derek has received multiple awards for his work, including the Drama-Logue Award, Dean Goodman Choice Award, San Francisco Bay Area Theatre Critics Circle award, and the TBA Award. He earned a BA from the University of California, Berkeley and an MFA in theatre technology from the University of California, Los Angeles. Derek is a senior lecturer at Santa Clara University.

## BLUE HEPHAESTUS

### Properties Designer

Blue Hephaestus (she, her) is a multidisciplinary builder-fixer of things, including prop making, set building, electrical wiring, electronics fixing, and software engineering. She works in a litany of fields, never satisfied with only one project and constantly looking for new things to explore, learn, and tinker with. She started in theater at *TerrorVault: The*



**Initiation**, building and repairing haunted house props and sets during shows, and quickly fell in love with the work. She branched out to apply the rest of her skills, building out the electrical setup for *A/V* at Eclectic Box SF, and joined the carpentry and electrical team at San Francisco Playhouse for ***Guys and Dolls*** and ***My Home on the Moon***. She is the properties designer for ***The 39 Steps***, and will be doing the same for ***Evita*** here this summer as well as set building and design for ***TerrorVault*** in the fall of 2024.

## KIMBERLY MOHNE HILL

### Dialect Coach

Kimberly has coached over 150 productions for companies including San Francisco Playhouse, American Conservatory Theater, TheatreWorks Silicon Valley, Berkeley Repertory Theatre, Arizona Theatre Company, City Lights Theater Company, Aurora Theatre Company, Hillbarn Theatre, and San Jose Stage Company. She is thrilled to return to the Playhouse after dialect coaching here for ***Guys and Dolls***, ***Clue***, ***Indecent***, ***Cabaret***, ***Noises Off***, and ***Yoga Play***. Kimberly is a professor of acting, voice, and speech and current chair of the Department of Theatre and Dance at Santa Clara University. In addition, she was recently designated as a certified Patsy Rodenburg Associate in the field of voice, speech, and presence training.

## DAN ALVARO HOLLAND

### Sound Designer

Dan (he, him) is a San Jose-based sound designer-technician and production manager. Past credits include production manager for ***The Language of Wild Berries*** (Golden Thread Productions), audio engineer for ***Fun Home*** and ***Miss You Like Hell*** (City Lights Theater Company), and sound designer for ***The Jungle Book: Rudyard Revised*** (EnActe Arts), ***As Soon As Impossible*** (Stanford University Theater & Performance Studies Department), and ***Songs for a New World*** (Sunnyvale Community Players). He is the A/V technician at City Lights Theater Company and earned a BA in theater and performance studies from Stanford University.

## HEATHER KENYON<sup>A</sup>

### Scenic Designer

Heather (she, her) is a Bay Area scenic designer. Previous scenic designs for San Francisco Playhouse include ***Guys and Dolls***, ***A Chorus Line***, ***Clue***, ***As You Like It***, ***Follies***, ***Twelfth Night***, ***Starting Here***, ***Starting Now***, ***The Fit***, and ***Washed Up on the Potomac***. She designed lighting for the Playhouse productions of ***Heroes of the Fourth Turning***, ***Songs for a New World***, ***I Was Right Here***, ***Art***, and ***Hold These***

***Truths***. Additional scenic design credits include ***The Code*** and ***Ti-Jean and His Brothers*** (Young Conservatory and MFA programs at American Conservatory Theater), ***American Hero*** and ***Cloud 9*** (Custom Made Theatre Co.), ***Men on Boats*** (Palo Alto Players), and ***The Book of Will*** and ***By the Way, Meet Vera Stark*** (Santa Clara University). She has also worked with TheatreWorks Silicon Valley, Aurora Theatre Company, Ballet San José, CMT San José, South Bay Musical Theatre, and WVLO Musical Theatre Company. Heather holds an M.F.A. from San Francisco State University, teaches scenic design at Santa Clara University, and is a proud member of United Scenic Artists, IATSE Local USA 829. [heatherkenyon.net](http://heatherkenyon.net)

## ALICIA LERNER<sup>\*</sup>

### Stage Manager

[4.01.24–4.20.24]

Alicia is excited to return to San Francisco Playhouse. She was stage manager here for productions of ***La Cage Aux Folles***, ***Noises Off***, and ***The Christians***. Other recent credits include ***Mame*** (42nd Street Moon), ***Tina: The Tina Turner Musical*** (National Tour – San Francisco), ***In the Heights***, ***A Christmas Carol***, ***Clue***, ***Always... Patsy Cline***, and ***Our Town*** (Center REpertory Company), ***Paradise Blue*** and ***Stoop Stories*** (Aurora Theatre Company), and ***The Little Mermaid*** and ***Meet Me in St. Louis: A Live Radio Play*** (Sierra Repertory Theatre). She earned a BFA in media-film studies from the University of California, San Diego and is a proud member of Actors' Equity.

## CHELSEA PACE

### Intimacy, Fight & Movement Choreographer

Chelsea (she, her) worked on Broadway with ***A Strange Loop***, ***Leopoldstadt***, and ***K-POP***. Off-Broadway credits include ***Snatch Adams & Tainty McCracken Present It's That Time of the Month***, ***Public Obscenities***, ***HELP***, and ***Bundle of Sticks***. Selected regional credits include, ***Big Data*** (American Conservatory Theater), ***SUMO*** and ***As You Like It*** (La Jolla Playhouse), ***POTUS: Or, Behind Every Great Dumbass Are Seven Women Trying to Keep Him Alive*** (Berkeley Repertory Theatre), ***1984*** and ***Born with Teeth*** (Aurora Theatre Company), ***The Bridges of Madison County***, ***Into the Woods***, ***Rent***, and ***Detroit '67*** (Signature Theatre), ***Incendiary*** and ***A Strange Loop*** (Woolly Mammoth Theatre Company), ***Fun Home***, ***John Proctor is the Villain***, and ***White Noise*** (Studio Theatre), ***Midsummer*** (Folger Theatre), ***The Tattooed Lady*** (Philadelphia Theatre Company), and the upcoming productions of ***A Strange Loop*** (American Conservatory Theater) and ***Hair*** (Signature Theatre). Selected film and television

credits include *The Tender Bar*, *Drive-Away Dolls*, *American Sports Story*, *A League of Their Own*, *Harlem*, *Ramy*, *The Best Man: The Final Chapters*, *Wu-Tang: An American Saga*, and *Dr. Death*. She is the founder of Open Intimacy Creatives and co-founder of Theatrical Intimacy Education. Chelsea has written *Staging Sex: Best Practices and Tools for Theatrical Intimacy* (Routledge), *The Certification Question* (The Journal of Consent-Based Performance). She is a recipient of the Kennedy Center Gold Medallion. [chelseapace.com](http://chelseapace.com) | [@professorpace](mailto:@professorpace)

## FRED C. RILEY III

### Puppet Consultant

In 2023 Fred was associate puppet designer of Toto for *The Wizard of Oz* (American Conservatory Theater), puppet designer and trainer for *Wolf Play* (Shotgun Players), and puppet coordinator, performer, and puppet fabricator for *Sojourner ZY* (Shadowlight Productions). Fred has worked and toured in the US and internationally. He cast and trained puppeteers in Japan and choreographed puppets for *Kwadan* and *Obon* (Ping Chong). He was assistant director and performer on the 2019 UNIMA award-winning *Feathers of Fire*. He has taught puppet theory and manipulation, directed and written for The Center for Puppetry Arts, and works now as a core member of Shadowlight Productions and as the artistic director for Driveway Follies, a Halloween marionette review. His movement company, Odd Savvy, was awarded a production grant in 2024 by The Jim Henson Foundation for his new work, *The Ground*.

## ALICE RUIZ

### Costume Designer

Alice (she, her) has been a freelance costume designer, assistant costume designer, costume mentor, and theatrical dresser throughout the Bay Area. Alice is happy to make her return to San Francisco Playhouse after designing *Clue* last season! Other recent credits include *Bees & Honey*, *Where Did We Sit on the Bus*, *Two Trains Running* (Marin Theatre Company), and *Dream Hou\$e* (Shotgun Players). [aliceruizdesign.com](http://aliceruizdesign.com) | [@costumesandcaffeine](mailto:@costumesandcaffeine)

## SARAH MARIE SELIG\*

### Stage Manager

[Through 3.31.24]

Sarah (she, her) is a graduate of San Francisco State University with a BA in theatre. Favorite San Francisco Playhouse credits include *Abraham Lincoln's Big*, *Gay Dance Party*, *Period of Adjustment*, *Bloody Bloody Andrew Jackson*, *The Motherfucker with the Hat*, *Jerusalem*, *The Nether*,

*The Roommate*, *King of the Yees*, and *Clue*. Other stage management credits include *Io Spero Che Balli* (Teatro Della Pergola in Florence, Italy), *Three Wise Monkeys* (Bay One Acts Festival), *Forever Never Comes* (Crowded Fire Theater), and *The Nature Line* (Sleepwalkers Theatre). "Lots of love to the cast of this awesome show and my wonderful Playhouse family!"

## LAUNDRA TYME

### Wig Designer

Laundra is known for her incisive style and incredible bespoke creations. She is the founder and creative force behind Wigs by Tips. A veteran of the San Francisco drag scene, Laundra also served as wig master for *Beach Blanket Babylon*, the longest-running live theatre revue in history.

## FOUNDERS

### SUSI DAMILANO

#### Founder & Producing Director

Susi (she, her) is co-founder and producing director of the San Francisco Playhouse. She is a five-time recipient of the Excellence in Theatre Award for Principal Actress in a Play from the San Francisco Bay Area Theatre Critics Circle for the Playhouse productions of *Abigail's Party*, *Harper Regan*, *Bug*, *Six Degrees of Separation*, and *Reckless*. Susi has also performed leading roles here in *Heroes of the Fourth Turning*, *Yoga Play*, *The Effect*, *The Roommate*, *Red Velvet*, *Tree*, *Bauer*, *Abigail's Party*, *Harper Regan*, *Coraline*, *Slasher*, *One Flew Over the Cuckoo's Nest*, *Landscape of the Body*, *First Person Shooter*, *Jesus Hopped the 'A' Train*, *The Crucible*, *Kimberly Akimbo*, *Our Town*, and *The Smell of the Kill*. Directing credits include Playhouse productions of *Clue*, *Indecent*, *Twelfth Night*, *Groundhog Day The Musical*, *Cabaret*, *Mary Poppins*, *Noises Off*, *She Loves Me*, *Stage Kiss*, *Company*, *Stupid Fucking Bird*, *Into the Woods*, *A Behanding in Spokane*, *Den of Thieves*, and *Wirehead* (SFBATCC nomination), the West Coast premieres of *Honey Brown Eyes* (SFBATCC nomination), *Dead Man's Cell Phone*, *Coronado*, *The Mystery Plays*, and *Roulette*, and the world premieres of *On Clover Road* by Steven Dietz, *From Red to Black* by Rhett Rossi, and *Seven Days* by Daniel Heath in the Sandbox Series.

## BILL ENGLISH

### Founder & Artistic Director

Bill is the co-founder and artistic director of the San Francisco Playhouse. In twenty years with Susi Damilano, he has guided its growth from a bare-bones storefront to the second-largest nonprofit theatre company in San Francisco. Bill designed our first theater space at 536 Sutter Street and personally reconfigured our current space from a

barn-like 700-seat hall into the current gracious and intimate 199-seat venue. Along the way, he has served as director, actor, scenic designer, and sound designer, winning San Francisco Bay Area Theatre Critics Circle nominations or awards in each of those categories. Bill is also an accomplished musician and builder. Milestone accomplishments include bringing Pulitzer Prize-winner Stephen Adly Guirgis to the Bay Area by directing three of his plays, commissioning twelve playwrights including Theresa Rebeck, Aaron Loeb, Lauren Gunderson, Lauren Yee, and Christopher Chen, and developing world premieres from workshops to Sandbox Series to Mainstage Season to Off-Broadway (including the Off-Broadway transfers of *Ideation* and *Bauer*), and presenting the very first production of *Grounded* by George Brant which later played at the Public Theater. He coined the phrase “the empathy gym” and it drives everything at the Playhouse.

## PRODUCTION AFFILIATIONS

### ACTORS' EQUITY ASSOCIATION

Founded in 1913, Actors' Equity Association is the US labor union that represents more than 50,000 actors and stage managers. Equity seeks to foster the art of live theatre as an essential component of society and advances the careers of its members by negotiating wages and working conditions and providing a wide range of benefits, including health and pension plans. Actors' Equity is a

member of the AFL-CIO and is affiliated with FIA, an international organization of performing arts unions. [actorsequity.org](http://actorsequity.org)

### UNITED SCENIC ARTISTS

United Scenic Artists, Local USA 829, IATSE, is a labor union and professional association of designers, artists, craftspeople, and department coordinators, organized to protect craft standards, working conditions and wages for the entertainment and decorative arts industries. The members of Local USA 829 work in film, theatre, opera, ballet, television, industrial shows, commercials, and exhibitions. [usa829.org](http://usa829.org)

### CONCORD THEATRICALS

Concord Theatricals is the world's most significant theatrical company, comprising the catalogs of R&H Theatricals, Samuel French, Tams-Witmark, and The Andrew Lloyd Webber Collection, plus dozens of new signings each year. Our unparalleled roster includes the work of Irving Berlin, Agatha Christie, George and Ira Gershwin, Marvin Hamlisch, Lorraine Hansberry, Kander and Ebb, Kitt and Yorkey, Ken Ludwig, Lin-Manuel Miranda, Dominique Morisseau, Cole Porter, Rodgers & Hammerstein, Thornton Wilder, and August Wilson. We are the only firm providing truly comprehensive services to the creators and producers of plays and musicals, including theatrical licensing, music publishing, script publishing, cast recording, and first-class production. [concordtheatricals.com](http://concordtheatricals.com)

---

Biography content provided by the actors, designers, and other artists profiled. Opinions expressed therein do not necessarily reflect the views of San Francisco Playhouse.

\* Member of Actors' Equity Association, the Union of Professional Actors and Stage Managers.

° The director is a member of the Stage Directors and Choreographers Society, a national theatrical labor union.

^ Member of United Scenic Artists, Local USA 829 of the International Alliance of Theatrical Stage Employees.

# SAN FRANCISCO PLAYHOUSE

San Francisco Playhouse is celebrating twenty years as San Francisco's Empathy Gym. Presenting a diverse range of plays and musicals, the Playhouse produces new works as well as reimagined classics, "making the edgy accessible and the accessible edgy." Its bold Sandbox Series – the only subscription series in the Bay Area devoted solely to presenting world premieres – is dedicated to nurturing new playwrights beyond readings. There is also a commitment to more in-depth new work through individual commissions, including plays by Ruben Grijalva, Michael Gene Sullivan, Theresa Rebeck, Christopher Chen, Lauren Gunderson, and Aaron Loeb. The Playhouse has developed, presented, and transferred three world premieres to New York. Gunderson's **Bauer** and Loeb's **Ideation** opened Off-Broadway, and Loeb's **Abraham Lincoln's Big, Gay Dance Party** won the best of New York International Fringe Festival. Their commitment to new works in the San Francisco Playhouse Sandbox Series has been honored by grants from the National Endowment for the Arts and the American Theatre Wing. The Playhouse secured their three highest-profile commissions to date: **Shoot Me When** by Ruben Grijalva, which was presented online during the pandemic and was awarded a Will Glickman Award, **Seared** by Theresa Rebeck, which opened the 2016-2017 Mainstage Season and was nominated for ten San Francisco Bay Area Theatre Critics Circle awards, and **You Mean to Do Me Harm** by Christopher Chen, winner of the Lanford Wilson Award from the Dramatists Guild of America in 2016. Works developed by the Playhouse have gone on to receive regional and national acclaim. Yockey's **Pluto** – a Playhouse commission – was named a National New Play Network Rolling World Premiere, George Brant's **Grounded** – a Playhouse premiere – was produced at the Public Theater starring Anne Hathaway and directed by Julie Taymor in 2015, and Loeb's **Abraham Lincoln's Big, Gay Dance Party** has received productions from Birmingham to Off-Broadway. [sfplayhouse.org](http://sfplayhouse.org)



# OUR STAFF

Founder & Artistic Director .....	BILL ENGLISH
Founder & Producing Director .....	SUSI DAMILANO
Production Manager .....	ANGELA KNUTSON
Company Manager .....	WERA VON WULFEN
Administrative Manager .....	MORGAN REISINGER
Marketing Director .....	DONNY GILLILAND
Technical Director .....	TISH LEUNG
Assistant Technical Director .....	ARIAN GRIMSRUD
Development Director .....	TIIU EVA REBANE
Associate Artistic Director .....	MARIE-CLAIRE ERDYNAST
Production Coordinator .....	SARAH SELIG
Bookkeeper .....	ANGELINA SHUMAN
Audience Development Manager .....	QUENSELLA MILLER
House Lead .....	JULIET HICKS
Concessions Manager .....	MICHAEL CAZARES
Rising Stars Coordinator .....	LINDSAY SPORLEDER
Costume & Properties Coordinator .....	LEX NOSEWORTHY
HR Specialist .....	DANIKA RODRIGUEZ INGRAHAM
Assistant Concessions Manager .....	TORI LEUNG
Production Associate .....	JOEL MOORE
Marketing Associate .....	JUAN REBUFFO
Artistic & Events Associate .....	BECKY HIRSCHFELD
Development Associates .....	MADELINE DENOFIO NASTARAN NAZARIAN
Operations Associate .....	JULIET HICKS
Box Office Manager .....	KYZIAH SHAVERS
Assistant Box Office Manager .....	ASHLEIGH FRANKLIN
Box Office Associates .....	BRITTANY KAMERSCHEN DANIEL PEREZ
Front of House Associates .....	KAMARIA ATIBA BECKY HIRSCHFELD GRACE JOSEPH JIM McCUNN QUENSELLA MILLER TRE WEBER
Concessions Associates .....	KAMARIA ATIBA MIGUEL CHAVEZ GRACE JOSEPH STEPHEN VAUGHT TRE WEBER
Safety Officers .....	KAMARIA ATIBA MICHAEL CAZARES JULIET HICKS ANGELA KNUTSON MORGAN REISINGER
Resident Playwright .....	AARON LOEB
Empathy Gym Dog .....	EMI

All images and/or content provided by San Francisco Playhouse staff, contractors, and/or creative artists unless otherwise credited. Opinions expressed by contractors, contributors, and/or creative artists do not necessarily reflect the views of San Francisco Playhouse. Photo credits are included as provided.

Published by Third Act Services • [www.thirdact.services](http://www.thirdact.services) • 415.377.9323

# FOUNDATION & CORPORATE DONORS

We gratefully acknowledge the following corporate and foundation support.

## **\$25,000+**

Barbara and Gerson Bakar Foundation  
Clay Foundation – West  
Google, Inc.  
Jewish Community Federation  
Kanbar Charitable Trust  
Khachatourian Foundation  
Kimball Foundation  
National Endowment for the Arts  
Phyllis C. Wattis Foundation  
Grants for the Arts  
The San Francisco Foundation  
The Shubert Foundation  
Taproot Foundation

## **\$10,000+**

Alafi Family Foundation  
American Theatre Wing  
Aroha Philanthropies  
The Bernard Osher Foundation  
The Sheri and Les Biller Family Foundation  
Castilian Fund  
The Mill Foundation  
SF Arts Commission  
Ululani Foundation  
The Weinstein Gallery

## **\$5,000+**

Adobe Matching Grants  
Barney's, Inc.  
Edgerton Foundation  
Kenneth Rainin Foundation  
National New Play Network  
Stanley S. Langendorf Foundation  
The Tournesol Project  
Zellerbach Family Foundation

## **\$1,000+**

Autodesk, Inc.  
Benevity Community Impact Fund  
Creative Capacity Fund  
Dramatists Guild Fund  
Elks Lodge No. 3  
Fleishhacker Foundation  
Lerner, Veit & Stanaland LLP  
The Over the Rainbow Fund  
Thomas Reuters  
RHE Charitable Foundation  
Sloan Foundation  
Society for Community Work  
William & Flora Hewlett Foundation  
Zephyr Real Estate

## **MATCHING GIFTS & GIFTS UNDER \$1,000**

AmazonSmile  
Aon Foundation  
Apple, Inc.  
Berk Family Charitable Fund  
Cengage Learning  
Charity Motors  
The Charles Schwab Foundation  
Chevron Humankind  
Center for Learning in Retirement Drop Box  
Farella Braun & Martel LLP  
Fidelity Charitable Gift Fund  
Fuel for Change  
IBM International Foundation  
Johnson & Johnson  
Lawrence Livermore  
National Laboratory  
Levi Strauss Foundation  
Macy's Foundation  
Mechanics Bank  
Morgan Stanley Smith Barney  
MSCI, Inc.  
Qualcomm  
Salesforce Foundation  
Santa Valencia LLC  
Silicon Valley Community Foundation  
Verizon Foundation  
Visa, Inc.

# PRODUCER CIRCLE DONORS

Donors at this level enjoy recognition around a production of their choice, are invited to readings and working rehearsals, and receive many other great benefits for their generous gifts. Donations are listed for the year ended February 2, 2024. Every attempt is made to keep these lists as accurate and correct as possible. Please contact the development department by calling 415.866.8907 or sending email to [development@sfplayhouse.org](mailto:development@sfplayhouse.org) if we have made an error, you have any questions, or would like to make a gift.

## Season Producer - \$75K+

Barbara and Gerson  
Bakar Foundation  
Mr. Robert Hulteng  
San Francisco Grants for the Arts  
William McAllister,  
In memory of Janet McAllister

## Executive Producer - \$25K+

Betty & Clifford Nakamoto  
Betty Hoener  
Bill & Ursula Moffett  
CA Small Business Relief Grant  
Clay Foundation - West  
Fred Karren, In loving memory of  
Beth Karren  
Helen E. Land  
Jan & Howard Oringer  
Linda Brewer  
Paul Asente & Ron Jenks  
Phyllis & Jerry Rosenberg  
Sharon & Samuel Muir  
Sue Kubly  
The Shubert Foundation  
Ululani Foundation  
William & Marsha Adler  
William J. Gregory  
William McAllister & Judy Parker  
William McAllister & Susan Watson

## Producer - \$10K+

Arne & Gail Wagner  
Barbara & Saul Rockman  
Christian Chadd Taylor  
Craig Moody  
Cynthia & David Bogolub  
Dana & Gary Shapiro  
Diarmuid Russell &  
Heather Podruchny  
Duff & Carol Kurland  
Elizabeth Groenewegen  
Elizabeth Werter & Henry Trevor  
Fred Hartwick  
Greg Gorel  
Hart Family Foundation  
Jackie & Richard Mayer  
Jeffrey Pfeffer & Hildy Shandell  
Karla Jones  
Keith Goldstein &  
Donna Warrington  
Margaret Sheehan  
Margot Golding &  
Michael Powers

Michael Levy & Michael Golden  
Nick & Sandy Javaras  
Rich & Judy Guggenhime  
Robert Beadle  
Rowland Weinstein  
Steven & Karin Chase  
The Bernard Osher Foundation  
The Estate Of John Williams  
The Ronald Whittier  
Family Foundation  
The Tournesol Project

## Associate Producer - \$5K+

Alan Mattacola, In loving  
memory of Emile Reyes  
Ann Ludwig & Joe Short  
Anne & Martin Roher  
Billie & Thomas Horst  
Bobak Bakhtiari  
Bonnie McGregor  
Bruce Colman  
Carol Sundell  
David Madfes & Judy Leash  
David May &  
Susan Carluen May  
Erica Nietfeld & Royce Moley  
Gale Gottlieb  
Galen Workman &  
Geoffrey Kulik  
Harry & Kay Rabin  
Helene & Larry Edelman  
Jenn & David Stringer  
Joan Eckart  
Joan Rost, In memory of  
Clayton Rost  
Karen & David Crommie  
Karin Albright  
Karissa Wong  
Kate Miller  
Kevin Gahagan  
Krystyna Finlayson  
Leslie Karren in loving memory  
of Fred & Beth Karren  
Marcy Taylor Pattinson  
Mary Wais, In memory of  
R. Jeffrey Wells  
Miriam Gauss  
Muriel Kaplan & Bob Sturm  
Nancy Larson  
Nancy Thompson & Andy Kerr  
Richard & Terry Horrigan  
Richard Andersen &  
Ursula Schorn  
Robert Weston

Ruth Finkelstein  
Sheila & John Dalton  
Susannah Raub  
Tim & Lyn Potter  
Tom & Stephanie Lima  
Vicki & David Fleishhacker  
Wayne Bryan & Dick Bufania

## Patron of the Arts - \$2K+

Audrey Bojack  
Betty & Jack Schafer  
Brian & Joanie Johnson  
Buz & Anne Battle  
Carl Jukkola & Desmond Lee  
Carolyn Jayne  
Christopher & Liv Cann  
Claire Axelrad & Mark Pahlavan  
Damien Keller & James Sokol  
Diane Compagno Miller  
Dr. David & Charlene Ploss  
Elaine Baskin & Ken Krechmer  
Emily & Lisa Honig, In honor of  
Lorraine & Victor Honig  
Frances Campra  
Frances Schendle  
Intersection for the Arts  
James Helman &  
Josephine Bellacomo  
James Warren, In honor of  
Bill Gregory  
Jennifer S. Lindsay  
Jim & Gayle Tunnel  
Joan C. Zinner  
John Ontiveros &  
Mark Herrmann  
John Steinfurst & Sharon Collins  
Katherine Blenko &  
Joseph Belanoff  
Larry Russo  
Linda Jaeger  
Linda Montgomery & Roy Hahn  
Lois & Arthur Roth  
Louis Parnell & Jeff Wincek  
Marilyn Rutz & David Levy  
Masha Farber, TheaterGames  
Michael B. Wisper  
Michele Stratton  
Mike & Lea Ann Fleming  
Mike Crosby & Dr. Marsha Brown  
Misty Tyree  
Myles & Ida Abbott  
Nina Buthee  
Paul Feasby  
Paulette Lueke

## Patron of the Arts

### Continued

Rebecca Lebuhr  
Richard & Jacqueline S. Boberg  
Rob Mitchell & Jaime Caban  
Roman & Hamila Kownacki  
Ron Clyman & Francoise Mauray  
Ron Goodman &  
Richard Leadbetter  
Ronald & Susan Berman  
Samuel Test  
Sandra Hess  
Sharon Litsky & John Sampson  
Society for Community Work  
Sophie-Charlotte Moatti &  
Matthew Houston  
Susan Kolb  
Susan Ledford  
Susie & Britt Stitt  
Suzanne Cross & John Simpson  
Tanya Slesnick & Ted Mitchell  
The Roberts-Hansen  
Gratitude Fund  
The Wu Fund  
Thomas Owen  
William O'Keefe

### Inner Circle - \$1,500+

Alyosha & Moya Verzhbinsky  
Audrey Vernick  
Barbara & Mathew Frome  
Barbara Morrison  
Barbara Sommer  
Beth Weissman  
Blanche & Steve Sillen  
Bob & Margaret Ippolito  
Craig & Lorraine Mautner  
Daniel & Debra Hunter  
David Anderson & Nancy Kaible  
Denise Michael & David Schirle  
Dennis James & Michael Pereira  
Dexter & Kathie Lowry  
Edward Cullen  
Emily Papert Williams  
Gail Gabiati & Tom Borden  
Gary & Yvonne Goddard  
George Lucas &  
Tom Rothgiesser  
Georgiana Evans  
Hoyle Leigh  
In memory of John Trout  
Janie Friend  
Jay Streets  
Jill Connolly  
Julia & Gordon Held  
Karen Anijar & Robert Appleton  
Karin & Gregory McClune  
Kathleen McManus  
Linda Romley-Irvine &  
Perry Irvine, in memory of  
Chuck Yingling  
Marcus & Sara Byruck  
Marietta Bartoletti  
Mark Cohen & Jackie Pelavin

Michael Mathis  
Michele & David Benjamin  
Michele Burton  
Nancy K Austin & Bill Cawley  
Neil Bray, In loving memory of  
Cris Bray  
Patty McCrary  
Peter & Diane Lawrence  
Richard Johns  
Rodney Farrow  
Ron Morrison  
The Francis Family  
Tom Driscoll & Nancy Quinn  
Will Green  
William Van Dyk & Margi Sullivan

### Benefactor - \$750+

Al Hoffman & David Shepard  
Alan Markle  
Alice Chambliss  
Allison Stanton  
Amy & Mort Friedkin  
Amy Lawson & Scott Fittje  
Ana Maria Martel  
Arlene Waksberg &  
Charles M. Clark  
Arthur & Sheri Schmauder  
Barbara & Mordechai Winter  
Barbara Keck  
Barbara Waldman  
Barry Margerum  
Berk Family Charitable Fund  
Bill & Janet Eaglstein  
Boris Veytsman  
Bruce Degan  
Bruce W. Jenett &  
Nola Masterson  
Carol Henri  
Carola Shepard  
Caroline Hillhouse  
Carren Shagley  
Dan & Suzanne &  
Shannon Carroll  
Dan Rolleri  
Daniel Field & Gary Robinson  
David Barker & Margaret Mason  
Diana Gay-Catania &  
David Catania  
Douglas Grigg  
Duncan Barr  
Elisa Neipp  
Elizabeth Erdos  
Elizabeth & George Anders  
Elizabeth S. Strong  
Eugenia Loken  
Francis Gilliland  
Gail Hamilton  
Gloria & Ross Edwards  
In memory of Thomas Urani  
Itamar Arel  
Jeannene Hansen  
Jeff Gaines & John Griffin  
Jeremy Platt  
Jim Colopy  
Joan Huff  
John & Linda Elman, in honor of  
Margaret Sheehan &  
Bruce Colman  
Joyce Nachtrieb  
Judith & Charles Rino  
Judith & Harold Dittmer  
Judith Cohen & Malcolm Gissen  
Judith Kurtz  
Judith Siebenthal  
Karen Sullivan & Ken Mitchell  
Kathleen Lawswe  
Kenneth C. Larson &  
Linda Adams  
Kenneth Noyes & Alan Pardini  
Kurt Nelson  
Kurtis Nelson  
Lawrence & Rebecca Helzel  
Leo & Charlene Ott  
Lester Mayer  
Linda Whalen  
Lyn Isbell  
Lynda Beigel & Ellen Davis  
Lynn Fonfa  
Lynne Painter  
Maggie Thompson  
Marcia & David Vastine  
Marianne Friebe &  
Jacqueline Rogers  
Maribeth Portz  
Mary Field  
Mary Lou Torre & Rich Hagan  
Melanie & Peter Maier, in honor  
of Fred Karren  
Michael B. Wisper  
Michael Zarrella & Linda Ruggeri  
Michele Epstein  
Mike Smith  
Nancy & Alan Raznick  
Nancy Igdaloff  
Pamela Sebastian  
Pamela Thompson  
Paul Spiegel  
Paul Werner  
Randall Askin  
Richard & Diana Shore  
Richard West  
Rick Zonne  
Roger Levy  
Ronnie Caplane  
Roy Bergstrom  
Russell Nelson  
Sandra Keith &  
Robert Shephard  
Sandry & Dick Drew  
Stephen Laruccia  
Steven Peterson & Peter Jarit  
The Eddie Reynolds &  
Hernán Correa Family Fund  
The Leo J. & Celia Carlin Fund  
The Libi & Ronald Cape  
Philanthropic Fund  
The Wilder Family  
Thomas O'Brien  
Veronica & Rodney Kiefer



Virginia Menezes  
Warren Thomson  
William E Turner

**Friend - \$250+**

Alex Ingersoll  
Andrea Shuel  
Anita Grandpre  
Antonia Lozon  
Arnold Dito  
Barbara Loomis &  
Stephen Elspas  
Bill & Holly Shepard  
Bill & Jadranka Hyatt  
Bill Madison  
Bruce Thompson  
Carey Perloff  
Carol Emory  
Carol Ludwig  
Carolyn Copel & McKinney  
Carolynn & Anthony Tabacco  
Charles Dorris  
Christine Silver  
Christopher Jantzen &  
Denise Demoss  
Cristina Blanco  
Damon Ott  
Dave & Carmelle Reiser  
David Aaker  
Dennis & Karen May  
Diane & Steve Ciesinski  
Donna Brorby  
Douglas Philip Cyr  
Dr. & Mrs. Samuel Sobol  
Ed Babin III  
Ernest Grossman  
Ethel Chang  
Gail Murphy  
Geoffrey Jue  
Gina & Steve Harris  
Helen Anders  
Holly Spalding  
Iain Finlay  
Ian Stockdale & Ruth Leibig  
In memory of Helen E. Gallagher  
In memory of Jane Keller  
Ingrid Jacobson  
Ingu Yun  
Irene Hilgers  
Jacqueline Minor  
Jan Pardoe & Cathy McIntosh  
Janet & Art Wong  
Janet Johns  
Janette Smith  
Janine Scancarrelli  
Jeanene Ebert  
Jeanne Milligan  
Jennifer Burden  
John & Mary Gill  
John Ruskin  
John S. & Kathy Blum  
Jon & Carol Richards  
Judy Gallagher  
Julie Hébert

Juon-Kin Fong  
Karen Greig  
Karen Loane, In honor of my  
dear friend Leslie Karren  
Karen Wiel  
Kate Stacy  
Keith & Susan Gilbert  
Kristin Bass  
Launa Jill & Daniel A. Sanders  
Lawrence White  
Leslie Murdock & Kathleen Wall  
Lester Olmstead-Rose  
Lily Chow  
Linda Pinkoski  
Maggie Johnson  
Marcia Popper  
Marcus Ewert  
Maria M. Meyer  
Mark Devenenzi  
Mark Evanoff  
Michael Stecher  
Michele Garside  
Mike Kaplan  
Miriam Morgan  
Monica Kochanny  
Morey & Jonnie Weingarten  
Norman & Lucille Zilber  
Pier Voukos  
Randall Shields  
Rebecca Martinez  
Rebecca Pauling  
Ricki & Doug McGlashan  
Robert J Intner  
Robert Ripps  
Ron Barrington  
Ronald Fisher  
Rosalind Walrath  
Rose Mary Reed  
Ruth Botchan  
S&ra Blair & Carol Cohen  
Scott Dai  
Scott Ferguson & Kate Hanson  
Sean McBride  
Sharon & Dennis Clisham  
Sharon Djemal & Peter Rukin  
Sheila Gloss  
Stephanie Marshall &  
Charles F. Miller  
Stephen Skedzielewski &  
Connie Howe  
Suzanne & Allan Epstein  
Suzanne & Bruce Degen  
Suzanne Beim  
Sy Aal  
Sylvia Pascal  
Terri Kwiatek  
The Benevity Community  
Impact Fund  
The Cat Call Choir  
The Dhar Family  
Thomas Edwards &  
Rebecca Parlette-Edwards  
Tito Torres  
Toni Bassett  
Valerie Sopher

Verne Brand  
Vivian Brown  
Vivian Crisman  
Walker Foundation  
Warren & Judy Branzburg  
William Crawford

**Advocate - \$100+**

Akiyo Yokoi  
Alan Smith  
Alyson Tufts  
Andrew Freeman  
Ann Bancroft  
Ann Chen  
Ann Garrett  
Anne Dillon  
Anne Hallinan  
Annette Lai  
Ascend Real Estate  
Astrid Lactis  
Audrey Jackson  
Barbara Feduska  
Barbara Gersh  
Barbara Wong  
Ben Wong  
Bergit Mueller  
Beryl Kay  
Betsy Archer  
Betty Ho  
Betty Miller Kolotkin  
Betty Taisch  
Bill English & Susi Damilano  
Bill Tiedeman  
Bob & Bob Pinder  
Brandon Lee  
Breena Walton  
Brian & Jocelyn Herndon  
Callie Crum  
Calvin Lau & Charles Bush  
Calvin Murashige  
Carol Dean  
Carol Hazenfield  
Carol Lashman  
Carol Savary  
Carolyn Siegel  
Charles & Kathryn Hardeman -  
Living Interiors Ltd  
Charles Wagner  
Christine Chang  
Christine Patch-Lindsay  
Christopher McCormick  
Chuck & Marby Bennett  
Claudia Sarconi  
Corinne Lashley  
Cyd Harrell  
Dana Tom & Nancy Kawakita  
Daniel Bruining  
Darryl Compton  
David Chase  
David Gibson  
David Greenspan  
David Mellor  
David Miller  
David Pasta  
David Rachleff  
David Wilmore  
Dawn Nakashima  
Deanna Hernandez  
Dee Kursch  
Deepti Madathany  
Dennis Kelly  
Dennis Setlock  
Dennis Wulkan  
Diana Taylor

## Advocate Continued

Diane Ross  
Diane Sampson  
Dianna & Dan Pisano  
Dolores MacKinnon  
Donald Hesse  
Doug Faunt  
Dr. Stephen & Linda Eckstone  
Elizabeth Huchberger  
Ellen Schell  
Elnora Ke  
Elsie Fraumeni  
Emily Schaeffer  
Eric Gornitsky  
Evan Painter & Wendy Polivka  
Eve Barringer  
Forrest Laureano  
Frana Price  
Frances Whelan & Thomas Ryan  
Fred Rosenblum  
Friend of Dorothy  
Gail Debellis  
Gail MacGowan  
Gail Offen-Brown  
Gail Reed  
Gary & Elise Berticevich  
Gary & Margaret Miller  
Gary Jaffe  
Geoffrey Clarke  
George Heymont  
Gerald Besses  
Gerry Blunt  
Gilda Sullivan, In honor of  
Karen Sullivan & Ken Mitchell  
Glenda Wong  
Gloria Upchurch  
Gordon & Susan Reetz  
Gretchen Vonduering  
Guy Joslin  
Helaine Isaacs  
Helen Rigby  
Henry Milich  
Herbert Elliott  
Howard Brownstein  
Ittai Berekat  
Ivan Tou  
Jacqueline McMahan  
James Campbell  
James Rattner  
James Seff  
jamie Shuel  
Janet Mcandless  
Janice Cornwell  
Janice Richard  
Jeffrey Fell  
Jennie Noerr  
Jennifer & Peter Keith  
Jeremy Siegel  
Jim & Arielle Bourgart  
Jim & Gay Versteeg  
Jim Turner  
Joan Piaget  
Joan Simmons  
Joan Sullivan  
Joel Paul  
John Johnson  
John Kelley  
John Kemp & Mary L Brutocao  
Joyce Pollack  
Judith Applebaum

Judith Berling  
Judith Duffy  
Judith Ostapik  
Judith Teichman  
Judith Traverso  
Julie Kaufman  
June Hunt  
Karen & Keith Lee  
Karen Ens  
Karen Traister  
Karen Turner Sanford  
Karesha Mcgee  
Katherine Conklin  
Kathleen Gee  
Kathryn Traynor  
Kay Faulconer Boger  
Kay Grace  
Kay Sprinkel Grace  
Kayleigh Henson  
Kim Kinkella  
Kimberly Mark Webb  
Laura Marlin  
Laurel Schaefer-Trent  
Lawrence Livermore Laboratory  
Len Christensen  
Leslie Morelli  
Linda Chafetz  
Linda Hibbs  
Linda Vallee  
Linda Zimmerman  
Louis Kravitz & Charles Lagrave  
Lucy Perdicizzi  
M.K. & Katherine Davis, In memory of  
Terry Davis  
Mabel Ng  
Maddy McBirney  
Mare & Paul Manangan  
Margaret Fuson  
Margery Eriksson & James Nelson  
Marie-Noelle & Greg Phillips  
Marilyn Beller  
Mark Maigatter  
Mark McNay  
Mark Oliver  
Mark Rubenstein & Yvonne LaLanne  
Mark Viviano  
Martin Johnson  
Mary Claugus  
Mary Crosby & Thomas Piazza  
Mary Pless  
Mary Powell  
Mauricio Cevallos  
Melanie Jones  
Melissa Perez  
Meredith Watts  
Michael & Maureen Samson  
Michael B. Marion  
Michael Bauer  
Michael Davis  
Michael Roy  
Michael Sibitz  
Michael Steel & James Coletti  
Mike & Cullynn Russell - Vaeth  
Mike & Cullynn Russell - Vaeth  
Mike & Kathy Ransom  
Mimi Jensen  
Mitch Gitin  
Mitchell Field, In loving memory of  
Jackie Field  
Monica Choi  
Montgomery Slatkin  
Monya Baker & Erlanson Daniel

Morgan & Michael Callahan  
Murphy & Wayne Robins  
Myrna Aronoff  
Nancy & Pat Broderick  
Nancy Hall  
Nancy Sturm & Robert Love  
Nancy Turak  
Nelda Kilguss  
Nicholas Sutton  
Norma Randall  
Olga Gary  
Pam Smith  
Patrick Moran  
Paul Munro  
Paula Clark  
Paula Cornyn  
Peggy DeMouthie  
Penny Schreiber  
Peter Bickel  
Peter Rengstorff  
Phoebe Moyer  
Rachel Hernandez Moller  
Rafael Costas  
Randie Bencanann & Bobby Baron  
Renee Coleman  
Rhea Rubin  
Richard & Ann Lanzerotti  
Richard Colton  
Richard Jenny  
Robert & Jan Ginsberg  
Robert & Carin Bryans  
Robert F. Adams  
Robert Kaiser  
Robert Mascola & Jennifer Kopec  
Robert Sullwold  
Roger Schrag  
Ron & Lynn Laupheimer  
Rosemary Corbin  
Russ Ferreira  
Russel Campbell  
Russell Gill  
Sandra Cronsborg, In honor of  
Alex Hurt  
Sara Ivie  
Scott & Sharon Miller  
Scott Stroshane  
Shanna Yonenaka  
Sharon & Mike Demere  
Sheila McCormick  
Sheila Simon  
Shirley Ching  
Siu Ma  
Stephen Geisheker  
Stephen Gong  
Steven Ortega  
Susan & Jeff Dunn  
Susan Bayer  
Susan Jacobson  
Susan Terris  
Thomas & Lucy Sponsler  
Thompson Chambers  
Tiffany Zhang  
Vanessa Homewood  
Vicki Rosen  
Vickie Headley  
Werner Bachmann  
William Giammona  
William Hering  
William Woods  
Zachary Frangos  
Zhen He

# RISING STARS

Rising Stars are the future movers and shakers of the American theatre. They are high school students who are also actors, directors, writers, and designers. They are dreamers and doers, and their journey is made possible by heroes like you. For only \$150 you can sponsor four tickets for local Rising Star students to see four plays at San Francisco Playhouse. Visit us online today and join the heroes below!

Werner Bachmann  
Eve Barringer  
Kristin Bass  
Lynda Beigel  
Sandra Blair & Carol Cohen  
Linda Brewer  
Vivian Brown  
Morgan & Michael Callahan  
Suzanne & Dan Carroll  
Mauricio Cevallos  
Thompson Chambers  
In Honor of  
    Betty & Clifford Nakamoto  
Len Christensen  
Paula Clark  
Renee Coleman  
Mike Crosby  
Anne Dillon  
Charles Dorris  
Susan & Jeff Dunn  
Helene & Larry Edelman  
Paul Feasby  
Barbara Feduska  
Lynn Fonfa  
Elsie Fraumeni

William Giammona  
Sheila Gloss  
Eric Gornitsky  
Gail Hamilton  
Irene Hilgers  
Joan Huff  
Igdaloff & Levin  
Mary Ippolito  
Gary Jaffe  
Mike Hill & Richard Jenny  
John Johnson  
Robert Kaiser  
Mike Kaplan  
Beryl Kay  
Nelda Kilguss  
The Kurl & Family Foundation  
Mark Rubenstein &  
    Yvonne LaLanne  
Ken Larson & Linda Adams  
Tom & Stephanie Lima  
Ann Ludwig  
David Madfes & Judy Leash  
David May &  
    Susan Carluen May  
Ron Morrison

Kenneth Noyes  
Jan & Howard Oringer  
Thomas Owen  
Christine Patch-Lindsay  
James Rattner  
Susannah Raub  
Phyllis & Jerry Rosenberg  
Mike Russell  
Sheila Simon  
Tanya Slesnick & Ted Mitchell  
Thomas & Lucy Sponsler  
Michael Steel  
Karen Sullivan  
Nancy Thompson & Andy Kerr  
Bill Tiedeman  
Jim Turner  
Kris Vecere  
Jim & Gay Versteeg  
Morey & Jonnie Weingarten  
Frances Whelan &  
    Thomas Ryan  
David Wilmore  
Betty Yalich

# LEGACY CIRCLE DONORS

We gratefully acknowledge the following patrons for making a legacy commitment to San Francisco Playhouse. Please remember us in your will and trusts.

## Gifts Received from the estates of:

Nancy Blair (In Memoriam)/The  
    Estate Of Nancy Blair  
Gretchen Saeger  
Kevin Shoemaker  
The Estate Of Patty Wilkerson  
John A. Williams  
Gerhard Woelke  
Delphine Zeuli

## Gifts Designated

William & Marsha Adler  
Paul Asente & Ron Jenks  
Susan Atherton  
Nancy Axelrod  
Robert H. Beadle  
Linda Brewer  
Agnes Chen Brown, In Memory  
    Of Robert Elliott Brown  
Sharon & Dennis Clisham  
Greg Gorel  
William J. Gregory  
Jeannene Hansen  
Mr. Robert Hulteng  
Geoffrey Jue  
John & Catherine Kalin

Fred Karren, In loving memory of  
    Beth Karren  
Nancy Thompson & Andy Kerr  
Helen E. Land  
Susan Ledford  
Sharon & John Litsky  
David Madfes & Judy Leash  
Andrew Maguire & Doug Cyr  
Rebecca Martinez  
Jackie And Richard Mayer  
The Eddie Reynolds and  
    Hernán Correa Family Fund  
Dana and Gary Shapiro  
John Steinfirst & Sharon Collins  
Linda Vallee  
Michael B. Wisper

**Join the Legacy Circle today!** Share your passion for intimate theatre with generations to come. Planned giving allows you to designate a portion of your estate to provide long-term stability to our mission and serve future generations. It may provide you with substantial tax advantages and even income during your lifetime. Please call 415.866.8907 or email [development@sfplayhouse.org](mailto:development@sfplayhouse.org) or for more information.

# THE GLASS MENAGERIE

BY TENNESSEE WILLIAMS  
DIRECTED BY JEFFREY LO

MAY 2 - JUNE 15, 2024



Pictured: Jomar Tagatac (Member Actors' Equity Association). Image by Jessica Palopoli.

SAN FRANCISCO  
**PLAYHOUSE**

**TICKETS &  
SUBSCRIPTIONS**

NOW AVAILABLE AT  
[SFPLAYHOUSE.ORG](https://SFPLAYHOUSE.ORG)

