

THE STAGE

SEASON 2023 | 2024

POWERFUL.
PROVOCATIVE.
PROFOUND.

WEST COAST PREMIERE

MARTIN McDONAGH'S

HANGMEN

OLIVIER WINNER
'BEST NEW PLAY'



DIRECTED BY
JAMES REESE

APRIL 3 - 28, 2024

SAN JOSE STAGE COMPANY'S
28TH ANNUAL EPIC EVENING OF POLITICAL SATIRE!

MONDAY NIGHT LIVE 28

GUEST HOST

SAN JOSÉ MAYOR

MATT MAHAN

SPECIAL GUESTS

CASE SWENSON

MICHAEL VAN EVERY

JUNE 24 2024

COCKTAIL RECEPTION **5PM**

PERFORMANCE **7PM**

JOIN US FOR THE
MUST-BE-THERE
EVENT OF THE YEAR!

Featuring the usual suspects of community leaders and political heavyweights in an evening of fun, fantasy, and fiction where insiders and outsiders do what it takes to pull off the show's topical sketches.

A riotous political mash-up that benefits THE STAGE while revealing the hidden talents of our community leaders, elected officials, and the current state of political affairs, MNL is a sell out event, so make reservations early to save yourself a seat in the live studio audience!

NO POLITICIANS ARE HARMED
IN THE MAKING OF
MONDAY NIGHT LIVE...

THE STAGE

490 S. 1st Street

San Jose, CA

FOR SPONSORSHIPS & TIX VISIT
WWW.THESTAGE.ORG



FROM THE ARTISTIC DIRECTOR

"I suppose I walk that line between comedy and cruelty because I think one illuminates the other. We're all cruel, aren't we? We are all extreme in one way or another at times and that's what drama, since the Greeks, has dealt with."

— Martin McDonagh



Ready for some "gallows" humor?

The Stage is thrilled to present the West Coast premiere of **Hangmen** by Martin McDonagh.

Described as "rip-roaringly hilarious yet profoundly horrific" by the New York Times, **Hangmen** takes on the thorny issue of capital punishment on the eve of the practice being set to end in the United Kingdom.

It is impossible to overlook the striking relevance of this play amidst today's social strife. Set in the mid-1960s, an era of huge social change, the play's exploration of power, justice, and morality resonates deeply with today's world grappling with issues of systemic inequality, racial injustice, and the ongoing debate surrounding capital punishment. **Hangmen**

prompts us to confront uncomfortable truths about the nature of justice and the role of authority in our society.

In a world where past injustices reverberate with alarming familiarity, the play serves as a stark reminder of the enduring relevance of its themes and the urgent need for introspection and action in the face of injustice, delivered with Martin McDonagh's trademark dark humor that both shocks and illuminates.

Hangmen marks our sixth production of McDonagh's work and it is sure to take a place of honor in the history of The Stage along with **The Beauty Queen of Leenane**, **A Skull in Connemara**, **The Lonesome West**, **The Pillowman**, and **The Lieutenant of Inishmore**. Guided by the skilled vision of James Reese, our company of familiar, beloved, and gifted actors will transport you to a different kind of swinging (pun intended) Northern England pub where some glorious language will tantalize your ears. (Do read our handy glossary later in the playbill to get the gist of any new-to-you phrases.)

As ever, we extend our heartfelt gratitude to each and every one of our subscribers, patrons, and funders for your unwavering support of The Stage. In a time when theatres across the globe are struggling to recover from the impacts of the pandemic, The Stage remains a vital cornerstone of our community, strengthening the bonds that lift us all higher.

Now, stop me if you've heard this one, but three executioners walk into a bar and...

Settle in to absorb the searing glory of **Hangmen**.

Randall King
Artistic Director

SAN JOSE STAGE COMPANY
presents the West Coast premiere of

HANGMEN

by Martin McDonagh

Will Springhorn Jr.*	Matthew Kropschot
Judith Miller	Carley Herlihy
Keith Pinto	Nick Mandracchia
Michael Storm*	Randall King*
Michael Champlin	Matthew Locke
Julian Lopez-Morillas*	

Scenic Designer
Robert
Pickering

Costume Designer
Ashley
Garlick

Lighting Designer
Maurice
Vercoutere

Sound Designer
Steve
Schoenbeck

Properties Designer
Jenn
Trampenau

Fight Choreographer
Johnny
Moreno

Dialect Coach
Kimberly
Mohne Hill

Assistant Stage Manager
Stephany
Puentes

Stage Manager
Iliana
Karbowski*

Directed by
James Reese

* Member of Actors' Equity Association. This theater operates under an agreement with Actors' Equity Association, the Union of Professional Actors and Stage Managers in the United States.



Hangmen is presented by special arrangement with Dramatists Play Service, Inc., New York.

The performance lasts approximately two hours. There is one intermission.

THE STAGE

SAN JOSE STAGE COMPANY, 490 South 1st Street, San Jose, CA, 95113
www.thestage.org • 408.283.7142 • boxoffice@thestage.org

Please note the location of all exits.

Please check to see that all electronic and mobile devices are turned off during the performance. The use of cameras or any recording equipment in the theater is strictly forbidden. For your safety and the safety of our performers, do not step onto the set or stage nor touch any props or set pieces.

CAST (IN ORDER OF APPEARANCE)

Harry	Will Springhorn Jr.*
Mooney, Hennessy	Matthew Kropschot
Alice	Judith Miller
Shirley	Carley Herlihy
Syd	Keith Pinto*
Bill, Doctor	Nick Mandracchia
Charlie, Guard	Michael Storm*
Arthur, Governor	Randall King*
Inspector Fry, Guard	Michael Champlin
Clegg, Priest	Matthew Locke
Pierrepoint	Julian Lopez-Morillas*
Fight Captain	Michael Storm*

CREATIVE TEAM

Director	James Reese
Scenic Designer	Robert Pickering
Costume Designer	Ashley Garlick
Lighting Designer	Maurice Vercoutere
Sound Designer	Steve Schoenbeck
Properties Designer	Jenn Trampenau
Fight Choreography	Johnny Moreno
Technical Consultant	Jonathan Williams
Stage Manager	Iliana Karbowski*
Assistant Stage Manager	Stephany Puentes
Dialect Coach	Kimberly Mohne Hill

PRODUCTION TEAM

Assistant Scenic Designer, Charge Scenic Artist	Riley Gruenthal
Scenic Artist	Bill Vujevich
Assistant Dialect Coach	Kristin Hill
Lead Scenic Carpenter	Brett Andersen
Scenic Carpenters	Brooke Deatheredge, Erica Smith
Scenic Painters	Amaya Deshasier, Lauren Suiter
Master Electrician	Aaron Gin
Electrician	David Jeffries
Production Assistants	Cheyenne Bacon, Helen Beyer
Special Thanks	Vesuvio Cafe, San Francisco San José State University

COMMUNITY PARTNERS

Academic Coffee • Contemporary Asian Theater Scene • Mosaic • The Starving Musician



SPEAKING HANGMAN

What did they just say? Here's a too-brief guide to some of the more unfamiliar expressions in **Hangman**.

Albert Pierrepont: English hangman who executed 435 to 600 people in a 25-year career that ended in 1956.

Any Road: Northern English slang for *anyway*.

Arse: Rear end or annoying person.

Aston Martin: Expensive grand touring car.

Babyslam: Sparkling, light pear cider.

Bad Uns: A bad thing or person.

Banger: A very old car in bad condition.

Blackpool: Seaside resort town in Lancashire.

Blancmange: A sweet opaque gelatinous cake.

Bloody: Adjective/adverb, used to express anger or to emphasize what you are saying in slightly rude way.

Bollocks: Testicles, or more commonly to mean nonsense.

Bornley: Town north of Greater Manchester.

Chap: Man or boy.

Chuffed: Delighted.

Claptrap: Absurd or nonsensical talk or ideas.

Clerkenwell: An area of central London.

Cos: Northern English slang for *because*.

Crossroads: Stage in life to make an important decision.

Daft Pillock: A very stupid or foolish person.

Daft Uns: Offensive term for the insane.

Debenhams: British department store.

East Anglia: The counties of Norfolk and Sussex.

Effing and Blinding: To swear with offensive emphasis.

Fag: Cigarette.

Failssworth: Town north-east of Manchester.

Fancy O'Reilly: Posh, expensive.

Fathom Out: To understand something.

Field Marshall Montgomery: British commander of all land forces involved in Operation Overlord, the code name for the Battle of Normandy.

Fobbed Them Off: To put off with a trick or excuse.

Footballers: Soccer players.

Ford Allegra: A car that was never made.

Four Pence: 1/60th of a pound or 1/3rd of a shilling.

Git: A contemptible person.

Grand National Week: Horse Race near Liverpool.

Halifax: Borough of Calderdale in West Yorkshire.

In Vino Verantis: Latin for "In Wine There Is Truth."

In't: Northern English contraction of the phrase "isn't it."

Jackdaws: Excessively talkative people.

Jibber Jabber: Talk in a rapid, hard to understand way.

Keeping Me Own Council: Reserve one's opinions.

Knob: Vulgar term word for penis.

Know the Ropes: Understand the details.

Lose the Run of Yourself: Get carried away, lose control.

Lowestoft: Coastal town in East Suffolk.

Lucky Dip: Random selection. A counting game.

Meself: Myself.

Mithering: To fuss over or moan about something.

Morris Minor: Small four-seater economy car.

Nietzsche: Nietzsche's *Übermensch*, or Nietzsche's superman, is a creative individual who does not merely follow or obey the laws of others, even the laws of God.

Norfolk: County in the East of England.

Nowt: Northern English slang for *nothing*.

Nuremberg Trials, Germany: 13 trials between 1945: 49 for Nazi's indicted on charges for crimes against peace and humanity.

O'er: Northern English slang for *over*.

Oldham: Borough that borders Greater Manchester

On't: Northern English slang for *on the*.

Our [First Name]: Indicates a family member.

Owt: Northern English slang for *anything*.

Palaver: To talk profusely or idly.

Pinch: To steal something.

Pint of mild: Slightly sweeter beer.

Piss Off: Rude way to tell someone to go away.

Piss: Up: An occasion when a lot of alcohol is drunk.

Pisshead: A person who drinks a lot of alcohol and often.

Poor Sods: Anyone to whom something bad happened.

Retard: Vulgar term for a person with a learning disability.

Riff-Raff: Of a bad reputation or low social class.

Shilling: A former British coin and monetary equal to one twentieth of a pound or twelve pence.

Shite: Vulgar term for *shit* or *nonsense*.

Soren Kirkegaard: Danish philosopher who believed meaning in life resides in accepting oneself as the task.

St. Margaret's: State school for children in Oldham.

Stuck His Oar In: To intrude uninvited on a conversation.

Summat: Northern English slang for *something*.

Supping: Northern English slang for *take a drink by sips*.

T'other: Northern English slang for *the other*.

Tea At The Ritz: Afternoon Tea with teacakes and pastries between lunch and dinner.

Tickle: Sexual intercourse.

Tuppence: Two British pennies.

Waiting Like a Lemon: Stay uselessly in one place.

Walton-on-the-Naze: Family seaside resort.

Walthamstow: A town in the London Borough of Waltham Forest, around 7.5 miles (12 km) northeast of Central London.

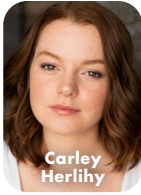
Weetabix: A British popular breakfast cereal made from processed wheat formed into blocks.

Whys and Wherefores: Northern England slang for *the reasons for something*.

Winson Green: HM Prison Birmingham.



Michael Champlin



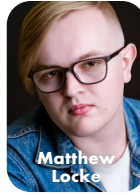
Carley Herlihy



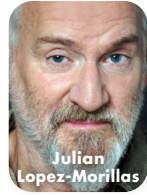
Randall King



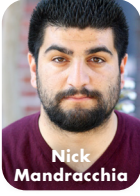
Matthew Kropschot



Matthew Locke



Julian Lopez-Morillas



Nick Mandracchia



Judith Miller



Keith Pinto



Will Springhorn Jr.



Michael Storm

ARTIST BIOGRAPHIES

CAST

Michael Champlin **Inspector Fry, Guard**

Michael is thrilled to be back at The Stage after recently playing Ned in **People Where They Are**. He is also thrilled to return to the world of Martin McDonagh after twelve years, when he directed **The Lieutenant of Inishmore** at Palo Alto Players. Theatre credits include **In Every Generation** (TheatreWorks Silicon Valley), the role of Dr. Watson in **Ken Ludwig's Baskerville: A Sherlock Holmes Mystery** (Hillborn Theatre), and **A Doll's House, Part 2** (Palo Alto Players), for which he received a San Francisco Bay Area Theatre Critics Circle award. "Much love and thanks to Katie, Jack, Henry, & Cain!"

Carley Herlihy **Shirley**

Carley is an actor based in Los Angeles who trained at the Pacific Conservatory of the Performing Arts. Their notable portrayals include the role of Jean in **August: Osage County** and Mairead in **The Lieutenant of Inishmore** at San Jose Stage Company. With a repertoire extending to various California theatres, Carley has performed as Kira in **Xanadu** (San Luis Obispo Repertory Theatre) and roles in **A Christmas Carol** (The Great American Melodrama) and **The Hunchback of Notre Dame** and **Mamma Mia!** (Pacific Conservatory of the Performing Arts).

Randall King* **Arthur, Governor**

Randall is the artistic director and co-founder of San Jose Stage Company. Under his

leadership, The Stage has produced over 200 plays and musicals and premiered over fifty new works, including twenty world premieres. Randall is the recipient of the 2018 City of San José Cornerstone of the Arts Award for providing enduring and effective leadership that contributes to the betterment of the San José arts community. Acting credits include Beverly Weston in **August: Osage County**, Big Daddy in **Cat on a Hot Tin Roof**, Willy Loman in the critically acclaimed **Death of a Salesman** (San Francisco Bay Area Theatre Critics Circle award, 2015), H. C. Curry in **The Rainmaker**, Frank Hamer and the Judge in **Bonnie & Clyde** (TBA Award finalist), EKO in **The Elaborate Entrance of Chad Deity**, Mark Rothko in **Red**, Jack Lawson in **Race** (2013 Standout Contemporary Production, Silicon Valley Awards), Dodge in **Buried Child** (2012 Standout Drama Production, Silicon Valley Small Venue Theatre Awards), Johnny Friendly in **On the Waterfront**, Milan and the Waiter in **Rock 'n' Roll**, Sharky in **The Seafarer** (Top Ten in Theatre in 2009, Bay Area News Group), Ariel in **The Pillowman** (2010 Standout Dramatic Production Award by **Wave** magazine and Artsopolis-sponsored Silicon Valley Small Theatre Awards), and Richard Roma in **Glengarry Glen Ross**. Directing credits include a three-month extended run of **Picasso at the Lapin Agile** by Steve Martin, the world premiere of **Cumberland Blues**, the Grateful Dead musical featuring music and lyrics by Jerry Garcia and Robert Hunter that transferred to San Francisco, the Tuna trilogy (**Greater Tuna**, **A Tuna Christmas**, and **Red, White and Tuna**), **R.F.K.** (SFBATCC award), **Hand to God**, and most recently, the

critically acclaimed production of **Chicago**. He has performed in leading roles at many theatres including San Jose Repertory Theatre, Berkeley Repertory Theatre, Sacramento Theatre Company, and the Alaska Theatre Festival. On screen, Randall has acted in **The Rainmaker** (directed by Francis Ford Coppola), **Mumford** (directed by Lawrence Kasdan), and **The Rock** (directed by Michael Bay). He has also performed in numerous television productions.

Matthew Kropschot Mooney, Hennessy

Matthew is grateful to return to The Stage. Past productions here include **Grand Horizons**, **Sex with Strangers**, **August: Osage County**, **Chicago**, and **The Rocky Horror Show**. Most recently, he played both Cloten and Posthumus in **Cymbeline** (Pacific Repertory Theatre) and reprised his role of Prince Logan in **Sleeping Beauty** at Panto in the Presidio (Presidio Theatre). In 2023 Matthew was voted the sexiest man in Shingle Springs, CA. Apart from acting, he is a writer, filmmaker, dungeon master, and meat eater.

Matthew Locke Clegg, Priest

Matthew is beyond excited to make his San Jose Stage Company debut. Recent credits include Charlie Price in **Kinky Boots** (City Lights Theater Company), and The Baker in **Into the Woods** and Lenny in **Marisol** by José Rivera (San José State University). He recently graduated with a degree in theatre arts from San José State University and hopes to continue making connections with other local artists and companies in the Bay Area!

Julian López-Morillas* Pierrepoint

Julian has been a familiar face to patrons of The Stage for over thirty years in plays including **The Living**, **Betrayal**, **The Pillowman**, **The Seafarer**, **Rock 'n' Roll**, **The Night Alive**, **Great Expectations**, and **Who's Afraid Of Virginia Woolf?** as well as the recent **Meet John Doe** and **Grand Horizons**. Other actor and director credits include stints with American Conservatory Theater, Berkeley Repertory Theatre, Aurora Theatre Company, California Shakespeare Theater, Magic Theatre, and The Eureka Theatre. He is well known as a teacher and lecturer specializing in Shakespeare and was a two-day winner on **Jeopardy**.

Nick Mandracchia Bill, Doctor

Nick returns to The Stage after performing here in **Meet John Doe**, the critically acclaimed **Grand Horizons**, **Othello**, and **The Play That Goes Wrong**. Regional credits include Meadows in **Loot** (Aurora Theatre Company), Cinderella's Prince and the Wolf in **Into the Woods** (Foothill Music Theatre), himself in **The Complete Works of William Shakespeare (Abridged)** (Plethos Productions, 6th Street Playhouse), **Julius Caesar** and **The School for Lies** (Pacific Repertory Theatre), **The Beard of Avon** (Santa Cruz Shakespeare), **The Three Musketeers** and **Pericles** (Marin Shakespeare Company), **Cabaret**, **The Merchant of Venice**, **Coney Island Christmas**, **Amadeus**, **The Elephant Man**, and **Frankenstein** (City Lights Theater Company), **Insignificance** (Dragon Productions), **A Civil War Christmas** (Town Hall Theatre Company), and **The Little Mermaid** (Palo Alto Players).

Judith Miller Alice

Judith has performed in over twenty-eight productions in the forty-one-year history of San Jose Stage Company. She views The Stage as a very special part of her artistic career. Two of the most memorable endeavors here are **Angry Housewives**, which ran for over 200 performances, and **Always... Patsy Cline**, where Judith played her singing idol in two separate productions. The role of Violet Weston in **August: Osage County** garnered a San Francisco Bay Area Theatre Critics Circle nomination for best actress for her and the SFBATCC award for best overall production in the South Bay for The Stage. Other recent credits here include Carla in the West Coast premiere of **Grand Horizons**, Emelia in the new, jazz infused adaptation of **Othello**, and Big Mamma in **Cat on a Hot Tin Roof** (SFBATCC nomination for overall production). Favorite productions with other Bay Area theatres include Ma Joad in **The Grapes of Wrath** (TBA Award finalist for best actor) and Roberta in the West Coast premiere of **Admissions** (SFBATCC award for production, SFBATCC nomination for best female actor in a supporting role) (Los Altos Stage Company), **Vanya and Sonya and Masha and Spike**, **The Laramie Project**, and **A Doll's House, Part 2** (SFBATCC nomination for supporting actor) (Palo Alto Players), **Uncle Vanya** and **Noises Off** (Pear Theatre),

The Other Place and **When the Rain Stops Falling** (Dragon Productions), **New Girl in Town** (42nd Street Moon), and most recently **Madame Armfeldt** in **A Little Night Music** (South Bay Musical Theatre).

Keith Pinto*

Syd

Keith happily returns to The Stage after performing here in **The Play That Goes Wrong**, **Meet John Doe**, **Great Expectations**, **Chicago**, **The Rocky Horror Show**, and **Mamma Mia!** He also acted here in **Hedwig and the Angry Inch**, **Sweeney Todd**, **Hand to God**, **The Wild Party**, and **The 39 Steps**. Keith received a San Francisco Bay Area Theatre Critics Circle award for his role as Bill in **Me and My Girl** (42nd Street Moon) and TBA Awards for his choreography of **Altar Boyz** (Center REPeritory Company) and his role as The Emcee in **Cabaret** (Hillbarn Theatre).

Will Springhorn Jr.*

Harry

Will earned an MFA from Mountview Theatre School in London and a BA from the University of Minnesota. Favorite roles include Melvin and Toxie in **The Toxic Avenger** (San Jose Stage Company), Andy in **An Entomologist's Love Story** (San Francisco Playhouse), and Edmund in **King Lear** (San Francisco Shakespeare Festival). He is an artistic associate at The Stage, where he originated the role of Captain Wentworth in the world premiere of **Persuasion** and the role of Maximilian in the world premiere of **Adiós Mamá Carlota**. Additional credits here include Kent in **reasons to be pretty**, Noah in **The Rainmaker**, Thomas Colleymore in **The Play That Goes Wrong**, Ralph in **Reefer Madness**, Tiger Brown in **The Threepenny Opera**, Buck in **Bonnie & Clyde**, Eddie and Dr. Scott in **The Rocky Horror Show**, Will in **Every Christmas Story Ever Told**, Tom and Tom Jr. in **Reckless**, Ernst in **Cabaret**, George Bailey in **It's a Wonderful Life: A Radio Play**, Harold in **Death of a Salesman**, Lurch in the musical **The Addams Family**, Brother Man in **Cat on a Hot Tin Roof**, and Calhoun in **Bloody Bloody Andrew Jackson**. Will has worked locally with TheatreWorks Silicon Valley, San Francisco Playhouse, Center REPeritory Company, 42nd Street Moon, the San Francisco Shakespeare Festival, Pacific Repertory Theatre, B Street Theatre, Magic Theatre, Woodminster Summer Musicals,

Berkeley Repertory Theatre, and Theatre Rhinoceros. He teaches theatre at Diablo Valley College and West Valley College and is a proud member of Actors' Equity Association. **willspringhornjr.com**

Michael Storm*

Charlie, Guard

Michael has acted extensively throughout the Bay Area for the past twenty-five years. He most recently performed at The Stage in **Othello**. Prior to that, he played the title role in **Julius Caesar**, Antony in **Antony and Cleopatra**, and De Guiche in **Cyrano** with Pacific Repertory Theatre. Michael has also performed with companies including Berkeley Repertory Theatre, California Shakespeare Theater, TheatreWorks Silicon Valley, and the San Francisco Shakespeare Festival. Additional credits at The Stage include **Meet John Doe**, **Glegarry Glen Ross**, **Lonesome West**, **The Beauty Queen of Leenane**, **The Turn of the Screw**, **Inherit the Wind**, and **Of Mice and Men**.

AUTHOR

Martin McDonagh

Playwright

Martin McDonagh has written plays including **The Pillowman** (Tony nominee, Best Play 2005, Olivier Award Winner 2004), **The Lieutenant of Inishmore** (Olivier Award Winner, Best Comedy 2003), **The Beauty Queen of Leenane** (Tony nominee, Best Play 1998), **The Lonesome West** (Tony nominee, Best Play 1999), **A Skull in Connemara**, **The Cripple of Inishmaan**, **The Banshees of Inisher**, **The Retard is Out in the Cold**, and **Dead Day at Coney**. Other works include **Barney Nenagh's Shotgun Circus**, **Suicide on Sixth Street**, **In Bruges**, **Seven Psychopaths**, and **Six Shooter** (Academy Award, Best Live Action Short Film 2006).

CREATIVE TEAM

James Reese

Director

James is an actor and director. Directing credits at The Stage include **The Beauty Queen of Leenane**, **A Skull in Connemara**, and **The Lonesome West** by Martin McDonagh, **True West** by Sam Shepard, **Of Mice and Men** by John Steinbeck, **Inherit the Wind** by Jerome Lawrence and Robert E. Lee, the world premiere of **The Treasure of the Sierra Madre** adapted from the B. Traven novel by Herb Robbins, and **I Hate Hamlet** by Paul Rudnick. He directed the

American premiere of **Trainspotting** by Irvine Welsh and **Babylon Heights** by Irvine Welsh and Dean Cavanagh (Patter Merchant Productions). Select acting roles at The Stage include Lenny in **Of Mice and Men** by John Steinbeck, Chief Bromden in **One Flew Over the Cuckoo's Nest** by Dale Wasserman, Dan in **The Mound Builders** by Lanford Wilson, and Ray in **Lonestar** by James McLure. Select film and television roles include **13 Reasons Why**, **Looking**, **Trauma**, **Nash Bridges**, **Midnight Caller**, **The Long Road Home**, **The Assassination of Richard Nixon**, and **It's Always Something** (directed by Derrick Scocchera and narrated by Stephen Fry).

Ashley Garlick **Costume Designer**

Ashley is a Bay Area actress and costume designer. She performed on stage in **Grand Horizons** at San Jose Stage Company last season and as Carole King in **Beautiful: The Carol King Musical** at Woodminster Summer Musicals this past summer. Favorite costume design credits include **The Rocky Horror Show** and **The Toxic Avenger** (San Jose Stage Company), **Rapture, Blister, Burn** (Lucky Penny Productions, Arty Award), **Dames at Sea** (42nd Street Moon, San Francisco Bay Area Theatre Critics Circle nominee), and **Champagne White is DISASTROUS!** and **Sex and the City LIVE!** (OASIS).

Kimberly Mohne Hill **Dialect Coach**

Kimberly is the current chair of the Department of Theatre and Dance at Santa Clara University and a full professor of voice and speech and acting. She received the 2018 SVCCreates Artist Laureate Award in the offstage category for her work as a director and is known throughout the Bay Area as a dialect coach. Kimberly has coached numerous productions for San Jose Stage Company, including **People Where They Are**, **The Play That Goes Wrong**, **The Lieutenant of Inishmore**, **Sweeney Todd**, **The Rainmaker**, **Persuasion**, **The Threepenny Opera**, **Cabaret**, **On the Waterfront**, **Rock 'n' Roll**, **I Am My Own Wife**, **The Turn of the Screw**, **A Tuna Christmas**, **Greater Tuna**, **I Hate Hamlet**, and the critically acclaimed production of **The Seafarer**, which she also directed. She has coached over 200 productions for such companies as American Conservatory Theater, TheatreWorks Silicon Valley,

Berkeley Repertory Theatre, San Jose Repertory Theatre, City Lights Theater Company, Arizona Theatre Company, Center REpertory Company, Aurora Theatre Company, and Hillbarn Theatre. Most recently, Kimberly completed training with acclaimed voice, text, and presence teacher, Patsy Rodenburg™ and has been designated as a certified Patsy Rodenburg Associate. Up next, she will direct **42nd Street** for Santa Clara University, opening the end of May!

Kristin Hill **Assistant Dialect Coach**

Kristin is a junior at Santa Clara University with a double major in theatre arts (dance emphasis) and communication (leadership communication emphasis). She most recently coached **By the Way, Meet Vera Stark** (Santa Clara University) while simultaneously assistant coaching **People Where They Are** (San Jose Stage Company) and serving as assistant choreographer for **Chicago** (Bellarmine College Preparatory)! Previous dialect coaching credits include **The Game's Afoot** (Santa Clara University), **Matilda** (Notre Dame High School), and **Mary Poppins** (Dartmouth Middle School). Next up, Kristin will play the role of Peggy Sawyer in **42nd Street** at Santa Clara University!

Iliana Karbowski* **Stage Manager**

Iliana is excited to be back at The Stage. She is a recent graduate of the film and theatre program at San José State University where she earned a BA in theatre arts with a minor in radio, television, and film. Previous credits include stage manager for **Bald Sisters**, **The Play That Goes Wrong**, and **People Where They Are** (San Jose Stage Company), wardrobe supervisor for **Mrs. Christie** (TheatreWorks Silicon Valley), and stage manager for **The Hunchback of Seville** and **Marisol** and assistant director and the role of The Narrator for **Into the Woods** (San José State University). @ilianakarbo

Johnny Moreno **Fight Choreographer**

Johnny is a San Jose Stage Company associate artist member, fight choreographer, stuntman, and actor. He has choreographed fights throughout the Bay Area and Taiwan including **The Rainmaker** and **August: Osage County** (San Jose Stage Company) and the world premiere of **The Barbary Coast**, written and directed by Jessa Brie

Moreno, and **Romeo and Juliet** (Napa Valley Shakespeare). Johnny is a recognized stage combatant by the Society of American Fight Directors and a graduate of the American Conservatory Theater Master of Fine Arts program.

Robert Pickering Scenic Designer

Robert is a scenic and lighting designer, theatre technician, artist, craftsman, filmmaker, and educator. His work has been featured across the United States, including the Santa Fe Opera, the Utah Shakespeare Festival, Sarasota Opera, Fort Worth Opera, and recently Redwood Curtain Theatre and San Jose Stage Company in northern California. For over a decade, he served as studio manager, resident designer, and documentary filmmaker for Kentucky Educational Television (KET). For nearly twenty-five years, Robert was the scenic designer and installation coordinator for the Emmy Award winner **It's a Grand Night for Singing** at the University of Kentucky Opera Theatre.

Stephany Puentes Assistant Stage Manager

Stephany is delighted to be assistant stage manager for this production. She is currently a film student at West Valley College. Stephanie was previously a production assistant for **Bald Sisters** and **The Play That Goes Wrong** and most recently the light and sound board operator for **People Where They Are** at The Stage.

Steve Schoenbeck Sound Designer

Steve is the resident sound designer and sound supervisor for San Jose Stage Company. He designed sound for **People Where They Are**, **The Play That Goes Wrong**, **Bald Sisters**, **Othello**, **Grand Horizons**, **Satchmo at the Waldorf**, **Sex with Strangers**, **August: Osage County**, **Great Expectations**, **Chicago**, **The Rocky Horror Show**, **Adiós Mamá Carlota**, **Cat on a Hot Tin Roof**, **Between Riverside and Crazy**, **The Lieutenant of Inishmore**, **Hedwig and the Angry Inch**, **Sweeney Todd**, **Fool for Love**, **Hand to God**, **The Memory Stick**, **Disgraced**, **Rock 'n' Roll**, **Buffalo'ed**, and **Mamma Mia!** You may have also heard his work at venues including San Jose Repertory Theatre (resident sound designer), TheatreWorks Silicon Valley,

American Conservatory Theater, Pear Theatre, San Francisco Playhouse, Marin Theatre Company, Teatro Vision, Arizona Theatre Company, Portland Center Stage, and the Edinburgh Festival Fringe Assembly Theatre. His designs have been honored with a Dean Goodman Choice Award, several San Francisco Bay Area Theatre Critics Circle nominations, and a SFBATCC award for **Great Expectations** at The Stage.

Jenn Trampenau Properties Designer

Jenn is happy to return to The Stage where she previously served as props coordinator for **People Where They Are**, **The Play That Goes Wrong**, **Bald Sisters**, **Othello**, **Grand Horizons**, **Meet John Doe**, **Sex with Strangers**, **August: Osage County**, and **Great Expectations**. She previously worked as a production assistant on **Adiós Mamá Carlota**, **The Rocky Horror Show**, **Chicago**, **The Great Leap**, and **August: Osage County**. Jenn was the light and sound board operator on **Great Expectations** and a set constructor on **The Humans**.

Maurice Vercoutere Lighting Designer

Maurice returns to The Stage where he has been the resident lighting designer for the past two seasons. Some of his work during that time includes **August: Osage County** (San Francisco Bay Area Theatre Critics Circle award), **Satchmo at the Waldorf**, **Othello**, **Grand Horizons**, **Bald Sisters**, and **The Play That Goes Wrong**. Maurice designed lights here for the world premieres of **Buffalo'ed**, **Lolita Road Trip**, and **Tenders in the Fog**, for which he received the Dean Goodman Choice Award for lighting. Other productions at The Stage include **The Glass Menagerie**, **Great Expectations**, **Death of a Salesman**, **Venus in Fur**, **The Threepenny Opera**, and **Disgraced**. He has designed extensively throughout Northern California since the mid-1980s. Central Valley credits include **The Tempest**, **Twelfth Night**, **A Raisin in the Sun**, **Fences**, and **Moon for the Misbegotten** (Sacramento Theatre Company) and **The Front Page** and **Dracula** (Garbeau's Dinner Theater), for which he received Shelly Awards. His work has also been seen in **M. Butterfly**, **Rashomon**, and **Prelude to a Kiss** (TheatreWorks Silicon Valley), **Dottie and the Boys**, **Bully**, and the world premiere of **The House of Yes** (Magic Theatre) **Modigliani** and **Lady Day at Emerson's Bar and Grill**

(Marin Theatre Company) and **Julius Caesar** and **King Lear** (Pacific Repertory Theatre). Maurice was resident lighting designer at The Western Stage for three seasons, where his work includes **Chicago**, **Cabaret**, **The Good War**, **Little Shop of Horrors**, **Judevine**, **The Diviners**, and **Children of a Lesser God**.

LEADERSHIP

Cathleen King Executive Director

Cathleen is the executive director of The Stage and where she has presented over 170 productions and twenty world premieres. She initiated and developed commissions, international partnerships, and co-productions including with Electric Company Theatre in Canada, Irish Theatre Institute in Ireland, El Teatro Campesino, African-American Shakespeare Company, Capital Stage, Ice Nine (The Grateful Dead), and Roshi Productions. Cathleen secured the acquisition of our property at 490 South First Street and is helming the planning and development of a new theatre facility and company home. She was a founding member of the Coalition of Bay Area Theaters, responsible for negotiating the establishment of a collective bargaining agreement with Actors' Equity Association for mid-size theatre companies in the Bay Area region. Cathleen produced the Downtown Arts Series in partnership with the City of San Jose, serving a diverse community of artists and emerging arts organizations for over ten years. She has served on the Theatre Service Committee for Theatre Bay Area, the SoFA Leadership Committee, and recently participated as a member of the Greater Downtown San Jose Economic Recovery Task Force which leveraged additional funding for the arts in San Jose. In addition, she has served on grant panels for the City of San Jose and SVCreates, among others, and also served as an Arts Advisory Council member for the performance venue design process for Evergreen Valley College. Cathleen established a three-year educational outreach partnership with Notre Dame High School in San Jose and has adjudicated for many local high school and college theatre programs. She is the recipient of several awards including the 2018 Cornerstone of the Arts Award from the San José Arts Commission, as well as the 2018 Paine Knickerbocker Award for Continuing Contributions to Bay Area Theatre from the San Francisco Bay Area Theatre Critics Circle.

Randall King* Artistic Director

Randall is the artistic director and co-founder of San Jose Stage Company. Under his leadership, The Stage has produced over 200 plays and musicals and premiered over fifty new works, including twenty world premieres. He is the recipient of the 2018 City of San José Cornerstone of the Arts Award for "enduring and effective leadership that contributes to the betterment of the San José arts community." Acting credits include Beverly Weston in **August: Osage County**, Big Daddy in **Cat on a Hot Tin Roof**, Willy Loman in the critically acclaimed **Death of a Salesman** (San Francisco Bay Area Theatre Critics Circle award, 2015), H. C. Curry in **The Rainmaker**, Frank Hamer and the Judge in **Bonnie & Clyde** (TBA Award finalist), EKO in **The Elaborate Entrance of Chad Deity**, Mark Rothko in **Red**, Jack Lawson in **Race** (2013 Standout Contemporary Production, Silicon Valley Awards), Dodge in **Buried Child** (2012 Standout Drama Production, Silicon Valley Small Venue Theatre Awards), Johnny Friendly in **On the Waterfront**, Milan and the Waiter in **Rock 'n' Roll**, Sharky in **The Seafarer** (Top Ten in Theatre in 2009, Bay Area News Group), Ariel in **The Pillowman** (2010 Standout Dramatic Production Award by *Wave* magazine and Artsopolis-sponsored Silicon Valley Small Theatre Awards), and Richard Roma in **Glengarry Glen Ross**. Directing credits include a three-month extended run of **Picasso at the Lapin Agile** by Steve Martin, the world premiere of **Cumberland Blues**, the Grateful Dead musical featuring music and lyrics by Jerry Garcia and Robert Hunter that transferred to San Francisco, the Tuna trilogy (**Greater Tuna**, **A Tuna Christmas**, and **Red, White and Tuna**), **R.F.K.** (SFBATCC award), **Hand to God**, and most recently, the critically acclaimed production of **Chicago**. He has performed in leading roles at many theatres including San Jose Repertory Theatre, Berkeley Repertory Theatre, Sacramento Theatre Company, and the Alaska Theatre Festival. On screen, Randall has acted in **The Rainmaker** (directed by Francis Ford Coppola), **Mumford** (directed by Lawrence Kasdan), and **The Rock** (directed by Michael Bay). He has also performed in numerous television productions.

PRODUCTION AFFILIATIONS

Actors' Equity Association

Actors' Equity Association (AEA) was founded in 1913 and is the US labor union that represents more than 51,000 actors and stage managers. Equity seeks to foster the art of live theatre as an essential component of society and advances the careers of its members by negotiating wages, working conditions, and providing a wide range of benefits, including health and pension plans. Equity is a member of the AFLCIO and is affiliated with FIA, an international organization of performing arts unions. www.actorsequity.org | [#EquityWorks](https://twitter.com/EquityWorks)

Broadway Licensing

Broadway Licensing Global and its family of imprints (Broadway Licensing, Dramatists Play Service, Playscripts, and Stageworks) is the global leader in theatrical licensing and distribution. The iconic works represented epitomize the greatest collection of authors, composers, lyricists, and underlying rights holders across the globe including Arthur Miller, Tennessee Williams, Lynn Nottage, Alan Menken, Stephen King, the Bee Gees, The Beatles, and Harry Potter Theatrical

Productions. The Broadway Licensing Global collection of titles represents an astonishing 40 Tony Award® and 49 Pulitzer Prize-winning works. The company leverages its team's expertise in licensing, theatrical production, theatre education, and content creation to diversify, strengthen, and rapidly expand its portfolio into new sectors and markets. Founded in 2017, Broadway Licensing has quickly scaled and, as of 2022, the company represents eight of the top ten most produced plays in professional theatres and nine of the top ten most produced plays in high schools. In 2020, Broadway Licensing Global launched the Emmy Award® nominated streaming platform Broadway On Demand, offering exclusive theatrical content, interactive events, and original programming. Additionally, Stageworks Productions, the original live stage content creation arm dedicated to the development of innovative, theatrical intellectual properties has developed several world premiere musicals which have been produced in over 90 countries. In all, the combined force of the Broadway Licensing family of imprints continues to grow, with a singular goal to make everyone in the world a theatre person.

* Member of Actors' Equity Association, the Union of Professional Actors and Stage Managers.

All images and/or content provided by San Jose Stage Company staff, contractors, and/or creative artists unless otherwise credited. Opinions expressed by contractors, contributors, and/or creative artists do not necessarily reflect the views of San Jose Stage Company. Photo credits are included as provided.

SAN JOSE STAGE COMPANY

MISSION

Through powerful, provocative, and profound theatre, San Jose Stage Company (The Stage) seeks to expand community, forge creative partnerships, and challenge individuals in order to illuminate the human condition.

STAFF

Artistic Director.....	Randall King
Executive Director	Cathleen King
Associate Artistic Director	Allison F. Rich
Production Manager	Matt Casey
Technical Advisor	Robert Pickering
Master Electrician	Aaron Gin
PR Manager	Jonathan White
Digital Media	Caitlin Elizabeth Daniel Zapien
Development Consultant	Amy Winkleblack
Business & Operations Associate.....	Tor-Elias Johnson
Box Office & Patron Services Manager	Mac Williams
Patron Services Associate.....	Patrick Rivera
Photographer.....	Dave Lepori
Graphics	Stephanie Whigham
Playbill Production	Third Act Services
Associate Artists	Ashley Garlick Kenneth Kelleher Johnny Moreno Giulio Cesare Perrone Steve Schoenbeck Will Springhorn Jr. Halsey Varady Maurice Vercoutere

BOARD OF DIRECTORS

President.....	Jason St. Claire
Secretary	Richard Keit
Legal Counsel	Richard T. Hilovsky
Members.....	James T. Beall Nicolle Burnham David Chamberlain Cathleen King Randall King Patricia McDonald Michael Van Every
Member Emeritus/Capital Campaign Chair	Jerry Strangis

SAN JOSE STAGE COMPANY

ABOUT THE STAGE

Now in its 41st season, San Jose Stage Company is recognized as the South Bay's leading professional theatre company, having earned a reputation for artistic excellence through powerful, provocative, and profound work that illuminates the human condition. The Stage is devoted to new, cutting-edge work and reinterpreting American literature and world classics using innovative stagecraft, multi-media that propels the narrative, and accomplished, local actors in true repertory style. With the farthest seat in the house no more than fifteen feet from the three-quarter thrust stage, the connection between actor and audience is profoundly visceral. Attracting more than 30,000 patrons to downtown and employing more than 150 local artists annually, San Jose Stage Company continues to be a vital force in the region's economic and creative landscape. As a strong community partner, The Stage has been the creative home for more than 500 performance groups including San Jose Jazz and Notre Dame High School, working together to engage, provoke, and inspire current and future theatre participants and arts advocates. The Stage has produced over 200 productions, including twenty world premieres and fifty new works and is ranked as the second largest professional theatre and eighth largest performance arts organization in Silicon Valley by the *Silicon Valley/San Jose Business Journal*. www.thestage.org

LAND ACKNOWLEDGMENT

The Stage respectfully acknowledges the benefits and origins of its venue. We present our productions on land stolen from the Indigenous peoples in the region of the Ohlone Tribe. Over the years we have brought Indigenous shamans from the Ohlone Tribe into the space to bless the building and ask permission to continue the "oral tradition" of storytelling. We honor and recognize that the Ohlone people are a vital part of our community today. We are grateful to live, learn, and work on their ancestral lands, and continue the tradition of oral storytelling. The Stage is always seeking to deepen our connections with the Indigenous community. Please contact us with suggestions for ways we can continue to support Indigenous people.

BOX OFFICE INFORMATION

The box office is open one hour prior to curtain for will call and walk-up ticket purchases on performance days.

Subscribers may exchange their tickets up to one business day in advance of their scheduled performance. Exchanges are made on a seat availability basis and we cannot guarantee the same assigned seats.

Special discounts are available to students, seniors over sixty, and groups of ten or more.

You can also contact boxoffice@thestage.org for subscription questions, ticketing policies, or other information about The Stage.

408.283.7142
boxoffice@thestage.org
San Jose Stage Company
490 South 1st Street
San Jose, CA, 95113

PERFORMANCE SCHEDULE

Wednesday	7:30 PM
Thursday	7:30 PM
Friday	8:00 PM
Saturday	2:00 PM
Saturday	8:00 PM
Sunday	2:00 PM

TICKET PRICES

	CTR	LR SIDE	LR
Previews (Wed-Thu):	\$40	\$37	\$34
Previews (Friday):	\$43	\$40	\$37
Opening Gala (Sat):	\$74	\$69	\$64
Wednesday Evenings:	\$50	\$47	\$43
Thursday Evenings:	\$52	\$49	\$45
Friday Evenings:	\$56	\$52	\$47
Saturday Matinees:	\$56	\$52	\$47
Saturday Evenings:	\$62	\$58	\$54
Sunday Matinees:	\$56	\$52	\$47

Tickets subject to additional fees.

INSTITUTIONAL SUPPORT

San Jose Stage Company gratefully acknowledges our government, foundation, and corporate partners whose support allows The Stage to present bold, diverse, and innovative new work.

GOVERNMENT PARTNERS CIRCLE

California Nonprofit Performing Arts Grant
California Venues Grant
The County of Santa Clara
City of San Jose Office of Cultural Affairs

FOUNDATIONS & VISIONARIES CIRCLE

The Applied Materials Foundation
Robert E. and Adele M. Boydston Charitable Foundation
Brandenburg Family Foundation
KIA Foundation
The David and Lucile Packard Foundation
The Richardson Family Foundation
The Rotary Club of San Jose
The Shubert Foundation
SV Creates
Swenson Foundation

CORPORATE & LEADERSHIP CIRCLE

\$25,000+

Republic Urban Properties
Swenson

\$10,000+

Urban Catalyst

\$5,000+

Boccardo Management
Core Companies
Google, Inc.

MTM Building Group
Strangis Properties

\$2,500+

Bay 101
Bozzuto Insurance Services
Cornerstone Earth Group
DAL Properties | Terrascope Ventures LLC
HMH Engineers
Lincoln Properties

LPMD Architects
McCarthy Ranch
Morgan Stanley
Orange Barrel Media
San Jose Water Company
The Schoennauer Company

\$1,500+

Bank of the West
Blach Construction
Chicago Title
Insurance Company

Cox Castle Nicholson
Duran and Venables Inc.
Form4 Architecture
The Morley Bros

Republic Services, Inc.
San Jose Water Company
Valley Water

\$1,000+

SDS NexGen Partners

\$500+

Adobe

INDIVIDUAL & BUSINESS SUPPORT

LEGACY CIRCLE | \$50,000+

Marilyn Taghon

FOUNDER'S CIRCLE | \$25,000+

Robert J. Bettencourt
Ronald & Ann Whyte

DIRECTOR'S CIRCLE | \$10,000+

Mark Petersen

ASSOCIATE'S CIRCLE | \$5,000+

Greg M. Bettencourt
Peter & Barbara Dehlinger
Kyra & Hal Hubis
Richard & Peggy James
James Kleinrath & Melody Singleton
Dave & Elizabeth Monley
Jason St. Claire
Suzanne Wittrig & Alfonso Banuelos, MD

DESIGNER'S CIRCLE | \$2,500+

Cheryl Booton & Robert Mannell
Kathleen Cohen
Richard & Julie Hilovsky
Robert Leininger & Judy Rookstool
Howard Lyons
Lyle Merithew & Eileen Sandra Swirsky
James Rees
Judith Miller Siebenthal*,
in memory of Kevin Blackton

ACTOR'S CIRCLE | \$1,000+

Iris Berke
Bradley Chibos & Pauline Moore
Sarah Clish, in memory of Nancy Clish
Patricia Curia
Mark Dickson
George & Donna Erickson
Aiko Fadness
Clayton & Sandra Feldman
Mary Feldman & Richard Morris
Katherine Mason
Jennifer Mullins
Jeff & Elaine Neeley
Arlene Okerlund
Daniel Pappone
The Richardson Family,
in honor of Norman Gee
Patrick Smith
Jeanne Torre*
KT & Mark Tucker
Nadejda & Mark Waite
Peter K. Wanger Jr.

BENEFACTOR'S CIRCLE | \$500+

Russell Alongi
Max Beckman-Harned*
Mike & Jan Bergkamp
Virginia Carpio
Cindy Chavez & Mike Potter
Suzanne Currie Noble
David & Liyuza Eisbach
Kaye Evleth & Robert Burns
Rev. John & Marcia Freeseemann
Lucia Gilbert
Robert & Maxine Halem
Gloria Hom
Marnie Kamzan & Steve Grant
Richard Keit & Ru Weerakoon
Marsha Jones
Ed Lee
Judith Marlin
Norvelle Ortega Benevento
Marilyn Sefchovich
Richard Singleton
Clinton & Loni Stark*
Jeff & Cathie Thermond
Barbara Vold
Wanda Waldera
Lisa & Jeff Westerinen
Diana Wirt
Anne Yoshiwara

PATRON'S CIRCLE | \$250+

Gina & Brian Adams
Bob Ainsworth
Blanca Alvarado
Rebecca & David Ayer
Valerie Ball
Bob & Susan Biskeborn
Patricia Rubino Brunetti
Mary Chin
Lloyd Darknell
Flavia Geist & Donald Polensky
Mel Goertz
Linda Ho & James Von De Bur
Richard A. & Cynthia A. Lake
Jan & Sofia Laskowski
John G Maier
Carolyn McInnes
Barbara Nilsen
Phyllis Perez-Sorensen
Madalyn Radlauer
Glenn Reed
James Reilly
Marvin Sabado
Charles & Norma Schlossman
Joan & Peter Sharrock
Michael Strom

INDIVIDUAL & BUSINESS SUPPORT

Victoria Taketa
Dave & Michelle Tang
Michael B Wisper
La Donna Yumori-Kaku

FRIEND'S CIRCLE | \$100+

Anonymous
Adonna J Amoroso
Kent & Barbara Anderson
Cecil Anison
Erin Barclay
Kathryn Barclay
Bob Baylor
Thomas Becker
Robert & Elaine Benoit
Gail Boesch
Jane & Link Bradley
Bob Brownstein
Lisa Buchanan
Steven & Karin Chase
Catherine Coe
Robert Creth
Ronald Danielson
Marlin Deckert
Paul & Connie Del Vigna
Lynn Dobson
Dr. & Mrs. Richard Dorsay
Jerry Dyer
Marty Feldman
V. Gelczis & M. Diamond
The George Family, in memory of

Mary Jane LeFebvre
Marilynn Gilmore
Brian Glick
Martin Gorfinkel
Barbara Gottesman
Barbara Groth
Jane Hiatt
Darci Hill
Jim & Sheila Hill
Mary Idso
Teresa Jacobsen
Dennis Keane
Diana Keith
Robert & Mary Kelly
Derick & Christel Kennedy
Harvey Kohs
Rick LaFrentz
Douglas & Mary Ann Le Blanc, in
 honor of Jennifer Le Blanc
Liz Lillard-Bernal
Joseph Maggolino
Maria Marquis
Carole Mauss
The McBurney/Lin Family
Jean Meyer
Jennifer Michael
Christine Miller
Michael Miller
E. Mireault
Sandra Moll
Alan Moo & Barbara Park
Peter Muller

Robert Pickering
Jack & Jessica Powell
Madalyn Radlauer
Matthew Reilly & April Durrett
Monika Restifo
Michelle Ruscetta
Assaf Sagi
Cyril Scott
Pamela & John Scott
Jack Shannon
Joan Smith
Neville Spadafore
Jane Starbird
Patrice Steiner
Laura Sternberg
Jim Tellefson
Nicole Tung, in memory of Dottie
 Lester White
J.G. & Suzanne Van Stee
Rose Wahlin
Christine Wait
Erik & Judith Walberg
Linda Walton
Rebecca Wheale
Benjamin White
Mark Williams
Stan Williams
Consuelo Yepiz
Cecily & Fernando Zazueta

*Reflects contributions received
through March 15, 2024.

LEGACY GIFTS

We express gratitude to the following individuals and organizations for their generous legacy gifts:

Jeffra & Michael Cook whose legacy gift will support actors and designers initiatives.

Jane & Ed Seaman | Marilyn Taghon | Ronald & Ann Whyte

For more information about Legacy Gifts please email development@thestage.org

FRONT OF HOUSE VOLUNTEERS

Morgan Bohac
Lee Brunngrabber
Susan Buchs
Willa Cao
Nancy Chan
Dan Coyle
Ebonye Davis
Claudia Druhan
Linda Eckstone

Manju Gnyani
Lynnea Haegen
Garry Johnson
Daniel Katzen
Patrick Kelly
Merryl Kravitz
Linda Lappin
Lucinda Layton
Ben Lee

Lisa Lovejevnska
Polina Lovjevnska
Alex McKale
Pam McLean
Pedja Miskin
Sarireh Nademi
Ralph Occipint
Holly Pikerling
Lynn Repetsky

Susan Shalit
Melinda Sheehan
Brent Shiramizu
Mabel Shiramizu
Joan Smith
Gerald Smolovitz
Rebecca Smolovitz
Phyllis Sorenson
Diane Thorne

Anthony Tupe
Cindy Weintraub
Joyce Weissman
Carmen Zahiralis
Chris Zegelin
Weiqi Zhao

INSTITUTIONAL SUPPORT

GOVERNMENT PARTNERS CIRCLE

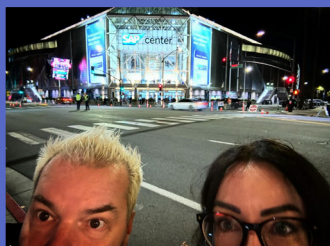


FOUNDATIONS & VISIONARIES CIRCLE



CORPORATE & LEADERSHIP CIRCLE





You never know who you'll see Downtown.

And you'll never believe all you can do. Home-grown shops, restaurants, clubs, dives, festivals, the Arts, and so many more random things. Whatever happens, post it to #DTSJ, and you could be in the next ad. See you downtown.

PARK SJ

90 MINUTES FREE

ParkSJ.org



Scan to see the latest downtown happenings.



Presented by our downtown community and the San Jose Downtown Association.