

THE STAGE

POWERFUL.
PROVOCATIVE.
PROFOUND.

HOLIDAY COMEDY

A SHERLOCK CAROL

BY **MARK SHANAHAN**

DIRECTED BY **KENNETH KELLEHER**

NOV 20 – DEC 15, 2024

FROM THE ARTISTIC DIRECTOR

Welcome! We're thrilled to present the San Jose Stage Company holiday production of **A Sherlock Carol** by Mark Shanahan, a festive celebration that brings joy and a touch of magic to the season.

This time of year is special. It's a chance to come together with friends, loved ones, and our community in the spirit of celebration. The holiday season always brings a mix of joy and reflection as we look back on the year's journey. It also lets us anticipate a new year, filled with possibilities, fresh hopes, and courageous aspirations.



With a fascinating holiday offering, described by *The New York Times* as "a clever, crowd-pleasing holiday comedy that happens also to be a murder mystery," Mark Shanahan brilliantly combines iconic characters from **A Christmas Carol** with the equally iconic detective Sherlock Holmes created by Sir Arthur Conan Doyle. Intriguing, with more than a few surprises, it also invites us to join the season and reflect on generosity, forgiveness, and transformation, while reminding us of the redemptive power of community, friendship, and kindness. Holmes, like Scrooge, is famously known for his isolation and skepticism, but he learns that even the most logical mind can be moved by the holiday spirit. With ghostly visitations and unexpected turns, this play brings a wonderfully fresh take on a classic story.

Accomplished director Kenneth Kelleher assembles yet another brilliant creative team and outstanding cast for The Stage. Veteran actors Julian López-Morillas and L. Peter Callender shine alongside audience favorites Keith Pinto, Li-Leng Au, Anjoli Aguilar, and Mike Storm, in an ensemble performance we truly hope brings you comfort and joy.

As we look ahead to the new year, we're excited to invite you back for the next three productions of our 42nd season. The first is a bold adaptation by acclaimed writer-director Thomas Ostermeier of **An Enemy of the People** by Henrik Ibsen, crafting the esteemed play into a modern take on perennial themes of truth, power, and public responsibility in a way that resonates deeply with our current times. Ostermeier strips the play to its essence and confronts us with challenging questions about integrity and the cost of standing alone, making it as thought-provoking as it is compelling.

We follow this serious endeavor with **The Underpants** by Steve Martin, a sharp and witty comedy that takes a hilarious look at love, lust, and absurd social expectations. Keeping things light, we then spring into summer with the heartwarming musical **Sweet Charity**, a story full of hope, resilience, and the power of second chances, written by Neil Simon and set to an unforgettable score by Cy Coleman and Dorothy Fields.

Between then and now, please join us on December 17th for our **Sounds of the Season Holiday Bash!** It promises to be a really festive night featuring performances by Adrienne Herro, Allison F. Rich, Will Springhorn Jr., Jonathan Rhys Williams, and the Nineteen Jazz Orchestra.

In this season of giving, we humbly but also somewhat urgently invite you join our "24/25 Help Us Thrive" year-end giving campaign. The arts have not yet recovered from the fiscal ravages of the pandemic and your support is essential to our mission of creating bold, innovative theater and sustaining opportunities for local artists, storytellers, and technicians. Without you, the transformative power of The Stage is at risk. Now, more than ever, is the moment to ensure that The Stage remains a place of exploration, revelation, and transformation for years to come. Thank you for standing with us and being part of our journey.

God bless us, everyone!

Randall King
Artistic Director

SAN JOSE STAGE COMPANY

presents

A SHERLOCK CAROL

By Mark Shanahan

L. Peter Callender*
Julian López-Morillas*
Keith Pinto*
Li-Leng Au
Mike Storm
Anjoli Aguilar

Scenic & Projections Designer
Jonathan Williams

Costume Designer
Lauren Suiter

Lighting Designer
Maurice Vercoutere

Sound Designer
Steve Schoenbeck

Properties Coordinator
Jenn Trampenau

Dialect Coach
Li-Leng Au

Stage Manager
Iliana M. Karbowski*

Director
Kenneth Kelleher^o

* Member of Actors' Equity Association. This theater operates under an agreement with Actors' Equity Association, the Union of Professional Actors and Stage Managers in the United States.



^o The director is a member of the Stage Directors and Choreographers Society, a national theatrical labor union.



Originally produced by Raymond Bokhour and Drew McVety

A Sherlock Carol is presented by special arrangement with Broadway Licensing, LLC, servicing the Dramatists Play Service imprint. www.dramatists.com

THE STAGE

SAN JOSE STAGE COMPANY, 490 South 1st Street, San Jose, CA, 95113

www.thestage.org • 408.283.7142 • boxoffice@thestage.org

CAST

Sherlock Holmes	L. Peter Callender*
Ebenezer Scrooge	Julian López-Morillas*
Dr. Timothy Cratchit, Others	Keith Pinto*
Emma Wiggins, Others	Li-Leng Au
Dr. Watson, Others	Mike Storm
The Countess, Others	Anjali Aguilar

CREATIVE TEAM

Director	Kenneth Kelleher°
Scenic and Projection Designer	Jonathan Williams
Costume Designer	Lauren Suiter
Lighting Designer	Maurice Vercoutere
Sound Designer	Steve Schoenbeck
Properties Coordinator	Jenn Trampenau
Dialect Coach	Li-Leng Au
Stage Manager	Iliana M. Karbowski*

PRODUCTION TEAM

Master Electrician	Aaron Gin
Scenic Crew	Meredith King
Scenic Painter	Bill Vujevich
Electrician	George Sowl
Production Assistant	Cheyenne Bacon Steph Puentes

Special Thanks	Berkeley Repertory Theatre City Lights Theater Company Jewel Theatre Company Pacific Repertory Theatre San José State University Santa Clara University Silicon Valley Shakespeare Stanford University
----------------------	---

The performance lasts approximately two hours and twenty minutes. There is one intermission.

Please note the location of all exits.

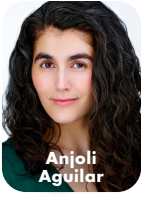
Please check to see that all electronic and mobile devices are turned off during the performance.
The use of cameras or any recording equipment in the theater is strictly forbidden.

For your safety and the safety of our performers,
do not step onto the set or stage nor touch any props or set pieces.

COMMUNITY PARTNERS

Academic Coffee • Contemporary Asian Theater Scene

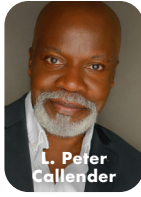




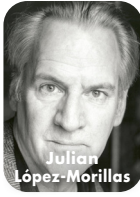
Anjoli
Aguilar



Li-Leng
Au



L. Peter
Callender



Julian
López-Morillas



Keith
Pinto



Mike
Storm

ARTIST BIOGRAPHIES

Anjoli Aguilar

The Countess, Others

Anjoli is pleased to perform in her first production with The Stage. She earned her BA in theatre from San Francisco State University and is taking classes at the San Francisco Circus Center. She just played Fanny Dashwood and Lucy Steele in the Kate Hamill adaptation of **Sense and Sensibility** at Pacific Repertory Theatre. Anjoli also recently co-adapted, produced, and starred in a two-person production of *The Tempest* titled **2empest** at Eclectic Box. Additional credits include Romeo, Jesus in **Much Ado About Lebowski**, and Mona "Hatchet+Face" Malnorowski in **Cry-Baby**. "Con Mucho Cariño, Nonni!"

Li-Leng Au

Emma Wiggins, Others

Li-Leng is delighted to be returning to The Stage, previously working here on **Great Expectations**. She trained at Rose Bruford College in the UK and physical theatre at London International School of Performing Arts (LISPA). She is fortunate to have worked in theatre, television, and film in the UK, Australia, and US. Highlights include **Arquiem** (National Theatre), **Top Girls** (Melbourne Theatre Company), the Australian regional tour of **Sadako and the Thousand Paper Cranes**, and **Twelfth Night** (SPARC Theater). She was honored to be part of the originating cast of, multi-award-winning **My Neighbour Totoro** for the Royal Shakespeare Company.

L. Peter Callender*

Sherlock Holmes

Peter is the former artistic director of African-American Shakespeare Company, former guest director at American Stage in St. Petersburg and Westcoast Black Theater Troupe in Sarasota, and is an associate artist at New York Classical Theatre. He guest lectured at Stanford University for three years, teaching acting Shakespeare and

fundamentals of directing. He has conducted master classes in acting at Emory University in Atlanta and at The Juilliard School in New York, where he received his formal training in theatre. Peter is pleased to return to The Stage after a triumphant run as Louis Armstrong in **Satchmo at the Waldorf**.

Julian López-Morillas*

Ebenezer Scrooge

Julian has been a familiar face to patrons of The Stage for over thirty years in plays including **Who's Afraid Of Virginia Woolf?**, **The Living, Betrayal, The Pillowman, The Seafarer, Rock 'n' Roll, The Night Alive, Great Expectations, Meet John Doe, Grand Horizons**, and most recently in **Hangmen**. Other work as both actor and director has included stints with American Conservatory Theater, Berkeley Repertory Theatre, Aurora Theatre Company, the Berkeley Shakespeare Festival, and Magic Theatre and Eureka Theatre in San Francisco. He is well known as a teacher and lecturer specializing in Shakespeare, and has performed in all of his plays. Julian was also a two-day winner on **Jeopardy!**

Keith Pinto*

Dr. Timothy Cratchit, Others

Keith happily returns to The Stage after performing here in **Dirty Rotten Scoundrels, Hangmen, The Play That Goes Wrong, Meet John Doe, Great Expectations, Chicago, The Rocky Horror Show, and Mamma Mia!** You may have also seen his performances in **Hedwig and the Angry Inch, Sweeney Todd and Hand To God**, as well as **The Wild Party and The 39 Steps**. He received a San Francisco Bay Area Theatre Critics Circle award for his role as Bill Snibson in **Me and My Girl** (42nd Street Moon) and TBA Awards for his choreography of **Altar Boys** (Center REPertory Company) and for his performance as The Emcee in **Cabaret** (Hillbarn Theatre & Conservatory).

Mike Storm

Dr. Watson, Others

Mike has acted extensively throughout the Bay Area over the past twenty-five years. Recent credits include **Othello** and **Hangmen** here at The Stage, and **Hamlet** this past summer with New Canon Theatre Co. Additional credits include work with Berkeley Repertory Theatre, California Shakespeare Theater, TheatreWorks Silicon Valley, the Livermore Shakespeare Festival, the Alabama Shakespeare Festival and the San Francisco Shakespeare Festival, among others. Other productions at The Stage include **Meet John Doe**, **The Lonesome West**, **Inherit the Wind**, **The Turn of the Screw**, **The Beauty Queen of Leenane**, **Of Mice and Men**, and **Inspecting Carol**.

CREATIVE TEAM

Mark Shanahan

Playwright

Mark is an actor, director, playwright, and teacher. He is the author of the Off-Broadway play **A Sherlock Carol**, and **The Dingdong**, **A Merry Little Christmas Carol**, and **A Murder At Ferry Hall**. Additionally, he is the creator and author of original radio drama for White Heron Radio Theatre and **The Ghost Light Series** on NPR, an Edgar Award nominee for his adaptation of **The Chronology Protection Case**, and co-writer of the short screenplay **Kill Me** (Adirondack Film Festival). His directing work has been seen extensively on stages around the country at the Alley Theatre, Westport Country Playhouse, Irish Repertory Theatre, White Heron Theatre Company, Florida Repertory Theatre, George Street Playhouse, Virginia Stage Company, Penguin Rep Theatre, Fulton Theatre, Arkansas Repertory Theatre, TheatreSquared, and the Hudson Stage Company. As an actor, he performed on Broadway in **The 39 Steps** and **Philadelphia, Here I Come!**, Off-Broadway in **Tryst**, **The Shaughraun**, **Small World**, **Checkers**, and **As Bees in Honey Drown**, and on numerous regional stages. Mark is the curator of the Script In Hand Series and Westport Country Playhouse Radio Theater. He is a long time faculty member at Fordham University as well as JWS, teaching courses on Hitchcock, film adaptation, storytelling, and playwrighting. He earned a BA from Brown University and an MA from Fordham University. www.mark-shanahan.net

Kenneth Kelleher^o

Director

Kenneth has worked as a director in the Bay Area for over thirty years. His work has been seen at TheatreWorks Silicon Valley, San Jose Repertory Theatre, San Francisco Shakespeare Festival, B Street Theatre, Sacramento Theatre Company, California Shakespeare Festival, Idaho Shakespeare Festival, Pacific Repertory Theatre and extensively here at The Stage.

Iliana M. Karbowski*

Stage Manager

Iliana is excited to be back at The Stage for **A Sherlock Carol**. She is a graduate of the film and theatre program at San José State University where she earned a BA in theatre arts with a minor in radio, television, and film. Her previous credits include stage manager for **Bald Sisters**, **The Play That Goes Wrong**, **People Where They Are**, **Hangmen**, **Dirty Rotten Scoundrels** and **The Smuggler** (San Jose Stage Company), wardrobe supervisor for **Mrs. Christie** (TheatreWorks Silicon Valley), and stage manager for **The Hunchback of Seville** and **Marisol** and the assistant director and the role of The Narrator for **Into the Woods** (San José State University).

Steve Schoenbeck

Sound Designer

As our resident sound designer, Steve has designed sound for very nearly every production since 2017 including **The Smuggler**, **Dirty Rotten Scoundrels**, **People Where They Are**, **The Play That Goes Wrong**, **Grand Horizons**, **Satchmo at the Waldorf**, **Sex with Strangers**, **Great Expectations**, **The Rocky Horror Show**, **Cat on a Hot Tin Roof**, **The Lieutenant of Inishmore**, **Hedwig and the Angry Inch**, **Sweeney Todd**, and **Hand to God**. You may have also heard his work at San Jose Repertory Theatre where he was also resident sound designer), and at TheatreWorks Silicon Valley, American Conservatory Theater, San Francisco Playhouse, Marin Theatre Company, Pear Theatre, Teatro Visión, Arizona Theatre Company, Portland Center Stage, and Assembly Theatre at the Edinburgh Festival Fringe. His designs have been honored with a Dean Goodman Award, several San Francisco Bay Area Theatre Critics Circle nominations and an SFBATCC award for **Great Expectations**.

Lauren Suiter **Costume Designer**

Lauren graduated from San José State University in 2023. She now spends most of her time working backstage on wardrobe and stitching in costume shops around the Bay Area, but she is pleased to now step into the chaotic world of costume design for the first time since graduating.

Jenn Trampenau **Properties Coordinator**

Jenn is happy to be returning to The Stage where she previously served as properties coordinator for **Dirty Rotten Scoundrels**, **Hangmen**, **People Where They Are**, **The Play That Goes Wrong**, **Bald Sisters**, **Othello**, **Grand Horizons**, **Meet John Doe**, **Sex with Strangers**, **August: Osage County**, and **Great Expectations**. Previous credits at The Stage include production assistant on **Adiós Mamá Carlota**, **The Rocky Horror Show**, **Chicago**, **The Great Leap**, and **August: Osage County**, light and sound board operator for **Great Expectations**, and the set crew of **The Humans**.

Maurice Vercoutere **Lighting Designer**

Maurice returns to the Stage where he has been the resident lighting designer for the past two seasons. Some of his work during that time includes **August: Osage County** and **Satchmo at the Waldorf**, both nominated for San Francisco Bay Area Theatre Critics Circle awards. Other designs include **Othello**, **Grand Horizons**, **Bald Sisters**, **The Play That Goes Wrong**, **People Where They Are**, **Hangmen**, and **Dirty Rotten Scoundrels**. He has designed lighting for three world premieres at The Stage: **Buffalo'ed**, **Lolita Road Trip**, and **Tenders in the Fog**, for which he received the Dean Goodman Award for Best Lighting. Other productions at The Stage include **The Glass Menagerie**, **Great Expectations**, **Death of a Salesman**, **Venus in Fur**, **The Threepenny Opera**, and **Disgraced**. He has designed extensively throughout Northern California since the mid-1980s. In the Central Valley his work was seen at the Sacramento Theatre Company where he designed productions of **The Tempest**, **Twelfth Night**, **A Raisin in the Sun**, **Fences**, and **A Moon for the Misbegotten**, and at Garbeau's Dinner Theatre where he received Shellie Awards for **The Front Page** and **Dracula**. His work has also been seen in **M. Butterfly**, **Rashomon**,

and **Prelude to a Kiss** (TheatreWorks Silicon Valley), the world premiere of **The House of Yes** plus **Dottie and the Boys** and **Bully** (Magic Theatre), **Modigliani** and **Lady Day at the Emerson Bar and Grill** (Marin Theatre Company), and **Julius Caesar** and **King Lear** (Pacific Repertory Theatre). He was the resident lighting designer at the Western Stage for three seasons where some of his work includes **Chicago**, **Cabaret**, **The Good War**, **Little Shop of Horrors**, **Judevine**, **The Diviners**, and **Children of a Lesser God**.

Jonathan Williams **Scenic & Projections Designer**

Jonathan recently designed our set for **Dirty Rotten Scoundrels** and he served as the resident production designer for Capital Stage Company for over a decade. In 2006, Jonathan founded JSR Stage Designs, offering comprehensive production services to the Sacramento area arts and entertainment sectors. Additionally, Jonathan has freelanced extensively as a lighting and sound designer for various companies.

LEADERSHIP

Cathleen King **Executive Director**

Cathleen is the executive director of The Stage and where she has managed over 170 productions and twenty world premieres. She initiated and developed commissions, international partnerships, and co-productions including with Electric Company Theatre in Canada, Irish Theatre Institute in Ireland, El Teatro Campesino, African-American Shakespeare Company, Capital Stage, Ice Nine (The Grateful Dead), and Roshi Productions. Cathleen secured the acquisition of our property at 490 South First Street and is helping the planning and development of a new theatre facility and company home. She was a founding member of the Coalition of Bay Area Theaters, responsible for negotiating the establishment of a collective bargaining agreement with Actors' Equity Association for mid-size theatre companies in the Bay Area region. Cathleen produced the Downtown Arts Series in partnership with the City of San Jose, serving a diverse community of artists and emerging arts organizations for over ten years. She has served on the Theatre Service Committee for Theatre Bay Area, the SoFA Leadership Committee, and recently participated as a member of the Greater

Downtown San Jose Economic Recovery Task Force which leveraged additional funding for the arts in San Jose. In addition, she has served on grant panels for the City of San Jose and SVCreates, among others, and also served as an Arts Advisory Council member for the performance venue design process for Evergreen Valley College. Cathleen established a three-year educational outreach partnership with Notre Dame High School in San Jose and has adjudicated for many local high school and college theatre programs. She is the recipient of several distinguished awards including the 2018 Cornerstone of the Arts Award from the San José Arts Commission, as well as the 2018 Paine Knickerbocker Award for Continuing Contributions to Bay Area Theatre from the San Francisco Bay Area Theatre Critics Circle.

Randall King **Artistic Director**

Randall is the artistic director and co-founder of San Jose Stage Company. Under his leadership, The Stage has produced over two hundred plays and musicals and premiered over fifty new works, including twenty world premieres. Randall is the recipient of the 2018 City of San José Cornerstone of the Arts Award for providing enduring and effective leadership that contributes to the betterment of the San José arts community. Acting credits include Beverly Weston in **August: Osage County**, Big Daddy in **Cat on a Hot Tin Roof**, Willy Loman in the critically acclaimed **Death of a Salesman** (San Francisco Bay Area Theatre Critics Circle award, 2015), H. C. Curry in **The Rainmaker**, Frank Hamer and the Judge in **Bonnie & Clyde** (TBA Award finalist), EKO in **The Elaborate Entrance of Chad Deity**, Mark Rothko in **Red**, Jack Lawson in **Race** (2013 Standout Contemporary Production, Silicon Valley Awards), Dodge in **Buried Child** (2012 Standout Drama Production, Silicon Valley Small Venue

Theatre Awards), Johnny Friendly in **On the Waterfront**, Milan and the Waiter in **Rock 'n' Roll**, Sharky in **The Seafarer** (Top Ten in Theatre in 2009, Bay Area News Group), Ariel in **The Pillowman** (2010 Standout Dramatic Production Award by Wave magazine and Artsopolis-sponsored Silicon Valley Small Theatre Awards), and Richard Roma in **Glengarry Glen Ross**. Directing credits include a three-month extended run of **Picasso at the Lapin Agile** by Steve Martin, the world premiere of **Cumberland Blues**, the Grateful Dead musical featuring music and lyrics by Jerry Garcia and Robert Hunter that transferred to San Francisco, the Tuna trilogy (**Greater Tuna**, **A Tuna Christmas**, and **Red, White and Tuna**), **R.F.K.** (SFBATCC award), **Hand to God**, and most recently, the critically acclaimed production of **Chicago**. He has performed in leading roles at many theatres including San Jose Repertory Theatre, Berkeley Repertory Theatre, Sacramento Theatre Company, and the Alaska Theatre Festival. On screen, Randall has acted in **The Rainmaker** (directed by Francis Ford Coppola), **Mumford** (directed by Lawrence Kasdan), and **The Rock** (directed by Michael Bay). He has also performed in numerous television productions.

PRODUCTION AFFILIATIONS

Actors' Equity Association

Actors' Equity Association (AEA) was founded in 1913 and is the US labor union that represents more than 51,000 actors and stage managers. Equity seeks to foster the art of live theatre as an essential component of society and advances the careers of its members by negotiating wages, working conditions, and providing a wide range of benefits, including health and pension plans. Equity is a member of the AFLCIO and is affiliated with FIA, an international organization of performing arts unions.
www.actorsunion.org | [#EquityWorks](https://twitter.com/EquityWorks)

* Member of Actors' Equity Association, the Union of Professional Actors and Stage Managers.

° The director is a member of the Stage Directors and Choreographers Society, a national theatrical labor union.

SAN JOSE STAGE COMPANY

MISSION

Through powerful, provocative, and profound theatre, San Jose Stage Company (The Stage) seeks to expand community, forge creative partnerships, and challenge individuals in order to illuminate the human condition.

STAFF

Artistic Director.....	Randall King
Executive Director	Cathleen King
Associate Artistic Director	Allison F. Rich
Production Manager	Matt Casey
Technical Advisor	Robert Pickering
Master Electrician	Aaron Gin
PR Manager	Jonathan White
Digital Media	Caitlin Elizabeth Daniel Zapien
Development Consultant	Amy Winkleblack
Business & Operations Associate.....	Tor-Elias Johnson
Box Office & Patron Services Manager	Mac Williams
Patron Services Associate.....	Patrick Rivera
Photographer.....	Dave Lepori
Graphics	Caitlin Elizabeth Stephanie Whigham
Playbill Production	Third Act Services
Associate Artists	Ashley Garlick Kenneth Kelleher Johnny Moreno Giulio Cesare Perrone Steve Schoenbeck Will Springhorn Jr. Halsey Varady Maurice Vercoutere

BOARD OF DIRECTORS

President.....	Jason St. Claire
Vice President	James T. Beall
Secretary	Richard Keit
Legal Counsel	Richard T. Hilovsky
Members.....	Nicolle Burnham David Chamberlain Cathleen King Randall King Patricia McDonald Michael Van Every
Member Emeritus/Capital Campaign Chair	Jerry Strangis

SAN JOSE STAGE COMPANY

ABOUT THE STAGE

Now in its 42nd season, San Jose Stage Company is recognized as the South Bay's leading professional theatre company, having earned a reputation for artistic excellence through powerful, provocative, and profound work that illuminates the human condition. The Stage is devoted to new, cutting-edge work and reinterpreting American literature and world classics using innovative stagecraft, multi-media that propels the narrative, and accomplished, local actors in true repertory style. With the farthest seat in the house no more than fifteen feet from the three-quarter thrust stage, the connection between actor and audience is profoundly visceral. Attracting more than 30,000 patrons to downtown and employing more than 150 local artists annually, San Jose Stage Company continues to be a vital force in the region's economic and creative landscape. As a strong community partner, The Stage has been the creative home for more than 500 performance groups including San Jose Jazz and Notre Dame High School, working together to engage, provoke, and inspire current and future theatre participants and arts advocates. The Stage has produced over 200 productions, including twenty world premieres and fifty new works and is ranked as the second largest professional theatre and eighth largest performance arts organization in Silicon Valley by the *Silicon Valley/San Jose Business Journal*. www.thestage.org

LAND ACKNOWLEDGMENT

The Stage respectfully acknowledges the benefits and origins of its venue. We present our productions on land stolen from the Indigenous peoples in the region of the Ohlone Tribe. Over the years we have brought Indigenous shamans from the Ohlone Tribe into the space to bless the building and ask permission to continue the "oral tradition" of storytelling. We honor and recognize that the Ohlone people are a vital part of our community today. We are grateful to live, learn, and work on their ancestral lands, and continue the tradition of oral storytelling. The Stage is always seeking to deepen our connections with the Indigenous community. Please contact us with suggestions for ways we can continue to support Indigenous people.

BOX OFFICE INFORMATION

The box office is open one hour prior to curtain for will call and walk-up ticket purchases on performance days.

Subscribers may exchange their tickets up to one business day in advance of their scheduled performance. Exchanges are made on a seat availability basis and we cannot guarantee the same assigned seats.

Special discounts are available to students, seniors over sixty, and groups of ten or more.

You can also contact boxoffice@thestage.org for subscription questions, ticketing policies, or other information about The Stage.

408.283.7142
boxoffice@thestage.org
San Jose Stage Company
490 South 1st Street
San Jose, CA, 95113

PERFORMANCE SCHEDULE

Wednesday	7:00 PM
Thursday	7:00 PM
Friday	8:00 PM
Saturday	2:00 PM
Saturday	8:00 PM
Sunday	2:00 PM

TICKET PRICES

	CTR	LR SIDE	LR
Previews (Wed-Thu):	\$40	\$37	\$34
Previews (Friday):	\$43	\$40	\$37
Opening Gala (Sat):	\$74	\$69	\$64
Wednesday Evenings:	\$50	\$47	\$43
Thursday Evenings:	\$52	\$49	\$45
Friday Evenings:	\$56	\$52	\$47
Saturday Matinees:	\$56	\$52	\$47
Saturday Evenings:	\$62	\$58	\$54
Sunday Matinees:	\$56	\$52	\$47

Tickets subject to additional fees.

INSTITUTIONAL SUPPORT

San Jose Stage Company gratefully acknowledges our government, foundation, and corporate partners whose support allows The Stage to present bold, diverse, and innovative new work.

GOVERNMENT PARTNERS CIRCLE

The County of Santa Clara
City of San Jose Office of Cultural Affairs

FOUNDATIONS & VISIONARIES CIRCLE

The Applied Materials Foundation
Robert E. and Adele M. Boydston Charitable Foundation
Brandenburg Family Foundation
The David and Lucile Packard Foundation
The Richardson Family Foundation
The Shubert Foundation
SV Creates
Swenson Foundation

CORPORATE & LEADERSHIP CIRCLE

\$10,000+

Green Valley Corp / Swenson
Republic Urban Properties
Strangis Properties
Urban Catalyst

\$5,000+

Lincoln Properties
Morgan Stanley
MTM Building Group

\$2,500+

Bay101
Boccardo Management
Core Companies
McCarthy Ranch
Nvidia

\$1,500+

Cornerstone Earth Group
LPMD Architects
Republic Services, Inc.
San Jose Water Company
The Schoennauer Company

\$1,000+

HMH Engineers

\$500+

Adobe

INDIVIDUAL & BUSINESS SUPPORT

LEGACY CIRCLE | \$50,000+

Marilyn Taghon
Ronald & Ann Whyte

FOUNDER'S CIRCLE | \$25,000+

Robert J. Bettencourt

DIRECTOR'S CIRCLE | \$10,000+

Richard & Julie Hilovsky
James Kleinrath & Melody Singleton
Jason St. Claire
Jerry & Janet Strangis

ASSOCIATE'S CIRCLE | \$5,000+

Greg M. Bettencourt
Cheryl Booton & Robert Mannell
Peter & Barbara Dehlinger
Richard & Peggy James
Suzanne Wittrig & Alfonso Banuelos, MD

DESIGNER'S CIRCLE | \$2,500+

David Chamberlain
Mary Feldman & Richard Morris
Kyra & Hal Hubis
Howard Lyons
Judith Miller Siebenthal*

ACTOR'S CIRCLE | \$1,000+

Bradley Chibos & Pauline Moore
Sarah Clish, in memory of Nancy Clish
Patricia Curia
Mark Dickson
Donna Erickson
Kaye Evleth & Robert Burns
Aiko Fadness
Clayton & Sandra Feldman
Richard & Julie Hilovsky
Robert Leininger & Judy Rookstool
Cheri Lewis
Katherine Mason
Lyle Merithew & Eileen Sandra Swirsky
Dave & Elizabeth Monley
Arlene Okerlund
Daniel Pappone
Patrick Smith
Jeanne Torre*
KT & Mark Tucker
Nadejda & Mark Waite
Wanda Waldera

BENEFACTOR'S CIRCLE | \$500+

Gina & Brian Adams
Max Beckman-Harned*

Mike & Jan Bergkamp
Virginia Carpio
Dan Flynn
Rev. John & Marcia Freeseemann
Lucia Gilbert
Linda Ho & James Von De Bur
Gloria Hom
Marnie Kamzan & Steve Grant
Barbara Nilsen
Norvelle Ortega Benevento
Phyllis Perez-Sorensen
Erik & Judith Walberg
Lisa & Jeff Westerinen

PATRON'S CIRCLE | \$250+

Bob Ainsworth
Blanca Alvarado
Thomas Becker
Patricia Rubino Brunetti
Lloyd Darknell
David & Liyuza Eisbach
Flavia Geist & Donald Polensky
Mel Goertz
Richard Keit & Ru Weerakoon
Robert & Mary Kelly
Jan & Sofia Laskowski
Carolyn McInnes
Robert Pickering
Madalyn Radlauer
James Reilly
Stephanie Ronco
William Roth
Assaf Sagi
In memory of Norma Schlossman
Marilyn Sefchovich
Joan & Peter Sharrock
Rick Singleton
Jane Starbird
Michael Storm
Victoria Taketa
Dave & Michelle Tang
Stan Williams
Diana Wirt
La Donna Yumori-Kaku
Cecily & Fernando Zazueta

FRIEND'S CIRCLE | \$100+

Blanca Alvarado
Kent & Barbara Anderson
Cecil Anison
Valerie Ball
Marvin Bamburg
Erin Barclay
Kathryn Barclay

INDIVIDUAL & BUSINESS SUPPORT

Bob & Susan Biskeborn
Gail Boesch
Lizalou Bosman-Butler
Jane & Link Bradley
Bob Brownstein
James Champlin
Catherine Coe
Kathleen Cohen
Bart Connally
Paul & Connie Del Vigna
Patricia Diamond
Lynn Dobson
Dr. & Mrs. Richard Dorsay
Jerry Dyer
Susan Dyer
Marty Feldman
Michael Froncek
Marilynn Gilmore
Barbara Gottesman
Barbara Green
Barbara Groth
Eleanor Hansen
Darci Hill

Jim & Sheila Hill
Judy Hodkiewicz
Mary Idso
Teresa Jacobsen
Dennis Keane
Derick & Christel Kennedy
Harvey Kohs
Fran Laplante
Douglas & Mary Ann Le Blanc
Liz Lillard-Bernal
Roxanne Lim
Carole Mauss
The McBurney-Lin Family
David McClure
Wendy McGlothlin Wise
Jennifer Michael
Christine Miller
Michael Miller
Alan Moo & Barbara Park
Jan Pfiffner
Glenn Reed
James Reilly
The Richardson Family

Marvin Sabado
Cyril Scott
Pamela & John Scott
Jack Shannon
Joan Smith
Neville Spadafore
Jim Tellefson
Nicole Tung
Judith Turner
J.G. & Suzanne Van Stee
Alie Victorine
Christine Wait
Vanita Wells
Benjamin White
Betsy White
Mark Williams
Michael B. Wisper
Consuelo Yepiz

Reflects contributions received
through October 25, 2024.

* Indicates gifts that have been matched
1:1 or 2:1 by the donor's employer

LEGACY GIFTS

We express gratitude to the following individuals and organizations for their generous legacy gifts:

Jeffra & Michael Cook whose legacy gift will support actors and designers initiatives.

Jane & Ed Seaman | Marilyn Taghon | Ronald & Ann Whyte

For more information about Legacy Gifts please email development@thestage.org

FRONT OF HOUSE VOLUNTEERS

Missy Covella Blank
Lee Brunngraber
Susan Buchs
Willa Cao
Dan Coyle
Barbara Cross
Ebonye Davis
Claudia Druhan

Manju Gupta
Lynnea Haegen
Garry Johnson
Daniel Katzen
Linda Lappin
Ben Lee
Lena Loveridge
Polina Lozhnevskaya

Jessica Ly
Pam McLean
Pedja Miskin
Sarireh Nademi
Ralph Occipinti
Holly Pelking
Tina Pham
Lynn Repetsky

Susan Shalit
Melinda Sheehan
Brent Shiramizu
Mabel Shiramizu
Joni Smith
Gerald Smolovitz
Rebecca Smolovitz
Phyllis Sorenson

Carolyn Washington
Cindy Weintraub
Joyce Weissman
Diana Yuryeva
Chris Zegelin

INSTITUTIONAL SUPPORT

GOVERNMENT PARTNERS CIRCLE



FOUNDATIONS & VISIONARIES CIRCLE



Robert E. And Adele M. Boydston
Charitable Foundation



CORPORATE & LEADERSHIP CIRCLE



STRANGIS PROPERTIES



Morgan Stanley



BOCCARDO group, LLC
MANAGEMENT



LPMD ARCHITECTS



BENEFIT CONCERT



Jonathan Rhys Williams



Adrienne Herro

THE STAGE

FEATURING

NOVETEEN
jazz orchestra



Allison F. Rich



Will Springhorn Jr.

SOUNDS OF THE SEASON HOLIDAY BASH!

ONE NIGHT ONLY! TUESDAY, DEC. 17 • 7:30PM

CELEBRATE THE SEASON IN STYLE!

Join us for a One Night Only Benefit Concert filled with jazzy holiday hits featuring incredible vocal performances and an iconic big band flair. A truly joyous evening and the perfect holiday celebration!

All proceeds to benefit San Jose Stage Company and Caroline Davis Intermediate School.

TOGETHER, WE CAN THRIVE...

Help us keep the spirit of The Stage alive and thriving for years to come.
DONATE TODAY AND HELP US THRIVE IN 24/25!
VISIT WWW.THESTAGE.ORG TO DONATE!

HELP US THRIVE

24

4

THE STAGE

SEASON 42

25



*Spend \$150
Get a \$50 gift card*

Make this season unforgettable as you shop, dine and explore in Downtown San Jose from Nov. 20–Dec. 24. Scan the QR code or visit sjdowntown.com/shopdtsj for details.



PARKSJ

90 minutes of free parking
in 5 ParkSJ City garages

Visit ParkSJ.org