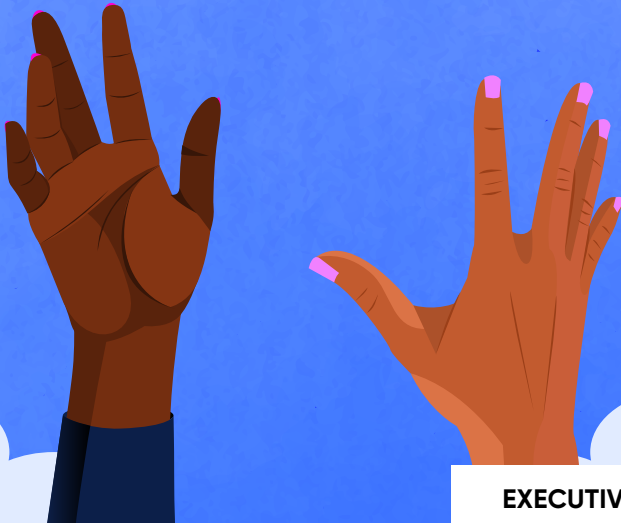


FLEX



BY CANDRICE JONES
DIRECTED BY MARGO HALL



SAN FRANCISCO
PLAYHOUSE

EXECUTIVE PRODUCERS
LINDA BREWER
CLAY FOUNDATION - WEST
BETTY HOENER
JENN & DAVE STRINGER

BOARD OF DIRECTORS

President William Adler
Nancy K Austin
Bobak Bakhtiari
Linda Brewer
Andre Glenn Chenoweth
Susi Damilano
Bill English
Margot Golding
Elizabeth Groenewegen
Robert Hulteng
Leslie Karren
Jacqueline Kubicka
Jennifer Lindsay
Samuel Muir
Betty Nakamoto
Howard Oringer
Louis Parnell
Jeffrey Pfeffer
Susannah Raub
Phyllis Rosenberg
Frances Schendle
Dana Shapiro
Margaret Sheehan
Michael Torres

Fred L. Karren
Janet McAllister
In Memoriam

LAND ACKNOWLEDGMENT

We acknowledge that the land on which we gather belongs to the Ohlone people of past, present, and future, whose homelands extend from Big Sur to the San Francisco Bay Area. We recognize that every member of the Bay Area community has, and continues to benefit from, the use and occupation of this land. We recognize that the Ohlone people are alive and flourishing members of the Bay Area communities today. We are grateful for the opportunity to live, work, and learn on their land. Visit sfplayhouse.org/edi for more information.

SAN FRANCISCO PLAYHOUSE

450 Post Street, San Francisco, CA 94102
415-677-9596 • sfplayhouse.org
info@sfplayhouse.org

PRODUCTION SPONSORS

PRODUCERS

Executive Producers

Linda Brewer
Clay Foundation - West
Betty Hoener
Jenn & Dave Stringer

Producers

Elizabeth Groenewegen
Nick & Sandy Javaras
Michael Levy & Michael Golden
Craig Moody
Howard & Jan Oringer
Harry & Kay Rabin
Arne & Gail Wagner
Ronald Whittier Family Foundation

Associate Producers

Robert Beadle
Steven & Karin Chase
Bruce Colman
Rich Gill & Emma Stewart
Keith Goldstein & Donna Warrington
Nancy Larson
Chris Mancini & Brian Sauls
Samuel & Sharon Muir

ARTISTIC UNDERWRITERS

Director

Tim & Lyn Potter

Scenic Designer

Kevin Gahagan

Lighting Designer

Krystyna Finlayson

Costume Designer

Dexter & Kathie Lowry

Basketball Consultant

Guy Joslin

WELCOME



In *Flex*, playwright Candrice Jones gives us a story that pulses with the rhythm of gym shoes on maple and the heartbeat of young women yearning to define themselves. Set in rural Arkansas, the play follows a high school girls basketball team chasing the state championship. As with any great underdog story, the true contest is not just on the court.

For these players, basketball is more than a sport. It is identity, discipline, and hope. The court becomes a proving ground where ambition collides with loyalty, where each young woman wrestles with the expectations placed upon her by family, community, and society. As they practice drills and run plays, the players also confront huge personal challenges. There are questions of gender and sexuality, pregnancy, competition, and the terrifying journey into adulthood.

Jones writes with a fierce authenticity about the interior lives of these young athletes. Their language is sharp and funny, their struggles raw and deeply human. What emerges is not a predictable sports narrative but a portrait of resilience, a story of young women discovering their potential to face uncertainty. *Flex* reminds us that the road to victory twists through moments of doubt, heartbreak and courage.

Flex also celebrates the exhilaration of teamwork. On the court, the players move with a collective rhythm. They pass, pivot, defend and learn to trust. That spirit of collaboration mirrors the deeper bond that grows among them. As personal struggles threaten to pull them apart, the team defines a safe space where they can show up as their fullest selves.

At its core, *Flex* is about the power of possibility. When circumstances and stereotypes conspire to set limits upon them, when they are told their dreams are too big, *Flex* dares to imagine what can happen when they refuse to accept those limits. In the drive toward the state championship, we witness not just a quest for a trophy, but a discovery of self-worth.

Like the best sports stories, *Flex* lifts the spirit because it reveals something universal: the courage it takes to keep playing, even when the odds are stacked against you. In that persistence, in every pass, sprint and leap to the basket, we see the thrilling promise of young people claiming their future.

Bill English
Artistic Director

OUR MISSION

Our mission is to share stories that uplift spirits, deepen self-awareness, and nurture compassionate community. Our theater is an Empathy Gym where we come to practice our powers of compassion. Here, safe in the dark, we can risk sharing in the lives of the characters. We feel what they feel, fear what they fear, and love what they love, and as we walk through our doors we take with us greater powers of understanding to make our community a better place, one play at a time.

SAN FRANCISCO PLAYHOUSE
BILL ENGLISH, Artistic Director, **SUSI DAMILANO**, Producing Director, and
LINDA BREWER, CLAY FOUNDATION - WEST, BETTY HOENER,
and **JENN & DAVE STRINGER**, Executive Producers,
present

FLEX

By **CANDRICE JONES**

Directed by **MARGO HALL**

Scenic Designer
BILL ENGLISH

Costume Designer
JASMINE MILAN WILLIAMS

Lighting Designer
RAY OPPENHEIMER

Sound Designer
RAY ARCHIE

Properties Designer
AMY BENJAMIN

Wig & Hair Designer
ALEXANDER CLASS

Assistant Director & Dramaturg
DEVIN A. CUNNINGHAM

CAST

Starra Jones.....**SANTEON BROWN***
April Jenkins.....**CAMILLE COLLAÇO**
Cherise Howard.....**EMMA GARDNER**
Coach Francine Pace.....**HALILI KNOX***
Sidney Brown.....**PAIGE MAYES***
Donna Cunningham.....**COURTNEY GABRIELLE WILLIAMS***
Fight Captain.....**PAIGE MAYES***

UNDERSTUDIES

Donna Cunningham, April Jenkins.....**SUNDIATA AYINDE**
Coach Francine Pace.....**CHAMPAGNE HUGHES**
Cherise Howard.....**NYLAROSE MOORE**
Starra Jones, Sidney Brown.....**BRITTANY NICOLE SIMS**

*Understudies never substitute for the listed performers unless
a specific announcement is made at the time of the performance.*

SETTING: Multiple locations in Southeast Arkansas and Plainnole, Arkansas.
Late February to mid-March, 1998.

ADDITIONAL CREATIVE TEAM

Casting Director.....**KARINA FOX**
Associate Scenic Designer.....**KIKI HOOD**
Dialect Coach.....**GERI-NIKOLE LOVE**
Intimacy Director.....**JEUNÉE SIMON**
Fight Director.....**DAVE MAIER**
Basketball Consultant.....**EMMANUEL BLACKWELL**

STAGE MANAGEMENT

Stage Manager.....**SARAH MARIE SELIG***
Assistant Stage Manager.....**KAYA LEHR-LOVE**
Deck Crew & Dresser.....**ARIEL TYREE**

PRODUCTION STAFF

Director of Production.....**ANGELA KNUTSON**
Production Coordinator.....**SARAH MARIE SELIG**
Production Associate.....**JOEL MOORE**

BIOGRAPHIES



**SUNDIATA
AYINDE**



**SANTEON
BROWN**



**CAMILLE
COLLAÇO**



**EMMA
GARDNER**



**CHAMPAGNE
HUGHES**



**HALILI
KNOX**



**PAIGE
MAYES***



**NYLAROSE
MOORE**



**BRITTANY NICOLE
SIMS**



**COURTNEY GABRIELLE
WILLIAMS***

CAST

SUNDIATA AYINDE

U/S: April Jenkins

U/S: Donna Cunningham

Sundiata (she, her), is an Oakland-raised performer passionate about universal access to the arts. She spent two years as an assistant dramaturg working under Philippa Kelly on projects including *As You Like It*, as adapted by Shaina Taub, at San Francisco Playhouse. Her latest work includes *The Watermelon Cabaret* (directed by Mylo Cardona at Magic Theatre) and *The Cake* (directed by Lisa Mallette at City Lights Theater Company).

SANTEON BROWN*

Starra Jones

Santeon is an actor born and raised in Los Angeles and is making her theatre debut. Her professional career began with the booking of a national Sonic commercial at age ten. Santeon earned a BA in communication studies and an MA in family psychology from Pepperdine University. After completing her education, she fully pivoted to the arts. Her most recent credit is the feature film *By the Grape of God* which was screened at Dances with Films in New York. Her credits also include the short film *12 Hours* which was featured at the Hollyshorts Film Festival and recently accepted into the Pasadena Film Festival. Television credits include *Idiotsitter* (Comedy Central). "Love

to mom, Tucker, Xyloh and my community for supporting me along the way."

@santeonajourney

CAMILLE COLLAÇO

April Jenkins

Camille, a multi-hyphenate artist from San Francisco, is thrilled to be making her San Francisco Playhouse debut. Past stage credits include Simone Mabry in *Chicken and Biscuits*, Little Inez in *Hairspray*, and the ensemble of *I, Too, Sing America*. Recent staged readings include *Driving the Girls* (Playwrights Foundation), *True Beauties* (Magic Theatre), *SistahFriend* (3Girls Theatre), and *Every Saturday Night* (SFBATCO). Camille trained at the American Conservatory Theater (A.C.T.) via the Summer Training Congress and Studio A.C.T. programs. She earned a BA in creative writing from the University of Washington, where she also studied playwriting. You can find her at various writers' open mics throughout the city. Her ultimate goal is to spread love, compassion, and connection through art. She is deeply grateful to the entire company of FLEX and the Playhouse, and to her parents, fiancé, family, and friends for their endless support. **@camillecollaco**

EMMA GARDNER

Cherise Howard

Emma is so excited to be making her San Francisco Playhouse debut! Her recent credits include the title role in *Cinderella*

(African-American Shakespeare Company), understudying Helen and Suzanne for *The Hello Girls* (Ross Valley Players), and staged readings of *Blackbox* (Word for Word Performing Arts Company) and *Love U* (Grabmeier and Jost). She earned a BA from the University of California, Berkeley, in molecular and cell biology and psychology while also being involved in the Theatre, Dance, and Performance Studies (TDPs) department. Other favorite credits include *Pool of Unknown Wonders: Undertow of the Soul*, *In the Red and Brown Water*, *Daughters of Leda*, and *The Wednesday Club*. She thanks her amazing friends for supporting her through thick and thin and her incredible family for always being her number one fans! @emmagardner3

CHAMPAGNE HUGHES

U/S: Coach Francine Pace

Champagne (she, her) is a performer, producer, and drama therapist. She earned a MA in counseling psychology from California Institute of Integral Studies (CIIS) and was the inaugural mentee in New Black Voices Mentorship Program at the Lorraine Hansberry Theatre, where her solo show, *No More Adjustments*, premiered. Her stage work includes *Les Blancs* (Oakland Theater Project), *The Human Ounce* (Central Works), *Othello* and *Macbeth* (African-American Shakespeare Company), and *Clybourne Park* (Altarena Theater). She is the creator of *After the Applause*, a podcast about what performers carry in, carry through, and carry home. champagnehughes.com

HALILI KNOX*

Coach Francine Pace

Halili is delighted to return to San Francisco Playhouse, where she last performed in *Barbecue* (San Francisco Bay Area Theatre Critics Circle award for Ensemble). She serves as associate artist and board member at Oakland Theater Project, where she performed in *A Thousand Ships* (SFBATCC nomination for Principal Performance - Drama), *The Crucible*, *Dance of the Holy Ghosts*, and *The Gospel of Lovingkindness*. Other recent credits include the Off-Broadway premiere of *Flex* at Lincoln Center Theater, as well as its world premiere at TheatreSquared, and 44th Humana Festival of New American Plays at Actors Theatre of Louisville. Halili is an Emmy-nominated television host who made her national

debut on *Double Take* (HGTV). In addition to stage and screen work, Halili has performed internationally as a jazz and blues vocalist. She is a proud East Palo Alto native, Howard University graduate, and Actors' Equity Association member. @iamhalili

PAIGE MAYES*

Sidney Brown

Paige is a passionate performer from Aurora, the heart of Colorado. She is overjoyed to make her debut at San Francisco Playhouse. Paige works regionally as a performer, choreographer, heels instructor, and yoga teacher. Recent credits include *Black Ball: The Negro Leagues and the Blues* (Presidio Theatre), *The Black Feminist Guide to the Human Body* (Lorraine Hansberry Theatre), *A Christmas Carol* (American Conservatory Theater), *Toni Stone* (Milwaukee Repertory Theater/Alliance Theatre), and *The Mojo and the Sayso* and *The Crucible* (Oakland Theater Project). Paige sends endless love and gratitude to her family for their unwavering support. @iam_paigemayes

NYLAROSE MOORE

U/S: Cherise Howard

Nylarose (she, her) is a San Francisco-born Philadelphia- and San Francisco-based actor, singer, and knitter. Past credits include Angel in *Marisol* directed by Cat Ramirez, Claudius in *Hamlet* directed by Jamison Foreman, Usher and God in *Everybody* directed by Allen Radway, and Cinna and Citizen in *Julius Caesar* directed by Tai Verley. She has been seeing shows at San Francisco Playhouse since she was a kid and is thrilled to be a part of the *Flex* team! "All the love to my family and friends!" @_nylarose_

BRITTANY NICOLE SIMS

U/S: Starra Jones

U/S: Sidney Brown

Brittany is thrilled to return to San Francisco Playhouse, where she played DeDe Okafor in *Nollywood Dreams*. A Bay Area native, she earned her BA in theatre arts from California State University, Sacramento. She won the Shellie Award for Outstanding Supporting Actress in a Play in 2020 for her role as Mary in *ReproRights*. She recently played Beverly Jenkins in *Chicken & Biscuits* at African-American Shakespeare Company (AASC). Some of her favorite roles include: The Woman/Abioseh in *Les Blancs* (Oakland Theatre Project), Paulina in *The Winter's Tale*

and Lady in Green in *Four Colored Girls* (AASC), Averie in the regional premiere of *Dot* (New Conservatory Theatre Center), and Wanda in *Crowns* (Contra Costa Civic Theatre). Brittany thanks her mom, fiancé, and family for their love and support. She dedicates this performance to her sister Tiffany, who is "a true baller, scholar and now a doctor!"

COURTNEY GABRIELLE WILLIAMS*

Donna Cunningham

Courtney is an actress, voice artist, and arts educator from Oakland. A graduate of Fordham University with a BA in theatre, Courtney further honed her craft as an alumna of the conservatory program at Steppenwolf Theatre Company. She also trained at the London Dramatic Academy. Courtney is best known for her role as Young Cookie on *Empire* (FOX) and has performed in a variety of television and film projects including *Blindspotting* (STARZ), *Soundtrack* (Netflix), *Chicago Med* (NBC), and the acclaimed short film *Civic* which was noted in *The New York Times* as one of the best films of 2023 and can be watched on the Criterion Channel. She last performed in *Sunset Baby* directed by Margo Hall at Lorraine Hansberry Theatre. Other theatre credits include work with PS 122, Clubbed Thumb, Shotgun Players, Aurora Theatre Company, The Flea, Brick, The Kitchen, Dixon Place, and The Lark. @letcourtneytellit

CREATIVE TEAM

CANDRICE JONES

Playwright

A recipient of the 2020 Steinberg Playwright Award, Candrice is from Dermott, Arkansas. Her mission is to write love letters for women of the American South. A playwriting alum of Voices of Our Nations Arts Foundation (VONA) and an MFA recipient from the School of Critical Studies at the California Institute of the Arts (Cal/Arts), she has been a Playwrights' Center and MacDowell fellow. Her play *Flex* was developed at VONA, The Ground Floor at Berkeley Rep, and the Bay Area Playwrights Festival, and then received a co-world premiere at TheatreSquared and Theatrical Outfit. It has since been produced at Penumbra Theatre in St. Paul and Lincoln Center Theater. Candrice has received virtual commissions from People's Light and Actors Theatre of Louisville. Her play *A Medusa Thread* (The Kilroys' List -

2023) was developed in the Launchpad Series at the University of California, Santa Barbara. Candrice currently lives in New York where she is working on commissions.

MARGO HALL

Director

Margo is an award-winning actor, director, playwright, educator, and the artistic director of Lorraine Hansberry Theatre (LHT). She was awarded the 2021 Kenneth Rainin Fellowship in Theater and listed as one of the "YBCA 100" honorees in 2020. She recently directed *Fat Ham* and *Nollywood Dreams* here and *Garuda's Wing* for Campo Santo, where she is a founding member. LHT directing credits include *[Hieroglyph]*, *In the Evening by the Moonlight*, *The Black Feminist Guide to the Human Body*, *Thurgood*, *Rejoice!*, and *How I Learned What I Learned*. Additional directing credits include *Barbecue*, and *Red Velvet* (San Francisco Playhouse), *Sonny's Blues*, (Word for Word Performing Arts Company), *In the Red and Brown Water* and *Polaroid Stories* (University of California, Berkeley), and *Once on this Island*, *Hamlet*, *Blood in the Brain*, *Spunk*, *The Trojan Women*, *It Falls*, *Ragtime*, and *A Streetcar Named Desire* (Chabot College). An accomplished and award-winning actor, Margo has graced the stages of Campo Santo, Magic Theatre, Marin Theatre Company, California Shakespeare Theater, and American Conservatory Theater. Screen credits include *Bottled Spirits*, *All Day and a Night*, *Blindspotting*, and the voice of Melba in *Soul* (Pixar).

RAY ARCHIE

Sound Designer

Ray is the principal sound alchemist of Brooklyn Sound Lab and founder of Notes to the Soul. He combines rare musical virtuosity with pioneering technical innovation in audio production. As an accomplished multi-instrumentalist who has performed internationally with Leonard Bernstein and leading orchestras, his mastery spans classical, jazz, rock, and hip-hop, and decades of studio expertise. His unique blend of performance experience and technological prowess including his role in building one of the world's largest streaming networks at CBS Radio makes him an unparalleled creative partner who delivers both artistic excellence and technical precision to every project.

AMY BENJAMIN

Properties Designer

Amy draws from an extensive background in multidisciplinary art to create theatre magic. She earned a BA in design studies from San Jose State University and has been mentored in scenic design by Nina Ball. She most recently served as properties artisan here for *M. Butterfly*, *Into the Woods*, *Noises Off*, and *My Fair Lady*. She also creates props for Word for Word Performing Arts, Z Space, and Marin Shakespeare Company. In her free time, she is passionate about building inclusive arts communities where people are given space to explore creativity, network and have fun.

ALEXANDER CLASS

Wig Designer

Alexander is thrilled to continue their journey at San Francisco Playhouse. As a multidisciplinary Latinx artist hailing from the vibrant landscapes of Puerto Rico, Alexander is deeply committed to the art of storytelling, believing in the profound ability of hair and makeup to transform characters and narratives on stage. They extend heartfelt gratitude to their beloved Abuela, family, and friends for their steadfast encouragement and love throughout this creative journey. Selected credits in the Bay Area include *M. Butterfly*, *The Aves*, *Uncle Vanya*, *Hamilton* (Phillip Tour), *The Lehman Trilogy*, *A Strange Loop*, and *Hippest Trip: The Soul Train Musical*.

DEVIN A. CUNNINGHAM

Assistant Director & Dramaturg

Devin is a multi-hyphenate storyteller from Oakland. Acting credits include *Fat Ham* (San Francisco Playhouse), *A Whynot Christmas Carol* (American Conservatory Theater), *wearecontinuous* (New Conservatory Theatre Center), *Is God Is* (Oakland Theater Project), *A Midsummer Night's Dream* and *Passing Strange* (Shotgun Players), and *The Toilet* by Amari Baraka. He currently serves as the co-associate artistic director at the African-American Shakespeare Company where he directed *Cinderella* and *From One to Another: Homage to the Legacy of Maya Angelou*. Jordan studied at PCPA Pacific Conservatory Theatre. He thanks his family, 4810, for their continued love and support, and his artistic family at YHT for pushing excellence in craft. "I.E.G."

BILL ENGLISH

Scenic Designer

A co-founder and the artistic director of San Francisco Playhouse, Bill has served as director, actor, scenic designer, and sound designer - or various combinations thereof - winning San Francisco Bay Area Theatre Critics Circle nominations or awards in each of those categories.

KAYA LEHR-LOVE

Assistant Stage Manager

Kaya (he, they) is thrilled to return to the stage side of San Francisco Playhouse where he has worked on the teams for *Exotic Deadly: Or, The MSG Play* and *The Play That Goes Wrong*. He first fell in love with theatre after seeing *Ideation* as part of the Rising Stars program in 2016. Since then, he's worked on other productions in the Bay Area including *Witch Hunt* and *House of Desires* (Those Women Productions), and produced and directed his own production of *Ideation* in 2018. Kaya is grateful for all the opportunities that San Francisco Playhouse has opened up for him, and for his mother and partner who both helped him get to where he is today!

RAY OPPENHEIMER

Lighting Designer

Ray (he, him) is making his San Francisco Playhouse debut. He is a Bay Area-based lighting designer, digital artist, educator, and creator who has been bringing his boundless curiosity, chimerical aesthetic, and Sisyphean perseverance to live design and education since 2005. His design work has also been featured locally at Berkeley Repertory Theatre, The Strand Theater (American Conservatory Theater), Marin Theatre Company, Aurora Theatre Company, Shotgun Players, Word for Word Performing Arts Company, The Magic Theatre, and Crowded Fire Theater. Ray earned his MFA for lighting design from San Francisco State University in 2017. He currently teaches lighting and media design for live performance as a lecturer in the Theatre, Dance, and Performance Studies department at the University of California, Berkeley.

SARAH MARIE SELIG*

Stage Manager

Sarah (she, her) has happily called San Francisco Playhouse her theatrical home for the past seventeen years as part of their stage management and production

team. Her recent Playhouse credits include *The Curious Incident of the Dog in the Night-Time*, *Waitress*, *As You Like It*, *Clue*, *Nollywood Dreams*, *The 39 Steps*, and *The Glass Menagerie*. When she isn't working at the theater, she spends her days raising her little chaos demon Nico, and doing crazy CrossFit workouts with her husband Vinny.

JASMINE MILAN WILLIAMS

Costume Designer

Jasmine (she, her) is blessed to have styled characters in *The Black Feminist Guide to the Human Body* (Lorraine Hansberry Theatre), *Choir Boy* (Shotgun Players), the Oregon Shakespeare Festival, the film *Bottled Spirits*, and *In the Red and Brown Water* (University of California, Berkeley). Jasmine is excited to be back at San Francisco Playhouse for *Flex* because, as a local actor and costume designer, being part of creating art in the Bay Area is so important to her. "Gratitude." jasminemilan.com

FOUNDERS

SUSI DAMILANO

Founder & Producing Director

Susi (she, her) is co-founder and producing director of San Francisco Playhouse, with over two decades of professional collaboration with Bill English. She is a six-time recipient of the Excellence in Theatre Award for Principal Actress in a Play from the San Francisco Bay Area Theatre Critics Circle and she has directed over a dozen award-winning Playhouse productions. When absolutely necessary, Susi will admit to being a CPA, and in another life she played the role of "VP of Human Resources." For real.

BILL ENGLISH

Founder & Artistic Director

Bill is the co-founder and artistic director of the San Francisco Playhouse. In twenty-three years, he - with Susi Damilano - has guided its growth from a bare-bones storefront to the second-largest nonprofit theatre company in San Francisco. Milestone accomplishments include bringing Pulitzer Prize-winner Stephen Adly Guirgis to the Bay Area by directing three of his plays, commissioning multiple playwrights including Theresa Rebeck, Aaron Loeb, Lauren Gunderson, Lauren Yee, and Christopher Chen, and developing world premieres from workshops to Sandbox Series to mainstage to Off-Broadway (including the Off-Broadway transfers of *Ideation* and *Bauer*), and presenting the very first production of *Grounded* by George Brant which later played at the Public Theater. He coined the phrase "the empathy gym" and it drives everything at the Playhouse.

PRODUCTION AFFILIATIONS

ACTORS' EQUITY ASSOCIATION

Founded in 1913, Actors' Equity Association is the US labor union that represents more than 50,000 actors and stage managers. Equity seeks to foster the art of live theatre as an essential component of society and advances the careers of its members by negotiating wages and working conditions and providing a wide range of benefits, including health and pension plans. Actors' Equity is a member of the AFL-CIO and is affiliated with FIA, an international organization of performing arts unions. actorsequity.org

Biography content is provided by the artists profiled.
Opinions expressed therein do not necessarily reflect the views of San Francisco Playhouse.

* Member of Actors' Equity Association, the Union of Professional Actors and Stage Managers.

RISING STARS

Rising Stars are the future movers and shakers of the American theatre. They are high school students who are also actors, directors, writers, and designers. They are dreamers and doers, and their journey is made possible by heroes like you. For only \$150 you can sponsor four tickets for local Rising Star students to see four plays at San Francisco Playhouse. Visit us online today and join the heroes below!

Anonymous (5)
Wendy Allphin
Cynn timer Anderson &
Jerry Rampelberg
Claire Axelrad &
Mark Pahlavan
Eve Barringer
Suzanne Beim
Elizabeth Borst
Nina Buthee
Victoria Chen
Rajeev Chopra
Lily L. Chow
Darryl & Carolyn
Compton
Mike Crosby &
Dr. Marsha Brown
Edward Cullen
Sheila Dalton
Mark Evanoff
Paul Feasby
Lynn Fonfa &
Margarie Cohen

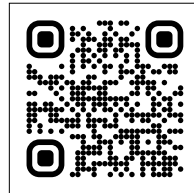
Gary & Paula Fracchia
Diana Gay-Catania &
David Catania
Kathleen Gee
Keith Goldstein &
Donna Warrington
Maria Hilakos Hanke
Marianne Hesse
Richard & Terry Horrigan
Nancy Howe
Daniel & Debra Hunter
Dov & Madelyn Isaacs
Gary Jaffe
Rosemary Jenckes
Herman & Gloria Jew
Guy Joslin
Robert & Kathleen Kaiser
John A. Kelley
Veronica & Rodney Kiefer
Nelda Kilguss
Duff, Carol &
Mikayla Kurland

Kenneth C. Larson &
Linda Adams
Nancy Lenvin
Nancy Lewis
Tom & Stephanie Lima
David May &
Susan Carluen May
Jackie & Richard Mayer
Michael McKeon
Denise Michael &
David Schirle
Henry Milich
Miriam & Michael Morgan
Kenneth Noyes &
Alan Pardini
Thomas Owen
Lynne Painter
Kiran Pandit
Rosemary Pfeiffer
Dan & Dee Dee Pisano
Susan D. Ralston
Jeff Rodman &
Adrienne Hirt

Bill & Julie Ryan
Linda Scaparotti
James Seff &
Margene Fudenna
Tanya Slesnick &
Ted Mitchell
Barbara Sprung
Kate & Richard Stacy
Gilda Sullivan
Karen Sullivan &
Ken Mitchell
Diana Taylor
Gretchen Trabant
Jim Turner
Katharine & David
Velleman
Mary Wais
John Wildermuth
Edward Winslow
Michael Zarrella &
Linda Ruggeri

SKIP THE LINE AND SAVE SOME TIME!

You can now pre-order drinks and snacks from our concessions bar.



Scan the QR code above to place your order for intermission or after the show, and your concessions will be waiting for you in the lobby.

SAN FRANCISCO PLAYHOUSE

San Francisco Playhouse, the City's "Empathy Gym" as described by Artistic Director and Co-Founder Bill English, is celebrating over 150 productions of award-winning theatre. Every season for 22 years, it has offered a selection of original works mixed with reimagined classic plays and musicals, "making the edgy accessible and the accessible edgy." Commissions and world premières are a regular feature at the Playhouse and include works by esteemed playwrights George Brant, Christopher Chen, Ruben Grijalva, Lauren Gunderson, Claude Jackson Jr., Theresa Rebeck, Michael Gene Sullivan, Steve Yockey, and Aaron Loeb, resident playwright. Three of these transferred directly to New York productions. Gunderson's *Bauer* and Loeb's *Ideation* opened Off-Broadway at 59E59 Theaters, and Loeb's *Abraham Lincoln's Big, Gay Dance Party* won the best of New York International Fringe Festival. This steadfast focus on new works has been honored by grants from the National Endowment for the Arts and the American Theatre Wing, and Playhouse commissions have garnered regional acclaim. Grijalva's *Shoot Me When*, presented online during the pandemic, won the Will Glickman Award and Rebeck's *Seared* opened the 2016–2017 season and was nominated for ten San Francisco Bay Area Theatre Critics Circle awards. Works developed by the Playhouse have also gone on to national recognition. Chen's *You Mean to Do Me Harm* won the Lanford Wilson Award from the Dramatists Guild of America in 2016. Yockey's *Pluto*, a Playhouse commission, was named a National New Play Network Rolling World Premiere. Brant's *Grounded*, a Playhouse premiere, was produced at the Public Theater starring Anne Hathaway and directed by Julie Taymor in 2015 and has been adapted by Tony-winner Jeanine Tesori for the Metropolitan Opera this season. Rebeck's *Seared* was produced Off-Broadway at MCC Theater starring Tony-nominee Raúl Esparza in 2019. The Playhouse has also supported emerging voices in its experimental Sandbox Series, running from 2009 to 2020, and including original works and world premieres by Steven Dietz, Dipika Guha, Chelsea Marcantel, Rogelio Martinez, Walt McGough, Carey Perloff, Geetha Reddy, Lynn Rosen, and Lauren Yee. sfplayhouse.org

your resource for the right content to **tell your story**

- GRAPHIC DESIGN
- ADVERTISING & PROMOTION
- LOGOS & BRANDING
- CUSTOM PUBLISHING
- DIGITAL MARKETING
- CONTENT DEVELOPMENT
- CREATIVE CONSULTING

delivering solutions to the arts and hospitality communities **for over two decades**

THIRD ACT SERVICES

www.thirdact.services • 415.377.9323

OPERATIONS

Founder & Producing Director..... SUSI DAMILANO
Founder & Artistic Director..... BILL ENGLISH

ARTISTIC

Lead Producer, Musical Theatre ROBERT HULTENG
Associate Artistic Director MARIE-CLAIRE ERDYNAST
Resident Playwright AARON LOEB

DEVELOPMENT

Director of Development GABRIEL TANGUAY ORTEGA
Development Manager..... MADELINE DeNOFIO
Development Associate & Event Coordinator NICOLE HESLIP

MARKETING

Director of Marketing & Communications DONNY GILLILAND
Content Marketing Manager JUAN REBUFFO
Photographer JESSICA PALOPOLI
Videographer ADAM ELDER MONTANARO
Key Art Designer LENA SEMENKOVA
Playbill Editor ROBERT SOKOL
Publicists CARLA BEFERA
LAUREN GOLDFARB

PATRON SERVICES

Patron Services Manager KYZIAH SHAVERS
Assistant Box Office Manager DANIEL PEREZ
Box Office Associates KAYA LEHR-LOVE
REBECCA SALSBURG-FRANK
CARO SANTIAGO
Front of House Lead..... GRACE ROBINSON
Front of House Associates..... DARIA AMIT, MATTHEW DALY,
DANI GLENN, MARCOS JAMES,
KAYA LEHR-LOVE, JIM McCUNN,
KATIA SOULLIERE-VOGT, BENNETT VERNICK
Food & Beverage Coordinator..... STEPHEN VAUGHT
Concessions Lead..... RODRICK BROWN
Concessions Associates..... MARK CRETIN, MATTHEW DALY, JULIE KVALEN,
KAYA LEHR-LOVE, CASEY NORMAN,
Audience Development Manager..... QUENSELLA MILLER
Usher Program Manager BENNETT VERNICK

ADMINISTRATION

General Manager..... MORGAN REISINGER
General Counsel..... ROBERT HULTENG
Administrative Manager CHARLOTTE McDONALD
Company & Casting Manager ADRIA SWAN
Accountant MARK THOMPSON
Bookkeeper..... ANN FEEHAN
Accounting Intern..... JUSTIN HAMMER
Empathy Gym Dogs..... EMI
LIBRA

All images and/or content provided by San Francisco Playhouse staff, contractors, and/or creative artists unless otherwise credited. Opinions expressed by contractors, contributors, and/or creative artists do not necessarily reflect the views of San Francisco Playhouse. Photo credits are included as provided.

Playbill published by THIRD ACT SERVICES • thirdact.services • 415.377.9323

DEDICATED DONATIONS

We respectfully recognize the following individuals in whose honor or memory a supporter of San Francisco Playhouse has made a dedicated donation.

In loving memory of DICK BOJACK • *Audrey Bojack*

In memory of PAUL DATTILIO • *Stephen Smith*

In memory of LES FINKELSTEIN • *Michael Raddie & Gayle Tunnell*

In honor of CINDY GOLDFIELD • *Kathleen McNulty*

In honor of BILL GREGORY • *James Warren*

In loving memory of AL HOFFMAN • *David Shepherd*

In memory of FRED KARREN • *Mike & Judy Gallagher*

In loving memory of FRED & BETH KARREN • *Leslie Karren*

In memory of JANE KELLER • *Richard Keller*

In memory of PAT KLANSKO • *Anonymous*

In memory of JANET McALLISTER • *William McAllister*

In honor of LOUIS PARNELL • *Alisa Baker*

In honor of HILDY & JEFFREY PFEFFER • *Cristina Banks*

In honor of JEFF & HILDY'S Wedding Celebration • *Diane & Steve Ciesinski*

In honor of JEFFREY PFEFFER • *Bruce Cozadd*

In honor of JEFFREY PFEFFER & HILDY SHANDELL • *Nicole & Amir Dan Rubin*

In honor of SUSANNAH RAUB • *Dr. Russell & Morgan Cosby Howson*

In loving memory of EMILE REYES • *Alan Mattacola*

In memory of CLAYTON ROST • *Joan Rost*

In honor of MARGARET SHEEHAN & BRUCE COLMAN • *John & Linda Elman*

In honor of KAREN SULLIVAN & KEN MITCHELL • *Gilda Sullivan*

In memory of TOM TALLMAN • *Richard L. Wellins*

In memory of FREDA & IRVING TEITELBAUM • *Marcia Ruben*

In memory of R. JEFFREY WELLS • *Mary Wais*

In honor of my brother, KIM • *Robert Weston*

In honor of PHIL WONG • *Dana Tom & Nancy Kawakita*

PRODUCER CIRCLES

Donors at this level enjoy recognition around a production of their choice, are invited to readings and working rehearsals, and receive many other great benefits for their generous gifts. Donations are listed for the year ended February 5, 2026. Every attempt is made to keep these lists as accurate and correct as possible. Please contact the development department by calling 415.866.8907 or sending email to development@sfplayhouse.org if we have made an error, if you have any questions, or you would like to make a gift.

SEASON PRODUCER • \$75K+

Barbara & Gerson
Bakar Foundation
Linda Brewer
Bruce Colman
Jody Corey-Bloom
Grants for the Arts
Mr. Robert Hulteng
William McAllister
Sharon & Samuel Muir
The Estate of Misty Tyree

EXECUTIVE PRODUCER • \$25K+

William & Marsha Adler
Paul Asente & Ron Jenks
Robert H. Beadle
Christopher & Liv Cann
Jonathan Chang
Clay Foundation - West
Margot Golding &
Michael Powers
William J. Gregory
Elizabeth Groenewegen
Hart Family Foundation
Betty Hoener
Nick & Sandy Javaras
Lawrence Kern & Wai Wong
Helen E. Land
Michael Levy & Michael Golden
Bill & Ursula Moffett
Craig Moody
Betty & Clifford Nakamoto
Jan & Howard Oringer
Susannah Raub
Barbara & Saul Rockman
Phyllis & Jerry Rosenberg
Diarmuid Russell &
Heather Podruchny
The Shubert Foundation
Jenn & David Stringer
Elizabeth Werter & Henry Trevor
Ronald Whittier
Family Foundation
Galen Workman & Geoffrey Kulik

PRODUCER • \$10K+

Karin Albright
Alisa Baker
The Barth Foundation -
Aneila & Eugene Barth
Cynthia & David Bogolub
Shelby Bonilla
Steven & Karin Chase
Vicki & David Fleishhacker

Kevin Gahagan
Miriam Gauss
Karla Jones
Leslie Karren
Duff, Carol & Mikayla Kurland
The Stanley S.
Langendorf Foundation
Susan Ledford
Nancy Lenvin
Jennifer S. Lindsay
Karen Loane & Gabe Rosen
David Madfes & Judy Leash
Alan Mattacola
Jackie & Richard Mayer
Bonnie McGregor &
Rich Chambers
Louis Parnell & Jeff Wincek
Jeffrey Pfeffer & Hildy Shandell
Tim & Lyn Potter
Harry & Kay Rabin
Anne Roher
Dana & Gary Shapiro
Margaret Sheehan
The Estate of Kevin Shoemaker
Charlotte Mailliard Shultz
Fund for the Arts
Nancy Thompson & Andy Kerr
Gary Tom & Leo Joslin
Ululani Foundation
Arne & Gail Wagner
Karissa Wong
The Wu Fund

ASSOCIATE PRODUCER • \$5K+

Anonymous (1)
Myles & Ida Abbott
Wayne Bryan & Dick Bufania
Karen & David Crommie
Sue Cuthbert
Dead Petunia, Dead Flora &
Dead Pancake
Helene & Larry Edelman
Ruth Finkelstein
Richard Gill & Emma Stewart
Keith Goldstein &
Donna Warrington
Greg Gorel
Will Green
Richard & Terry Horrigan
Billie & Thomas Horst
Robert & Riki Intner
Herman & Gloria Jew
Guy Joslin
Muriel Kaplan & Bob Sturm

Nancy Larson
David Lichtenstein &
Jennifer Moore
Tom & Stephanie Lima
Sharon L. Litsky &
John Sampson
Ann Ludwig & Joe Short
David May &
Susan Carluen May
Marcy Taylor Pattinson
Nicole & Amir Dan Rubin
Jeanne M. Ryan
James Sokol & Damien Keller
Paul Spiegel & Anne Popkin
John Steinfirst
Carol Sundell
Sam Test
Jim & Gayle Tunnel
Mary Wais
Robert Weston

PATRON OF THE ARTS • \$2K+

Anonymous (1)
Cynn timer Anderson &
Jerry Rampelberg
David Anderson & Nancy Kaible
Claire Axelrad & Mark Pahlavan
Duncan & Lisa Barr
Buz & Anne Battle
Ronald & Susan Berman
Audrey Bojack
Robert Bransten
Daryl Browne
Michele Burton
Vickie Cheng
Jim & Laurel Colopy
Camden Davis &
Greg McKnight
Judith & Harold Dittmer
Paul Feasby
Mary Field
Krystyna Finlayson
Gail Gabiati & Tom Borden
Gale Gottlieb
Douglas Grigg
Jeannene Hansen
James Helman &
Josephine Bellacomo
Lyn Isbell
Linda Jaeger & Charles Browne
Tracy Jaquier
Carolyn Jayne
Brian & Joanie Johnson
Carl Jukkola & Desmond Lee

PATRON OF THE ARTS
CONTINUED

John A. Kelley
Kim Marie Kinkella
Jonathan Klein & Susan Cohn
Susan Kolb
Stephen Laruccia &
Barbara Stone Laruccia
Rebecca & Dave Lebuhn
Dexter & Kathie Lowry
George Lucas &
Tom Rothgiesser
Thom Matson & Hank Stuart
Kathleen McNulty
John & Sunne McPeak
Denise Michael & David Schirle
Diane Compagno Miller
Ron Morrison
Kurt Nelson
Michael & Mary Osborn
Thomas Owen
Gerry & Joan Piaget
George & Carol Possin
Michael Rippey &
Gretchen Bartzen
The Roberts-Hansen
Gratitude Fund
Joan Rost
Bill & Julie Ryan
Ursula Schorn &
Richard Andersen
Carola Sullam Shepard
Tanya Slesnick & Ted Mitchell
Barbara Sommer
Kate & Richard Stacy
Susie & Britt Stitt
Michele & Richard Stratton
Howard & LaVergne Thomas
William Van Dyk & Margi Sullivan
Richard L. Wellins
Arne & Ruth Werchick
Karen & Steve Wiel
Joan C. Zinner

INNER CIRCLE • \$1,500+

Anonymous (3)
Nancy K Austin & Bill Cawley
Ittai Bareket & Kelly Knowles
Marietta & Steve Bartoletti
Bryon Bass & Paul Hogarth
Kate Beckwith
Marcus & Sara Byruck
Frances Campra
The Libi & Ronald Cape
Philanthropic Fund
Richard & Tracey Cassard
Mark Cohen & Jackie Pelavin
Mike Crosby & Dr. Marsha Brown
Edward Cullen
Vivek Datta &
Jonahatan Rabago
Elliot Evers
Rodney Farrow
Joanne Ferris

Ron Fisher
Mike & Lea Ann Fleming
Janie & Donny Friend
Kay Sprinkel Grace
Gail Hamilton
Julia & Gordon Held
Christine Linh-Chau Hoang &
Paul Nakada
Julie & John Hughes
Daniel & Debra Hunter
Bob & Margaret Ippolito
Dennis James & Michael Pereira
Barbara Keck
David Kelly & Jay Hoffman
Kenneth C. Larson &
Linda Adams
Peter & Diane Lawrence
Hoyle & Vincenta Leigh
Michael Mathis &
Ana DeAlmeida
Craig & Lorraine Mautner
Karin & Gregory McClune
Patty McCrary & Dale Fehring
MCLM Charitable Fund
Kathleen McManus
Daniele Midi & Mark Terrelonge
Gail & David Offen-Brown
Nancy Ozsogomonyan
Steven Peterson & Peter Jaret
Linda Pinkoski
Kristin Ramsdell
Margot & Mark Rawlins
Tiiu Eva Rebane
Dan Rolleri
Linda Romley-Irvine &
Perry Irvine
Marcia Ruben
Larry Russo
Marilyn Rutz & David Levy
Carrie Schucker
Pamela Sebastian
Barbara Seifer
David Shepherd
Arlene & Matthew Sirott
Jay Streets
Babak Taheri
Christian Chadd Taylor
Maggie Thompson
Alyosha & Moya Verzhbinsky
Barbara L. Waldman
JoBeth Walt & Ira Fateman
Zack Wasserman
Beth Weissman
Catherine & Richard West
Emily Papert Williams
Sue & Richard Wollack
Art & Janet Wong
Barbara Wong & Lawson Ball
Ria Wright

BENEFACTOR • \$500+

Anonymous (1)
Suzi Alexander
Wendy Allphin
Randall Askin

David Barker & Margaret Mason
Glenn & Sandra Bauer
Roy Bergstrom
Ann Bornstein
Donna Brorby
Nina Buthee
Ronnie Caplane
The Leo J. & Celia Carlin Fund
Elaine Carlino
Robert Carlton
Victoria Chen
Rajeev Chopra
Lily L. Chow
Len Christensen
Diane & Steve Ciesinski
Suzanne Cross & John Simpson
Bruce Degen
Sharon & Mike Demere
Mark Devenenzi
Geraldine Donato
Sandy & Dick Drew
Andy & Jennifer Enzminger
Suzanne & Allan Epstein
Lisa Erdos & Wayne DeJong
Mark Evanoff
Doug Faunt
Huldhah Louise Ferdun
Danny Field & Gary R. Robinson
Lynn Fonfa & Margie Cohen
Lydia Fredkin
Diana Gay-Catania &
David Catania
Stephen Geisheker
Peter Geyer
Steven Goldberg &
Sandee Blechman
Ron Goodman &
Richard Leadbetter
Dan Granoff & Marjory Kaplan
Gina & Steve Harris
Caroline Hillhouse
Dr. Russell & Morgan
Cosby Howson
Christopher Jantzen &
Denise Demoss
John & Catharine Kalin
Barbara Kautz
Sandra Keith & Bob Shephard
Richard Keller
Veronica & Rodney Kiefer
Richard & Linda Koch
Dan Clarke & Maureen Laney
Amy Lawson & Scott Fittje
Karen & Keith Lee
Judy Levin & Barry Epstein
Cordelia Link
Eugenia Loken
Barbara Loomis &
Stephen Elspas
Paulette Lueke &
Robert McCully
Gail MacGowan
Dennis & Karen May
Maria M. Meyer
Jacqueline Minor

Linda Montgomery & Roy Hahn
 Miriam & Michael Morgan
 Kenneth Noyes & Alan Pardini
 Lester Olmstead-Rose
 Lynne Painter
 P. David Pearson &
 Barbara Schonborn
 Susan Petit
 Maribeth Portz
 Jack & Jessica Powell
 Michael Raddie & Gayle Tunnell
 Susan D. Ralston
 Andrew Rand
 Philip & Carla Reed
 The Eddie Reynolds &
 Hernán Correa Family Fund
 Judith & Charles Rino
 Jeff Rodman & Adrienne Hirt
 Stanley R. Ross
 Megan Rothney
 James Seff & Margene Fudenna
 Richard & Diana Shore
 Neal Shorstein &
 Christopher Doane
 Andrea Shuel
 Charles & Sally Sieloff
 Susan & Joel Sklar
 Montgomery Slatkin
 Mike Smith
 Stephen Smith
 Jonathan & Allison Stanton
 Karen Sullivan & Ken Mitchell
 Jeffrey Trescott
 Christine Valentine
 Marcia & David Vastine
 Miodrag Vujkovic
 James Warren
 Morey & Jonnie Weingarten
 Gregory Wrenn & Robert Pyburn
 Frank Yellin & Mark Showalter
 Michael Zarrella & Linda Ruggeri

FRIEND • \$250+

Anonymous (2)
 Jane Aguirre
 Maria Alger
 Elizabeth & George Anders
 Toni Bassett
 Joanna Berg & Dan Finkelstein
 Elizabeth Borst
 Helen Bozoky
 Verne Brandt
 Michael & Vivian Brown
 David Chase
 Sharon & Dennis Clisham
 Christine & Richard Colton
 Keith & Ellen Cottingham
 Bruce Cozadd
 Vivian & Douglas Crisman
 Elizabeth Derenzy
 Kathleen Derrig
 Thomas Edwards &
 Rebecca Parlette-Edwards
 Ivy Efendioglu
 John & Linda Elman

Carol Emory
 Andrew & Michele Epstein
 Scott Ferguson & Kate Hanson
 Michael & Edna Fields
 Lynda Fu
 Mike & Judy Gallagher
 John & Mary Gill
 Beth Goldstein
 Gregg & Ruth Gorrin
 Anita Grandpre
 Karen Greig
 Therese Grenchik
 Dr. Kristen Harvey
 Marianne Hesse
 Ian Hinchliffe & Marjorie Shapiro
 Betty Ho
 Vanessa Homewood
 Mark & Loraine Horne
 Elisabeth Houseman
 Bill & Jadranka Hyatt
 Nancy Igdaloff
 Elizabeth Ingalls
 Dov & Madelyn Isaacs
 John Johnson
 Martin Johnson &
 Jenny Wodinsky
 Marjorie A. Kirk
 Monica Kochanny
 Betty Miller Kolotkin
 Douglas & Barbara Konecky
 Terri Kwiatek
 Carol Lashman
 Calvin Lau & Charles Bush
 Forrest Laureano
 Patricia Lee
 Roger A. & Melinda K. Levy
 Charitable Fund
 Bruce MacDermott
 Betty Maddux
 Bill & Cathy Madison
 Maria Mana
 Alan Markle
 Andrea McDonald
 Leslie Murdock & Kathleen Hall
 Russell Nelson
 Jan Pardoe & Cathy McIntosh
 Sylvia Pascal
 Rebecca Pauling
 Teri Ann & Robert Peri
 Rosemary Pfeiffer
 Jeremy Platt & Sondra Murphy
 Chuck Purvis
 Rose Mary Reed
 Janice Richards
 Jon & Carol Richards
 Carol Savary
 Janine Scancarelli
 Steven & Barbara Segal
 Bill & Holly Shepard
 Dara & Brian Silverstein
 Joan Simmons
 Stephen Skedzielewski &
 Connie Howe
 Pam Smith
 Vera & Harold S. Stein, Jr.

Gretchen & Grover Stone
 Diana Taylor
 Dana Tom & Nancy Kawakita
 Alyson Tufts
 Katharine & David Velleman
 Linda Vida
 Pier Voulkos
 Kusum Wagle
 Robert Weiner
 David Wofsy
 Ingu Yun

ADVOCATE • \$100+

Anonymous (8)
 Ronelle Alexander
 Paul Anderson
 Betsey Archer
 Stuart & Myrna Aronoff
 Paula Astalís
 Werner Bachmann
 David Baldwin
 Kirk Baldwin
 Cristina Banks
 Eve Barringer
 Alec Bash
 Sally Beck
 Brenda Beckett
 Richard Behrendt
 Suzanne Beim
 Linda Belden & Donald Ohlen
 Randie Bencanann &
 Bobby Baron
 Chuck & Marby Bennett
 Nancy Berke
 Gary & Elise Berticevich
 Peter & Nancy Bickel
 Ann Binning
 James Blume
 William Bombria
 Arlene Borick
 Ruth Botchan
 Jim & Arielle Bourgart
 Barbara Boyington
 David & Molly Prager Boyll
 Elizabeth Brady
 Julian & Beth Brandes
 Warren & Judith Branzburg
 Neil Bray
 Nancy & Patrick Broderick
 Jeffrey Brown
 Robert & Carin Bryans
 Jennifer Burden
 Lori Cabansag
 Ian, Ryan & Russ Campbell
 Nancy Catena
 Linda Chafetz
 Urmi Chakrabarti
 Cathy Cheung
 Monica Choi
 Paula Clark
 Angela Cohen
 Eric Collier
 Darryl & Carolyn Compton
 Margaret Cooke
 Kathleen Curran

ADVOCATE
CONTINUED

Sheila Dalton
Paul Dana
M.K. & Katherine Davis
Janet Dawson
Ken Dejornette
Peggy DeMouthe
Anne Dillon
Jerome Dodson
Rod-Voltaire Edora
Chris Erickson & Yvonne Burgess
James Feit
Lee M. Flynn
Gary & Paula Fracchia
Ellen Frankel
Charles Gary
Kathleen Gee
Barbara Gersh
David Gibson
James & Kathy Gibson
Nadine Ginzberg
Janet Gless
Ronald Goodman
Shelley Gottlieb
James Hall
Nancy Hall &
Mark Theodoropoulos
Barbara Hamlin
Maria Hilakos Hanke
Gary Harris
Sharon Hasegawa
Brian & Tracy Houghton
Stephen Hayashi
Carol Hazenfield
Zhen He
Carol Henri
Brian & Jocelyn Herndon
Alison Heyman
Alison Hightower
Nancy Howe
Joan Huff
Leslie Hull
Gary Jaffe
Robin & Ginny Jaquith
Anthony Jasinski
Rosemary Jenckes
Mark Jones
Robert & Kathleen Kaiser
Elnora Ke
Christine Khoury
Nelda Kilguss
Caroline Kindrish
Joe & Peggy Koman
Zahava & Israel Koren
Christine Kradjian
Richard & Ann Lanzerotti
Judi Lehman
Jacopo & Robyn Lenzi
Steve & Judy Lipson

Barbara Loften
Ysa Loo
Antonia Lozon
Carol Ludwig
Budd MacKenzie
Dolores MacKinnon
Mark Maigatter & Heidi Hofer
Joanne Mandel
Robert Mascola &
Jennifer Kopec
Jill Matichak
Madeline McBirney
Brad & Jennifer McCullough
Carolyn McGee
Ricki & Doug McGlashan
Michael McKeon
Jacque McLaughlin
Jacqueline McMahan
Ash McNeely
David Mellor
Carl & Judy Mendoza
Michal Merin
Henry Milich
Lori Milken
Toni Miller
Irene Minabe & Hector Esparza
Debbie Miskell
Paul Moderacki
Leslie Morelli
Amelia Motroni
Melissa Nittler
Prudence Noon
Alan Oakley
Steven Ortega
Judith Ostapik
Vicki Oswald
James O'Toole
Evan Painter & Wendy Polivka
Margarita Palmada
Samuel Palmer
Kiran Pandit
Mark Pearce
Melissa Perez
Ellen Pichey
Bob Pinder
Dan & Dee Dee Pisano
Mary Pless
Michael Poplaro
Kathleen Quenneville
David Rachleff
Corey Raffel
Harriet Rafter
Mort & Marie Raphael
Jim Rauh & Kelly Grant
Enid Rayner
Augusto Recinos
Gail Reed
Dave & Carmelle Reiser
Jorge Reyes
Charles Rice
Ariana Rickard

Stephanie Rogers
Fred Rosenblum
Diane Ross
Lois & Arthur Roth
Rebecca Rothman
Michael Roy
John Ruskin
Deborah Russo
Shantina Sampson
Michael & Maureen Samson
Laurel Schaefer-Trent
Roger & Lisa Schrag
Dennis Setlock
Fred Setterberg
Douglas & Carole Sheft
Marilyn Shipp
Jeremy & Carolyn Siegel
Christine Silver
Bickley Simpson
Gerald Smilovitz
Alan Jay Smith
Fern Smith
Jay C. Smith
Jeanne Smith
Dr. & Mrs. Samuel Sobol
Billie Soward
Barbara Sprung
Judith Stacey
Lauri Steel
Annie Stenzel
Gilda Sullivan
Joan Sullivan
Robert Sullwold
Marcy Swain
Sally Taylor
Gretchen Trabant
Cathleen Trachok
Heidi Triay
Alex Trimble
Carol Tufts
Jim Turner
Leslie Tyler
John & Phyllis Van Hagen
Suzanne Varacalli
Boris Veytsman
Gretchen Vonderueing
Adrian Walker
Meredith Watts
Jack Weinbaum
Susan Whitman
John Wildermuth
Carl Williams
Edward Winslow
Viviana Wolinsky
Courtney Wong
Janet Wong
William Woods
Akiyo Yokoi
Shanna Yonenaka
Alan Zemsky

PLAYHOUSE LEGACY CIRCLE

We gratefully acknowledge the following patrons for making a legacy commitment to San Francisco Playhouse. Please remember us in your will and trusts.

GIFTS GRATEFULLY RECEIVED FROM THE ESTATES OF:

Nancy Blair
Gretchen Saeger
Kevin Shoemaker
Misty Tyree
Patty Wilkerson
John A. Williams
Gerhard Woelke
Delphine Zeuli

GIFTS DESIGNATED:

Anonymous (1)
William & Marsha Adler
Paul Asente & Ron Jenks
Susan Atherton
Nancy Axelrod
Robert H. Beadle
Linda Brewer
Agnes Chen Brown
Sharon & Dennis Clisham
Sheri Davenport
Greg Gorel
William J. Gregory
Jeannene Hansen
Fred Hartwick
George Heymont
Mr. Robert Hulteng
Robert & Riki Intner
Geoff Jue & Magda Perez

John & Catharine Kalin
Fred Karren
Helen E. Land
Judy Leash
Susan Ledford
Sharon L. Litsky
Andrew Maguire & Doug Cyr
Rebecca Martinez
Jackie & Richard Mayer
John Ontiveros &
Mark Herrmann
The Eddie Reynolds &
Hernán Correa Family Fund
Dana & Gary Shapiro
John Steinfist
Nancy Sturm & Robert Love
Nancy Thompson & Andy Kerr
Linda Vallee
Michael B. Wisper



image by donny gilliland

JOIN THE PLAYHOUSE LEGACY CIRCLE TODAY!

Share your passion for intimate theatre with generations to come.

Planned giving allows you to designate a portion of your estate to provide long-term stability to our mission and serve future generations.

It may also provide you with substantial tax advantages and even income during your lifetime.

Please call 415.866.8907 or email development@sfplayhouse.org for more information.

STILL TO COME
IN OUR 2025/26 SEASON

DRACULA

A Feminist Revenge Fantasy, Really

DRACULA A FEMINIST REVENGE
FANTASY, REALLY

BASED ON THE NOVEL BY BRAM STOKER
BY KATE HAMILL

"MS. HAMILL HAS GIVEN US A TREMENDOUSLY
ENTERTAINING 'DRACULA' THAT HAS 'GREAT BIG HIT'
STAMPED ALL OVER IT." - WALL STREET JOURNAL



MAY 14 — JUNE 27, 2026

hairspray

• THE BROADWAY MUSICAL •

HAIRSPRAY

BOOK BY MARK O'DONNELL & THOMAS
MEEHAN • MUSIC BY MARC SHAIMAN • LYRICS
BY SCOTT WITTMAN & MARC SHAIMAN

"EXHILARATINGLY FUNNY" - THE NEW YORKER

WINNER OF 8 TONY AWARDS • BEST MUSICAL



JULY 10 — SEP 12, 2026



WHAT'S NEXT?

OUR 2026/2027 SEASON WILL BE
REVEALED ON **APRIL 12, 2026.**

SFPLAYHOUSE.ORG